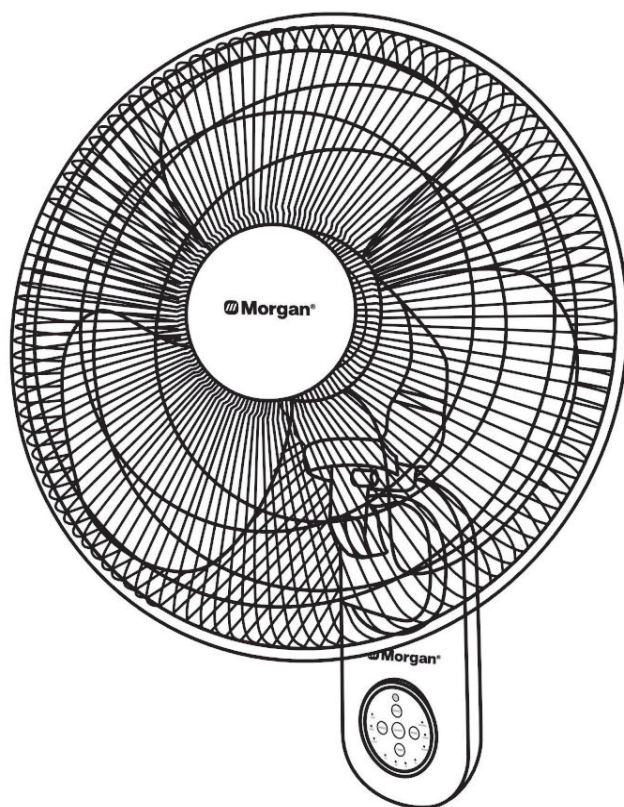


Morgan®

USER MANUAL



16" Wall Fan

MWF-NC169RC

145x210mm 105克铜版纸，单黑印刷

C O N T E N T S

1 Parts Identification

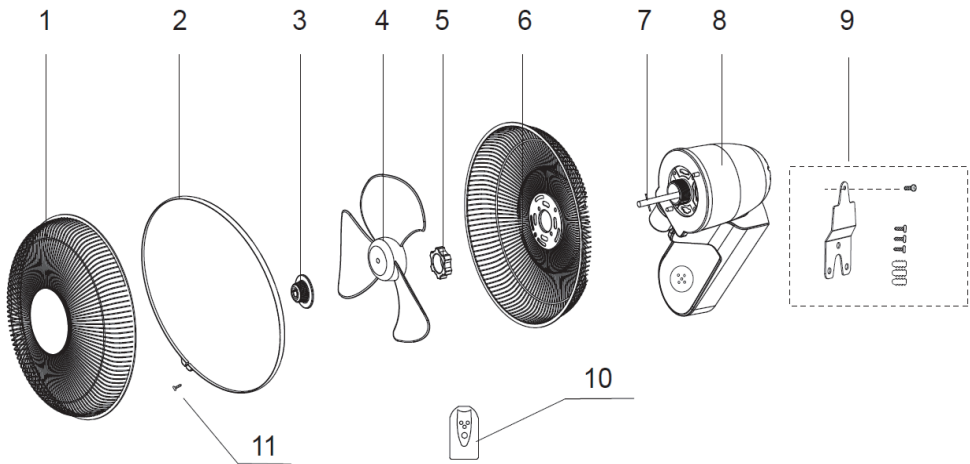
1 Specifications

2 Safety Precautions

3 - 5 Operating Instructions

5 Care and Cleaning

PARTS IDENTIFICATION



1.	Front Grill	7.	Motor Shaft
2.	Grille Ring	8.	Motor Head
3.	Fan Blade Cap	9.	Wall Mounting Kit
4.	Fan Blade	10.	Remote Controller
5.	Rear Grill Nut	11.	Safety Screw
6.	Rear Grill		

SPECIFICATIONS

RATED VOLTAGE	220-240V~
RATED POWER	50W
FREQUENCY	50/60Hz
SIZE	16" (400MM)

SAFETY PRECAUTIONS

When using the appliance, especially when children are present, basic safety precautions should always be followed including the following:

1. Read all instructions carefully before using the appliance.
2. Check that the voltage range given on the appliance-rating label corresponds with that of your main power supply's voltage.
3. This appliance is suitable for normal household use only and not for commercial use.
4. Use the appliance only on a level working surface.
5. Do not hold the appliance on the slant while it is working.
6. Do not operate the appliance with a damaged cord or plug or after the appliance malfunctions or has been dropped or damaged. Return the appliance for examination, adjustments, or repair.
7. The use of attachments not recommended may cause fire, electrical shock, or risk of injury.
8. Unplug the unit when not in use and whenever you clean or move the unit.
9. To disconnect the appliance, set control to OFF, grip plug and pull from wall outlet. Never yank on cord.
10. This appliance is not intended for use by persons (including children) with reduced physical, sensory or mental capabilities, or lack of experience and knowledge, unless they have been given supervision or instruction concerning use of the appliances by a person responsible for their safety.
11. Only authorized service personnel should undertake repairs on electrical appliances. Faulty, unqualified repair work may cause accidents or injury to the user.
12. If the supply cord is damaged, have it replaced by the manufacturer or its service agent or a similarly qualified person in order to avoid a hazard.

OPERATING INSTRUCTIONS

BEFORE USING YOUR WALL FAN

- Unpack the fan from the carton box.
- Check your local main voltage whether it is the same as stated on the appliance.
- Before using for the first time, remove any protective films or stickers from the appliance.
- Ensure the power switch is at “OFF” position.

HOW TO ASSEMBLY WALL FAN

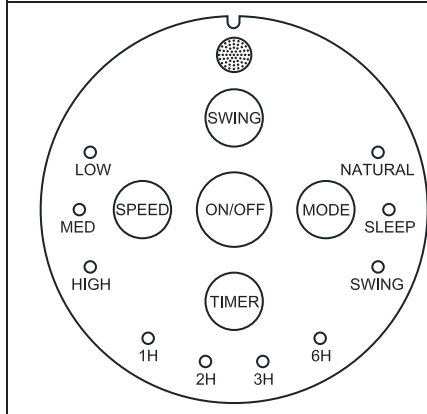
1. Remove the rear grill lock nut from the motor shaft spindle.
2. Fit the rear grill by positioning it on the location pins. Secure the grill to the motor body with the grill lock nut.
3. Push the fan blade onto the motor shaft until the fan blade is appropriately fitted. For models with shaft pins, push the fan blade onto the motor shaft by matching the slots on the base of the blade with the shaft pin.
4. Secure the blade with the blade nut by turning it COUNTER - CLOCKWISE. Check that the fan blade rotates freely by turning it with your hand.
5. Place the safety grille into position and secure it by fastening the net ring over the outer rim. The screw and nut at the bottom of the grille must be fixed.
6. Select an appropriate location and fix the mounting bracket onto a strong wall (or locate a stud behind plaster boards) with three wall plugs and screws supplied (in the wall mounting kit)
7. Mount the wall fan on the mounting hook and tighten the mounting safety screw.
8. If the power cord is hanging loosely between the fan and the power outlet, make sure it will not touch or obstruct fan blade rotation or fan oscillation in any way.

OPERATION OF THE PRODUCT

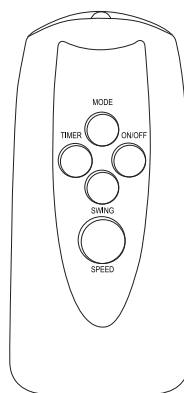
- Connect the plug into an electrical socket and switch on at the wall.
- You can control your wall fan either with the Remote Controller or with Control Buttons on the control panel.

OPERATING INSTRUCTIONS

DISPLAY & CONTROL PANEL



REMOTE CONTROL



TIMER:

When the unit is in use, you can set the Timer to turn off the fan after the specified time. Press this button repeatedly to increase the Timer setting in 1 hour increments (up to a maximum of 12 hours) as indicated on the indicator Display. After 3 seconds, the Timer starts. Once the Timer has run out, the unit will turn off.

ON/OFF:

- Switch on the mains power supply. All the indicated light illuminated and turns off in 1 second.
- Then press the ON/OFF button to start the fan at MED Speed, in Normal Mode.
- Press again to turn off the fan.

MODE:

Press to select Normal Mode, Natural Breeze Mode or Sleep Mode (as indicated on the Display).

NATURAL MODE:

Fan speed varies automatically to simulate a breeze, and NATURAL indicator turns on.

SLEEP MODE:

Fan speed varies automatically for use during sleep, and SLEEP indicator turns on.

OPERATING INSTRUCTIONS

NORMAL MODE:

Fan operates at the speed selected with "SPEED" button, and NO indicators lights on NATURAL or SLEEP.

SPEED:

Press this button to switch the fan speed from LOW-MED-HIGH.

SWING:

Press to switch Oscillation on/off.

Remote Control

- The sensor of the remote control must be pointed at the fan receiver to operate properly.
- The distance between the remote and receiver should be no more than 6 meters and 30 degrees radius left to right of the fan.

CARE AND CLEANING

- Always unplug the appliance first before cleaning!
- Never immerse the main body in water or other liquids, clean it with a damp cloth.
- Wipe the surfaces of the fan and base with a soft damp cloth.
- Never use any corrosive cleaning solution.
- Do not allow the motor or other electrical components to be exposed to water.
- For proper storage, always place the appliance in a low humidity environment.

 **Morgan**[®]



E-mail: electrical.appliance@dksh.com
www.morgan.my

 facebook.com/morganappliances