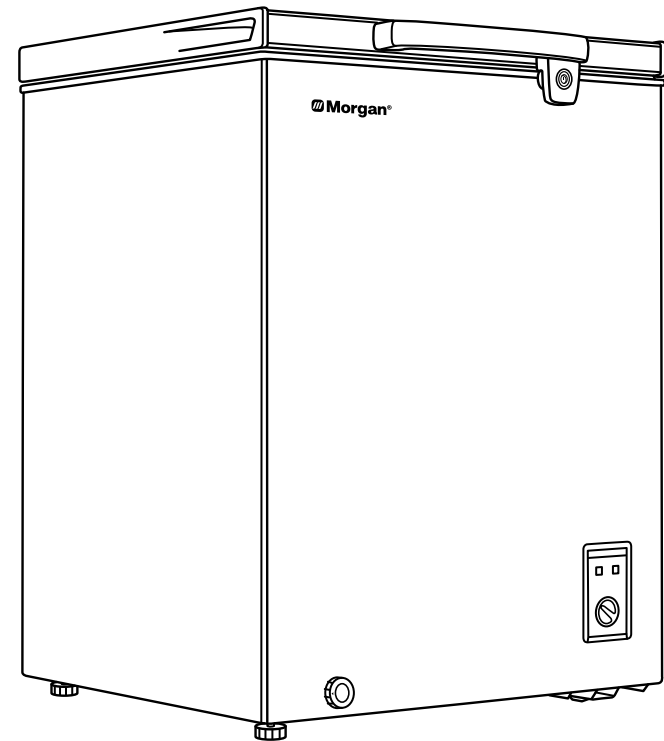


Morgan®

USER MANUAL

Morgan®




Chest Freezer

MCF-EVEREST 215
MCF-EVEREST 220



E-mail: electrical.appliance@dksh.com
www.morgan.my

 facebook.com/morganappliances

Thank you for purchasing a quality MORGAN appliance.

We trust that you will have a pleasant experience with your new product. To guarantee safety and best efficiency, please read this manual carefully and keep a copy for future reference.

IMPORTANT SAFEGUARDS



WARNING! It is hazardous for anyone other than authorized service personnel to carry out servicing or repairs which involves the removal of covers. To avoid the risk of an electric shock do not attempt to repair this appliance yourself.



WARNING! Risk of fire / flammable materials.

When using electric appliances, basic safety precautions should always be adhered to, including the following:

- Read all instructions carefully and retain them for future reference.
- Containers with flammable gases or liquids can leak at low temperatures.
- Do not store any containers with flammable materials, such as spray cans, fire extinguisher refill cartridges etc., in the appliance.
- Do not place carbonated or fizzy drinks in the Freezer compartment. Ice lollies can cause “Frost/Freeze burns” if consumed directly from the Freezer.
- Do not remove items from the Freezer compartment with damp/wet hands, as this could cause skin abrasions or “Frost/Freezer burns”. Bottles and cans must not be placed in the Freezer compartment as they can burst when the contents freeze.
- Manufacturer’s recommended storage times should be adhered to. Refer to relevant instructions.
- Do not allow children to tamper with the controls or play with the Freezer.
- The Freezer is heavy. Care should be taken when moving it. It is dangerous to alter the specification or attempt to modify this product in any way.
- Do not store inflammable gases or liquids inside your Freezer.
- If the power cable is damaged, it must be replaced by the manufacturer, its service agent, or similarly qualified persons to avoid a hazard.
- This appliance is not intended for use by persons (including children) with reduced physical, sensory, or mental capabilities, or lack of experience and knowledge, unless they have been given supervision or instruction concerning use of the appliance by a person responsible for their safety.
- This refrigerating appliance is not intended to be used as a built-in appliance.
- This appliance is intended to be used in household and similar applications such as
 - staff kitchen areas in shops, offices, and other working environments
 - farmhouses and by clients in hotels, motels, and other residential type environments
 - bed and breakfast type environments
 - catering and similar non-retail applications

IMPORTANT SAFEGUARDS

- Do not store explosive substances such as aerosol cans with a flammable propellant in this appliance.
- Children should be supervised to ensure that they do not play with the appliance.

WARNING

- Keep ventilation openings, in the appliance enclosure or in the built-in structure, clear of obstruction.
- Do not use mechanical devices or other means to accelerate the defrosting process, other than those recommended by the manufacturer.
- Do not damage the refrigerant circuit.
- Do not use electrical appliances inside the food storage compartments of the appliance, unless recommended by the manufacturer.
- Refrigerating appliances – in particular a refrigerator-freezer Type I – might not operate consistently (possibility of defrosting of contents or temperature becoming too warm in the frozen food compartment) when sited for an extended period of time below the cold end of the range of temperatures for which the refrigerating appliance is designed.
- For doors or lids fitted with locks and keys - keep keys away from children’s reach to prevent children from being locked inside.
- The refrigerant used in your appliance and insulation materials requires special disposal procedures.
- When positioning the appliance, ensure the power cord is not trapped or damaged.
- Do not place multiple portable socket-outlets or portable power supplies at the rear of the appliance.
- The following instructions will avoid the risk of food contamination:
 - Do not open the door for long periods to avoid a significant increase of the temperature in the compartments of the appliance.
 - Clean surfaces that can come in contact with food and accessible drainage systems regularly.
 - Clean water tanks if they have not been used for 48 hours; flush the water system connected to a water supply if water has not been drawn for 5 days.
 - Store raw meat and fish in containers in the refrigerator to avoid contact or onto other foods.
 - Two-star frozen-food compartments are suitable for storing pre-frozen food, storing or making ice-cream and making ice cubes.
 - One-, two- and three-star compartments are not suitable for the freezing of fresh foods.
 - If the refrigerating appliance is left empty for long periods, switch off, defrost, clean, dry, and leave the door open to prevent mould developing within the appliance.

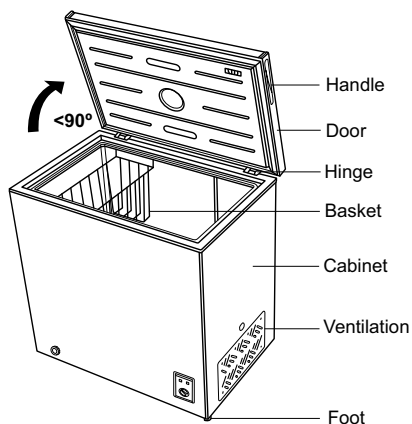
PARTS IDENTIFICATION

- Due to technological innovation, the product descriptions in this manual may not be completely consistent with your freezer. Details are in accordance with the real product.

WARNING: Never touch the interior of the Freezer Chamber or frozen foods in the compartment with wet hands as this could result in frost bite.

CLIMATE RANGE

- The appliance's climate range information is provided on the rating plate, indicating the ambient or working room temperature for the optimal operation of the appliance.



Climate Range	Permissible ambient temperature
SN	From +10°C to +32°C
N	From +16°C to +32°C
ST	From +16°C to +38°C
T	From +16°C to +43°C

Note: Given the limit values of the ambient temperature range for the climate classes for which the refrigerating appliance is designed and the fact that the internal temperatures could be affected by such factors as location of the refrigerating appliance, ambient temperature and the frequency of door opening, the setting of any temperature control device might have to be varied to allow for these factors, if appropriate.

If the power cable is damaged, it must be replaced by the manufacturer, its service agent or similarly qualified persons in order to avoid a hazard.



Note: The appliance may not be able to maintain the desirable compartment temperatures when operating in an environment other than the specified climate type (i.e., beyond the rated ambient temperature range).

LOCKS

For doors or lids fitted with locks and keys - keep keys away from children's reach to prevent children from being locked inside. Destroy old locks or latches as a safeguard when disposing an old refrigerator.

Freon-free

The freon-free refrigerant (R600a) and the foaming insulation material (cyclopentane) that is environmentally friendly are used for the refrigerator does not cause damage to the ozone layer and has minimal small impact on global warming. R600a is flammable, and sealed in a refrigeration system, without leakage during normal use. In the event of refrigerant leakage due to damaged refrigerant circuit - keep the appliance away from open flames and open the windows for ventilation immediately.

TRANSPORTATION INSTRUCTIONS

- The appliance should be transported only in a vertical upright position. The packing as supplied must be intact during transportation.
- If the appliance has been placed horizontally during the course of transport, it must only be laid on its left hand side (when facing the door front) and it must not be operated for at least 4 hours to allow the system to settle after the appliance is brought back to upright position.

1. Failure to comply with the above instructions could damage the appliance. The manufacturer will not be held responsible if these instructions are disregarded.
2. The appliance must be protected against rain, moisture, and other atmospheric influences.

IMPORTANT: Exercise caution during cleaning/transporting the appliance to avoid contact with the condenser metal wires at the back of the appliance and prevent injury to hands or damaging the appliance.

IMPORTANT: This appliance is not designed to be stacked with any other appliance(s). Do not attempt to sit or stand on top of your appliance to prevent injuring yourself or damaging the appliance.

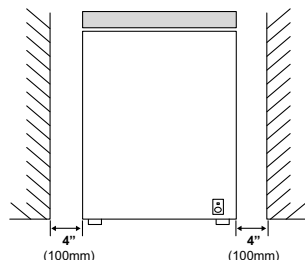
IMPORTANT: Ensure that power supply cable is not twisted under the appliance during and after carrying/transporting the appliance, to avoid the mains cable becoming cut or damaged."

- When positioning your appliance, ensure you do not damage your flooring, pipes, wall coverings etc. Do not move the appliance by pulling by the lid or handle. Do not allow children to play with the appliance or tamper with the controls. Our company declines to accept any liability should the instructions not be followed.

INSTALLATION INSTRUCTIONS

1. If possible, avoid placing the appliance near cookers, radiators or in direct sunlight as this will cause the compressor to run for long periods. If installed next to a source of heat or refrigerator, maintain the following minimum side clearances:

- From Cookers (100 mm)
- From Radiators (300 mm)
- From Fridges



2. Ensure sufficient space around the appliance to ensure free air circulation. Ideally, a minimum space of 10cm must be left around the freezer and ensure for gaps (see below diagram).

3. The appliance should be placed on a smooth surface.

4. Do not install the appliance outdoors.

5. Protection from moisture: Do not place the appliance in damp areas to prevent rust from forming on the metal parts. Do not spray water onto the appliance to avoid weakening the insulation which can result in electrical leakage.

6. Refer to "CARE & CLEANING" section to prepare your appliance for use.

7. Condensation may form if the appliance is installed in unheated areas, such as garages etc., This is normal, and condensation can be removed by wiping with a dry cloth.

BEFORE FIRST USE

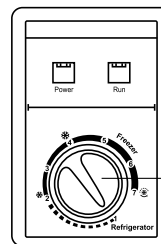
Before operating the appliance for the first time, ensure that:

1. The interior is dry, and air can circulate freely at the rear.
2. Clean the interior as recommended (refer to CARE & CLEANING).
3. Insert the power plug into the power supply and power on. The red light will turn on. Avoid accidental disconnection by taping over the switch. The green light will be lit and the compressor will begin operation.
4. A noise can be heard as the compressor starts up. Liquids and gases sealed within the refrigeration system may also contribute to noise, whether the compressor is running or not. This is normal.
5. If you going to store already frozen food open the freezer lid and ensure that the freezer has reached the correct temperature before storing already frozen food.
6. Do not load the appliance immediately after it is switched on. Wait until the correct storage temperature has been achieved. We recommend that you check the temperature with an accurate thermometer.

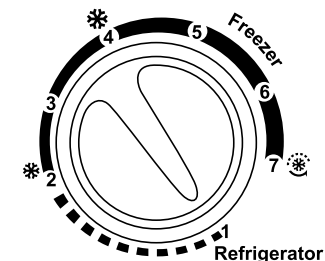
IMPORTANT NOTES:

- If there is a power failure do not open the lid. Frozen food should not be affected if the failure lasts for less than 20 hours. If the failure is longer, inspect the food and consume immediately or cook and refreeze again.
- The lid of the chest freezer may be difficult to open after closing it. This is due to the pressure difference which will equalize and allow the lid to be opened normally after a few minutes.

OPERATING INSTRUCTIONS



Thermostat Adjustment Knob



- The interior freezer temperature is regulated by the thermostat adjustment knob.
- The "1,2,3,4,5,6,7" marks on the knob do not represent the exact temperature. The smaller number represents higher temperature while the bigger numbers represent lower temperatures.

The following figure illustrates information as below:

- "1 (Refrigerator)": Temperature range (5°C)
- "2-4 (Freezer)": Temperature range (-12~-18°C)
- "4-7 (Freezer)": Temperature range (-18~-24°C)
- "7 (Fast freezing)": Temperature range (below -24°C)
- There is a deviation of $\pm 3^{\circ}\text{C}$ for each mode in different operation environment due to the mechanical control mode. Please adjust according to the actual operating conditions.
- Fast freezing (below -24°C): With the knob set to fast freezing, the compressor will operate continuously to ensure food is rapidly cooled.
Caution: Do not select and keep the fast-freezing knob position after fast freezing

REFRIGERATING MODE:

- When selecting other refrigeration modes, remove foods to avoid them being damaged by frost. Select the thermostat knob to refrigeration mode, remove all frozen food from the freezer compartment. Keep empty for one hour before refrigerating again.
- Due to individual factors of the refrigerator, the actual temperature in the box may vary from the set temperature. This is normal and does not affect the appliance's normal operation.

STORING FROZEN FOOD

- Prepackaged commercially frozen food should be stored in accordance with the frozen food manufacturer's instructions for a freezer compartment, such as:
 1. Place food packets into the freezer as quickly as possible after purchase.
 2. Do not exceed the "Use By", "Best Before" dates on the packaging.

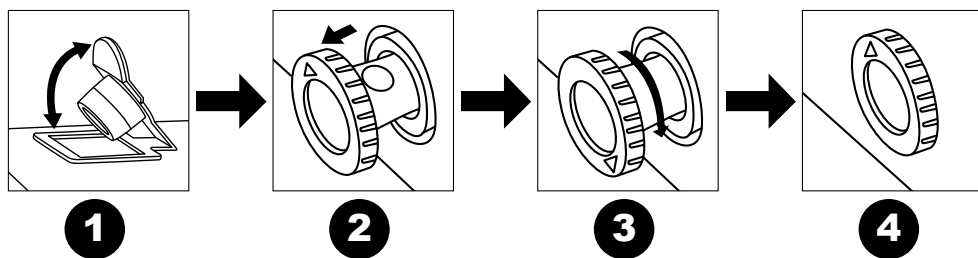
OPERATING INSTRUCTIONS

FREEZING FRESH FOODS

- Place fresh food to be frozen near the side walls to ensure faster freezing and away from already frozen food, if possible.
- Never exceed this maximum capacity. Do not freeze too large a quantity at any one time.
- Food quality is best preserved when it is frozen right through to the center as quickly as possible.
- Take special care not to mix already frozen food and fresh food.

DEFROSTING

- Defrost twice a year or when a frost layer of around 7 mm (1/4") has formed.
- Alternatively, you may switch off the freezer at the power supply and detach the power plug.
- Extract the water conduit and channel water into a container.
- Set the thermostat knob at "7" position 6 hours before defrosting to ensure food is at the lowest temperature when removing it. Wrap all food in several layers of newspaper and store in a cool place (e.g., fridge or larder).
- Remove the freezer basket. Leave the lid open. Containers of warm water may be placed carefully in the freezer to hasten the defrosting process.
- Never use hairdryers, electrical heaters, or other such electrical appliances for defrosting. When defrosting has finished, flow out the defrost water collected at the bottom of the freezer (see below diagram) and dry the interior thoroughly. Switch on the Fast Freeze and leave it on for about three hours.



1. A drain outlet is designed at the bottom of the freezer liner. Remove the rubber cover when defrosting to discharge the defrosted water from the drain hose.
2. Extract the water conduit by 20-25mm until the water hole can be seen.
3. Twist the water conduit until the arrow points downward.
4. After defrosting, ensure there is no more water flowing from the water conduit and twist it to make the arrow point upwards.

OPERATING INSTRUCTIONS

IMPORTANT NOTES

- Do not use pointed or sharp-edged objects such as knives or forks to remove frost.
- Never use hairdryers, electrical heaters, or other such electrical appliances for defrosting.
- It is normal for beads of water or frosts to appear on the freezer collar and door gaskets in the wet weather. This is normal and will not affect the normal operation. Use a dry cloth to wipe clean.

CARE & CLEANING

- We recommend that you switch off the freezer at the power supply and detach the power plug before cleaning.
- Never use sharp abrasive instruments, soap, household cleaners, detergent, and wax polish for cleaning.
- Use only lukewarm water to clean the freezer cabinet and wipe dry.
- Use a damp cloth wrung out in a solution of one teaspoon of bicarbonate of soda to one pint of water to clean the interior and wipe it dry.
- Remove excess ice deposits regularly, using a plastic ice scraper. Large accumulation of ice will impair the freezer's performance.
- Switch the appliance off if it is not going to be used for a long period of time. Remove all food, clean, and leave the lid ajar.
- Inspect lid seals regularly to ensure they are clean and free from food particles.

IMPORTANT NOTES:

- Never use water to wash the compressor. Wipe dry with a clean cloth thoroughly and allow to dry.

DO'S AND DON'TS

DO

- Defrost food from the freezer thoroughly in a fridge or microwave oven by following defrosting and cooking instructions.
- Ensure that chest freezer lid is completely closed after every use.
- Defrost frozen meat completely before cooking.
- Close the lid gently.
- Check contents of the freezer at regularly.
- Clean and defrost your freezer regularly (See "Defrosting")

CARE & CLEANING

- Keep food for a short a time as possible and adhere to “Best Before”, “Use By” dates.
- Store commercially frozen food according to the instructions on the label.
- Always choose high quality fresh food and be sure it is thoroughly clean before freezing it.
- Prepare fresh food for freezing in small portions to ensure rapid freezing.
- Wrap all foods in aluminum foil or air-tight freezer-quality plastic bags.
- Wrap frozen food when you buy it and put it in to the freezer as soon as possible.
- Store small items in the basket provided.
- Remove ice cream from the freezer 10-20 minutes before serving.

DON'T

- Leave the lid open for long periods as this will increase power consumption and result in excessive ice formation.
- Use pointed sharp edged objects such as knives, forks to defrost the ice.
- Put hot food in the freezer. Let it cool down first.
- Put liquid-filled bottles or sealed carbonated drink cans into the freezer as they may burst.
- Store toxic or dangerous substances in the freezer. Store of edible foodstuffs only.
- Consume ice-cream and water ices direct from the freezer. The low temperature may cause ‘freezer burns’ on lips.
- Freeze fizzy drinks.
- Keep frozen food which has thawed. Eat them within 24 hours or cooked and refrozen.
- Remove items from the freezer with wet hands.
- Shut the lid with force to prevent damage to the appliance.

ELECTRICAL INFORMATION

THIS APPLIANCE MUST BE EARTHED.

- This appliance is fitted with a fused three pin plug to BS 1363 which will be suitable for use in all houses fitted with power supply outlets to current specifications.
- If the fitted plug is not suitable for your power supply, it should be cut off and carefully disposed of. Do not insert the discarded power plug into a power supply to avoid a possible shock hazard. This appliance complies with the EEC Directives:

CORRECT DISPOSAL OF THIS PRODUCT



This marking indicates that this product should not be disposed with other household wastes throughout the EU. To prevent possible harm to the environment or human health from uncontrolled waste disposal, recycle it responsibly to promote the sustainable reuse of material resources. To return your used device, please use the return and collection systems or contact the retailer where the product was purchased. They can take this product for environmental safe recycling.

Warning for proper disposal

- Refrigerant and cyclopentane foaming material used for the refrigerator are flammable. Therefore, when the refrigerator is scrapped, keep it away from any fire source and have it recovered by a specific recovering company.
- When the refrigerator is scrapped, disassemble the doors, and remove gasket of door and shelves; put the doors and shelves in a proper place, so as to prevent a child-trap.