

SMART LIVING

For A Quality Lifestyle



AIR COOLER



AIR COOLER MAC-AMPLEFLOW 18

- Power: 600W
- Large water tank capacity: 120L
- Air flow: 16,000m³/hr
- Suitable for room size up to 90m²
- 3-Sided Durable honeycomb filter for Max Cooling with dust proof cover

RM2009(WM) RM2159(EM)
RRP: RM2889(WM) RM3039(EM)



AIR COOLER MAC-COOL10A

- Power: 220W
- Water tank capacity: 60L
- Air flow: 2800m³/hr
- Suitable for room size up to 80m²

RM1099(WM) RM1179(EM)
RRP: RM1669(WM) RM1749(EM)



AIR COOLER MAC-COOL3

- Power: 100W
- Water tank capacity: 10L
- Air flow: 1600m³/hr
- Suitable for room size up to 25m²
- With Ionizer
- 2 Cooler Packs

RM629(WM) RM649(EM)
RRP: RM929(WM) RM949(EM)



AIR COOLER MAC-COOL1B

- Power: 130W
- Water tank capacity: 10L
- Air flow: 1200m³/hr
- Suitable for room size up to 20m²
- Durable Honeycomb Filter with Dust Proof Cover
- With Ionizer
- 2 Cooler Packs

RM399(WM) RM409(EM)
RRP: RM609(WM) RM619(EM)



AIR COOLER MAC-COOL7

- Power: 90W
- Large water tank capacity: 35L
- Air flow: 3000m³/hr
- Suitable for room size up to 20-30m²
- 3-Sided Durable honeycomb filter for Max Cooling with dust proof cover
- LED Display With touch Control
- Timer Setting Function Up to 12 Hours
- 2 Cooler Packs

RM739(WM) RM769(EM)
RRP: RM1079(WM) RM1109(EM)



AIR COOLER MAC-CX12

- Power: 65W
- Large water tank capacity: 12L
- Air flow: 1150m³/hr
- Suitable for room size up to 20m²
- Durable Honeycomb Filter with Dust Proof Cover
- 4 Cooler Packs

RM339(WM) RM349(EM)
RRP: RM499(WM) RM509(EM)



PORTABLE AIR-COND



PORTABLE AIR-COND MAC-121 SIERRAIRE

- Cooling capacity: 12000btu/hr (3500W)
- Suitable for room size up to 25-30m²
- Auto Up/Down Swing Louvers
- Automatic Evaporative System
- 3-in-1 Function of Cooling, Dehumidifying and Fan
- With LOW/MID/HIGH Fan Speeds
- 24 hour ON/OFF Timer
- With Remote Control

RM1699(WM) RM1729(EM)
RRP: RM3029(WM) RM3059(EM)



PORTABLE AIR-COND MAC-091 Feather Lite

- Cooling capacity: 9000btu/hr (2.61kw)
- Suitable for room size up to 14m²
- Washable filters
- Self-Evaporative system & drain outlet design
- 4 Modes – Cool, Fan, Dehumidifying & Sleep
- High & Low Fan Speeds
- 24 Hour ON/OFF Timer

RM1199(WM) RM1219(EM)
RRP: RM2209(WM) RM2229(EM)



PORTABLE AIR-COND MAC-093 Lite

- Cooling capacity: 9000btu/hr (2.61kw)
- Suitable for room size up to 14-20m²
- Washable filters
- Auto left & right swing louvers
- Automatic Evaporative system
- 3 in 1 function of Cooling/Dehumidifying/Fan
- High & Low Fan Speeds
- 24 Hour ON/OFF Timer
- With Remote Control

RM1199(WM) RM1219(EM)
RRP: RM2209(WM) RM2229(EM)

WALL & TABLE FAN



WALL FAN

MWF-NC168MS

- Power rating: 45W
- Thermal safety fuse
- High Quality & Durable Motor
- Smooth Oscillation
- 3 Speed Mode

RM179(WM) RM189(EM)
RRP: RM239(WM) RM249(EM)



TABLE FAN

MTF-12T1

- Power rating: 45W
- Powerful air flow with 12" AS fan blade
- Thermal safety fuse
- High Quality & Durable Motor
- Smooth Oscillation
- 3 Speed Mode

RM95(WM) RM101(EM)
RRP: RM149(WM) RM155(EM)



TABLE FAN

MTF-16T1

- Power rating: 55W
- Powerful air flow with 16" AS fan blade
- Thermal safety fuse
- High Quality & Durable Motor
- Smooth Oscillation
- 3 Speed Mode

RM105(WM) RM111(EM)
RRP: RM179(WM) RM185(EM)

CIRCULATION FAN

CIRCULATION FAN

MFQ-D3RC

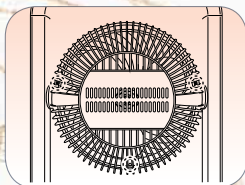
- Power: 105W
- Fan Blades: Ø8"
- Three Independent fan with 3 speed control.
- Adjustable tilt position.
- Auto Oscillation for left and right.
- Manual Oscillation for up and down.
- Timer setting up to 7 hours
- With remote control
- Easy dismantle for cleaning

RM439(WM) RM459(EM)

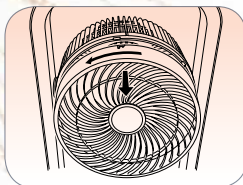
RRP: RM619(WM) RM639(EM)



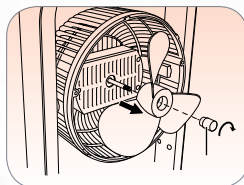
CARE & CLEANING



Remove the power plug from the power supply before disassembling the fan for cleaning. Remove the three screws from the back cover.



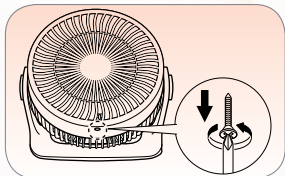
Twist the front cover to the left to detach it.



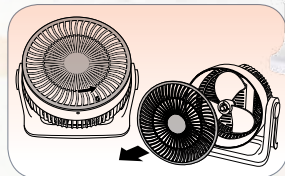
Twist the fan blade screw to the right and detach the fan blade. Proceed to clean the fan blade.



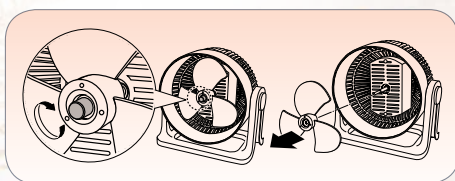
CARE & CLEANING



Remove the power plug from the power supply before disassembling the fan for cleaning. Remove the screw under the front cover.



Twist the front cover to the left to detach it.



Twist the fan blade screw to the right and detach the fan blade. Proceed to clean the fan blade.

CIRCULATION FAN

MFQ-SB35W (PK) BREEZER
MFQ-SB35W (GR) BREEZER
MFQ-SB35W (BL) BREEZER

- Power: 35W
- Fan Blades: Ø8"
- 3 Speeds Hi / Mid. / Low
- Manual Oscillation up and down
- Adjustable tilt position.
- Easy dismantle for cleaning

RM95(WM) RM96(EM)

RRP: RM139(WM) RM140(EM)



NEW

CIRCULATION FAN

MFQ-SC61M

- Power: 60W
- Fan size: Ø265mm
- Fan blades size: Ø228mm
- Mechanical control
- Easy detachable front net cover for cleaning
- 4 setting speeds
- Left and right auto-oscillation angle up to 65°
- Up and down auto-oscillation angle up to 85°

RM289(WM) RM295(EM)

RRP: RM339(WM) RM345(EM)

CEILING FAN



CEILING FAN

MFC-EURUS 360 BK
MFC-EURUS 360 WH

- Power: 80W
- Blade Size: 60 inch
- Durable 100% copper wire motor
- Built-in Safety Thermal Fuse
- Built-in Safety Wire with Locks for Extra Protection
- Corrosion Resistant Fan Blade
- 5 Speeds Control Regulator

RM129(WM) RM133(EM)
RRP: RM205(WM) RM209(EM)



VENTILATION FAN

VENTILATION FAN

MVF-CA12XS

- Power rating: 30W
- Ceiling Mounted Type
- For Shop, Office Room, Living Room & Kitchen
- Elegant Design
- Energy Efficient
- Fan size: 120mm

RM119(WM) RM120(EM)
RRP: RM169(WM) RM170(EM)



VENTILATION FAN

MVF-CB12XW

- Power rating: 30W
- Ceiling Mounted Type
- For Shop, Office Room, Living Room & Kitchen
- Elegant Design
- Energy Efficient
- Fan size: 120mm

RM109(WM) RM110(EM)
RRP: RM159(WM) RM160(EM)



VENTILATION FAN

MVF-WA80

- Power rating: 30W
- Wall Mounted Type
- For Shop, Office Room, Living Room & Kitchen
- Energy Efficient
- Powerful Motor
- Fan size: 200mm

RM89(WM) RM90(EM)
RRP: RM119(WM) RM120(EM)

VENTILATION FAN

MVF-WA100

- Power rating: 35W
- Wall Mounted Type
- For Shop, Office Room, Living Room & Kitchen
- Energy Efficient
- Powerful Motor
- Fan size: 250mm

RM99(WM) RM100(EM)
RRP: RM139(WM) RM140(EM)

VENTILATION FAN

MVF-WA120

- Power rating: 45W
- Wall Mounted Type
- For Shop, Office Room, Living Room & Kitchen
- Elegant Design
- Powerful Motor
- Fan size: 300mm

RM109(WM) RM115(EM)
RRP: RM159(WM) RM165(EM)

CHEST FREEZER

CHEST FREEZER

MCF-7307L

Product Dimension(mm): 2030L x 725D x 910H

- Capacity: 700L
- CFC Free
- 2 Doors
- Durable Epoxy Inner
- Fridge or Freezer Adjustable thermostat
- Fridge Temperature: 2°C to 10°C
- Freezer Temperature: -10°C to -20°C

RM2959(WM) RM3269(EM)

RRP: RM5999(WM) RM6309(EM)

CHEST FREEZER

MCF-6307L

Product Dimension(mm): 1800L x 760D x 827H

- Capacity: 600L
- CFC Free
- 2 Doors
- Durable Epoxy Inner
- Fridge or Freezer Adjustable thermostat
- Fridge Temperature: 5°C to -3°C
- Freezer Temperature: -8°C to -24°C

RM2309(WM) RM2549(EM)

RRP: RM5029(WM) RM5269(EM)



CHEST FREEZER

MCF-5507L

Product Dimension(mm): 1600L x 765D x 826H

- Capacity: 520L
- CFC Free
- 2 Doors
- Durable Epoxy Inner
- Fridge or Freezer Adjustable thermostat
- Fridge Temperature: 5°C to -3°C
- Freezer Temperature: -8°C to -24°C

RM2259(WM) RM2479(EM)

RRP: RM4399(WM) RM4619(EM)

CHEST FREEZER

MCF-4507L

Product Dimension(mm): 1440L x 680D x 826H

- Capacity: 423L
- CFC Free
- Durable Epoxy Inner
- Fridge or Freezer Adjustable thermostat
- Fridge Temperature: 5°C to -3°C
- Freezer Temperature: -8°C to -24°C

RM1789(WM) RM1959(EM)

RRP: RM3609(WM) RM3779(EM)

CHEST FREEZER

MCF-3507L

Product Dimension(mm): 1100L x 680D x 826H

- Capacity: 303L
- CFC Free
- Durable Epoxy Inner
- Fridge or Freezer Adjustable thermostat
- Fridge Temperature: 5°C to -3°C
- Freezer Temperature: -8°C to -24°C

RM1349(WM) RM1479(EM)

RRP: RM2929(WM) RM3059(EM)

CHEST FREEZER

MCF-3007L

Product Dimension(mm): 950L x 680D x 826H

- Capacity: 253L
- CFC Free
- Durable Epoxy Inner
- Fridge or Freezer Adjustable thermostat
- Fridge Temperature: 5°C to -3°C
- Freezer Temperature: -8°C to -24°C

RM1349(WM) RM1469(EM)

RRP: RM2829(WM) RM2949(EM)



CHEST FREEZER

MCF-1178L

Product Dimension(mm): 580L x 520D x 830H

- Capacity: 116L
- CFC Free
- Durable Epoxy Inner
- Fridge or Freezer Adjustable thermostat
- Fridge Temperature: 5°C to -3°C
- Freezer Temperature: -8°C to -24°C

RM839(WM) RM899(EM)

RRP: RM1669(WM) RM1729(EM)

CHEST FREEZER

MCF-0958L

Product Dimension(mm): 530L x 440D x 830H

- Capacity: 80L
- CFC Free
- Durable Epoxy Inner
- Fridge or Freezer Adjustable thermostat
- Fridge Temperature: 5°C to -3°C
- Freezer Temperature: -8°C to -24°C

RM759(WM) RM799(EM)

RRP: RM1459(WM) RM1499(EM)

CHEST FREEZER

MCF-0658L

Product Dimension(mm): 532L x 455D x 588H

- Capacity: 60L
- CFC Free
- Durable Epoxy Inner
- Fridge or Freezer Adjustable thermostat
- Fridge Temperature: 0°C to 10°C
- Freezer Temperature: -1°C to -20°C

RM719(WM) RM749(EM)

RRP: RM1279(WM) RM1309(EM)



CHEST FREEZER

MCF-EVEREST 10

Product Dimension(mm): 590L x 545D x 845H

- Capacity: 105L
- CFC Free
- Durable Epoxy Inner
- Coated Wire Basket
- Fridge or Freezer Adjustable thermostat
- Fridge Temperature: 2°C to 8°C
- Freezer Temperature: -10°C to -24°C

RM909(WM) RM969(EM)

RRP: RM1669(WM) RM1729(EM)

CHEST FREEZER

MCF-EVEREST 15

Product Dimension(mm): 705L x 596D x 840H

- Capacity: 150L
- CFC Free
- Durable Epoxy Inner
- Coated Wire Basket
- Fridge or Freezer Adjustable thermostat
- Fridge Temperature: 2°C to 8°C
- Freezer Temperature: -10°C to -24°C

RM1129(WM) RM1199(EM)

RRP: RM2239(WM) RM2309(EM)

CHEST FREEZER

MCF-EVEREST 20

Product Dimension(mm): 906L x 600D x 836H

- Capacity: 205L
- CFC Free
- Durable Epoxy Inner
- Coated Wire Basket
- Fridge or Freezer Adjustable thermostat
- Fridge Temperature: 2°C to 8°C
- Freezer Temperature: -10°C to -24°C

RM1249(WM) RM1339(EM)

RRP: RM2629(WM) RM2719(EM)



*Recommended Resale Price

GLASS DOOR FREEZER

GLASS DOOR CHEST FREEZER

MCF-G456L

Product Dimension(mm): 1434L x 651D x 800H

- Capacity: 456L
- CFC Free
- Epoxy Inner
- With Key Lock
- High Energy Efficiency Compressor
- Fridge or Freezer Adjustable Thermostat
- With 2 Baskets
- Fridge Temperature: 0°C to 10°C
- Freezer Temperature: -1°C to -18°C

RM2519(WM) RM2689(EM)

RRP: RM4029(WM) RM4199(EM)



GLASS DOOR CHEST FREEZER

MCF-G336L

Product Dimension(mm): 1034L x 651D x 800H

- Capacity: 336L
- CFC Free
- Epoxy Inner
- With Key Lock
- High Energy Efficiency Compressor
- Fridge or Freezer Adjustable Thermostat
- With 2 Baskets
- Fridge Temperature: 0°C to 10°C
- Freezer Temperature: -1°C to -18°C

RM2189(WM) RM2309(EM)

RRP: RM3459(WM) RM3579(EM)



UPRIGHT FREEZER & MINI BAR



UPRIGHT FREEZER MUF-DC168

- Rated wattage: 130W
- Capacity: 163L
- CFC Free / Direct Cool
- Easy to clean
- Adjustable thermostat
- Mechanical temperature control
- High energy efficiency compressor
- Freezer temperature: -14°C~-24°C
- With 6 freezer compartment drawers
- Compressor: 5 Years warranty

RM1499(WM) RM1599(EM)

RRP: RM2659(WM) RM2759(EM)



UPRIGHT FREEZER MUF-1280L

- Rated wattage: 210W
- Capacity: 285L
- CFC Free / Frost Free
- Deep and Quick Freezing
- High energy efficiency compressor
- Easy to clean
- Adjustable thermostat
- With 7 freezer compartments
- With Key lock
- Freezer Temperature: 0°C ~ -18°C
- Compressor: 5 Years Warrantys

RM2599(WM) RM2739(EM)

RRP: RM4309(WM) RM4449(EM)



UPRIGHT FREEZER MUF-DC88

- Rated wattage: 130W
- Capacity: 85L
- CFC Free / Direct Cool
- Easy to clean
- Adjustable thermostat
- Mechanical temperature control
- High energy efficiency compressor
- Freezer temperature: -14°C~-24°C
- With 4 freezer compartment drawers
- Compressor: 5 Years warranty

RM1199(WM) RM1249(EM)

RRP: RM1719(WM) RM1769(EM)



MINI BAR MMB-NB62LSL

- Capacity: 50L
- CFC Free
- Adjustable thermostat
- Product Dimension(mm): 475L x 450D x 487H

RM529(WM) RM549(EM)

RRP: RM859(WM) RM879(EM)



ELECTRIC OVEN



ELECTRIC OVEN MEO-GLAMO 150RCSS

- Power: 2800W
- Capacity: 150L
- 8 function selector: OFF, Fermentation, Upper heating, Lower heating, Upper + Lower heating, Upper + Lower heating with Convection, Upper + Lower heating with Rotisserie and Upper + Lower heating with Convection + Rotisserie.
- With defrost function (at top temperature control knob)
- 70°C to 250°C adjustable temperature selector for various cooking functions
- 2pcs "M" shape Stainless steel heating elements
- Independent temperature control. (Top & bottom temperature can be adjusted separately.)
- 120 minutes switch off timer with ring.
- With inner oven lamp
- Accessories: 3pcs enamel baking tray, rotisserie set, rotisserie Basket, wire rack, crumb tray and tray handle

RM1399(WM) RM1459(EM)
RRP: RM1899(WM) RM1959(EM)

ELECTRIC OVEN MEO-GLAMO 100RC

- Power: 2800W
- Capacity: 100L
- 8 function selector: OFF, Fermentation, Upper heating, lower heating, Upper + Lower heating, Upper + Lower heating with Convection, Upper + Lower heating with Rotisserie and Upper + Lower heating with Convection + Rotisserie.
- With defrost function (at top temperature control knob)
- 70°C to 250°C adjustable temperature selector for various cooking functions
- 2pcs "M" shape Stainless steel heating elements
- Independent temperature control. (Top & bottom temperature can be adjusted separately.)
- 120 minutes switch off timer with ring.
- With inner oven lamp
- Accessories: Rotisserie set, wire rack, 2pcs enamel baking tray, crumb tray and tray handle.

RM899(WM) RM939(EM)
RRP: RM1389(WM) RM1429(EM)



ELECTRIC OVEN MEO-GLAMO 120RC

- Power: 2800W
- Capacity: 120L
- 8 function selector: OFF, Fermentation, Upper heating, Lower heating, Upper + Lower heating, Upper + Lower heating with Convection, Upper + Lower heating with Rotisserie and Upper + Lower heating with Convection + Rotisserie.
- With defrost function (at top temperature control knob)
- 70°C to 250°C adjustable temperature selector for various cooking functions
- 2pcs "M" shape Stainless steel heating elements
- Independent temperature control. (Top & bottom temperature can be adjusted separately.)
- 120 minutes switch off timer with ring.
- With inner oven lamp
- Accessories: Rotisserie set, wire rack, 2pcs enamel baking tray, crumb tray and tray handle.

RM1139(WM) RM1179(EM)
RRP: RM1569(WM) RM1609(EM)



NEW!

ELECTRIC OVEN



ELECTRIC OVEN MEO-602RC

- Power: 2200W
- Capacity: 60 Liter
- 6 Function selector
- With rotisserie & convection function
- Perfect for grilling, baking and toasting
- 100°C – 250°C adjustable temperature selector for various cooking functions
- Stainless Steel heating elements
- 60 minutes switch off timer with bell
- With inner lamp
- Accessories: Rotisserie set, 2pcs baking tray, wire rack, ray handle & crumb tray

RM529(WM) RM559(EM)

RRP: RM929(WM) RM959(EM)



ELECTRIC OVEN MEO-GLAMO 45RC

- Power: 1800W
- Capacity: 45L
- 6 function selectors: OFF, both upper & lower heating with convection, upper heating with convection, both upper & lower heating, upper heating with rotisserie and both upper & lower heating with convection rotisserie.
- 100°C – 250°C adjustable temperature selector for various cooking functions
- Stainless steel heating elements
- With Inner lamp
- 60 minutes timer with bell ring
- Accessories: 2 pcs enamel baking tray, rotisserie set, wire rack, crumb tray and tray handle.

RM439(WM) RM459(EM)

RRP: RM639(WM) RM659(EM)



ELECTRIC OVEN MEO-HC26C

- Power: 1500W
- Capacity: 26 Liter
- 6 function selector: OFF, upper heating, lower heating, both upper & lower heating, upper heating with convection and both upper & lower heating with convection
- 100°C-250°C Adjustable Temperature Selector for Various Cooking Functions
- 60min Timer With Bell Ring
- Stianless Steel Heating Element
- With Indicator Light
- Accessories: 1pc Bake Tray, 1pc Wire Rack & Tray Handle

RM219(WM) RM229(EM)

RRP: RM339(WM) RM349(EM)

ELECTRIC OVEN MEO-GLAMO 23B

- Power: 1380W
- Capacity: 21L
- 4 function selector: OFF, both upper & lower heating, upper heating and lower heating
- 60min Timer With Bell Ring
- Accessories: 2pc Baking tray, wire ack & tray handle
- 100°C-250°C Adjustable Temperature Selector for Various Cooking Functions
- Stianless Steel Heating Element

RM199(WM) RM209(EM)

RRP: RM269(WM) RM279(EM)



CHILLER SHOWCASE

CHILLER SHOWCASE MCS-198

- Rated wattage: 230W
- Capacity: 170L
- Frost Free
- Double tempered Glass Door
- With Key Lock
- Inner dimension(mm): 450W x 360D x 960H
- Product dimension(mm): 545W x 580D x 1342H
- Temperature: 0°C to 10°C
- Self-evaporation water tray
- Each shelf is able to hold up to 20kgs

RM1699(WM) RM1789(EM)

RRP: RM2789(WM) RM2879(EM)



CHILLER SHOWCASE MCS-298

- Rated wattage: 240W
- Capacity: 250L
- Frost Free
- Double tempered Glass Door
- With Key Lock
- Inner dimension(mm): 450W x 360D x 1320H
- Product dimension(mm): 545W x 580D x 1725H
- Temperature: 0°C to 10°C
- Self-evaporation water tray
- Each shelf is able to hold up to 20kgs

RM2199(WM) RM2319(EM)

RRP: RM3569(WM) RM3689(EM)



CHILLER SHOWCASE MCS-488

- Rated wattage: 330W
- Capacity: 430L
- Frost Free
- Inner dimension(mm): 523W x 510D x 1565H
- Product dimension(mm): 606W x 665D x 2000H
- Temperature: 0°C to 10°C
- Each shelf is able to hold up to 36kgs

RM3399(WM) RM3579(EM)

RRP: RM5099(WM) RM5279(EM)



CHILLER SHOWCASE MCS-338

- Rated wattage: 250W
- Capacity: 288L
- Frost Free
- Inner dimension(mm): 489W x 481D x 1176H
- Product dimension(mm): 578W x 605D x 1824H
- Temperature: 0°C to 10°C
- Each shelf is able to hold up to 36kgs

RM2799(WM) RM2939(EM)

RRP: RM4299(WM) RM4439(EM)

AIR FRYER OVEN & AIR FRYER



AIR FRY



BROIL



BAKE



TOAST



GRILL



ROAST



AIR FRYER OVEN MAO-VORTEX PRO 22

- Power: 1500W
- Capacity: 22L
- 6 Functions: Air Fry, Broil, Bake, Toast, Convection Grill, Convection Roast.
- 65°C to 230°C Adjustable Temperature Selector for Various Cooking functions.
- 60min Timer With Bell Ring
- Equipped with 6pcs Stainless Steel heating elements and Large turbo convection fan (SAVE UP TO 50% cooking time.)
- Auto shut off safety protection. (When door is open during cooking it will stop operation)
- Oil-free cooking
- Inner oven lamp
- Accessories: Baking Tray, Wire Rack and Air Fry Basket

RM499(WM) RM509(EM)
RRP: RM899(WM) RM909(EM)



AIR-FRYER MAF-C707

- Power: 1800W
- Capacity: 7.7L
- Temperature control 80°C–200°C
- With timer up to 30 minutes
- Ideal for Roasting, Grilling and Frying without oil
- With non-stick coating pot
- Extra large capacity for various cooking needs
- With rapid air circulation system

RM559(WM) RM569(EM)
RRP: RM679(WM) RM689(EM)



Frying without Oil



Ideal for Roasting



Ideal For Grilling

NEW!



Frying without Oil



Ideal for Roasting



Ideal For Grilling



AIR-FRYER MAF-EROS 8

- Power: 1800W
- Capacity: 8.0L
- Temperature control 80°C–200°C
- With timer up to 60 minutes
- Presets control with digital display
- With non-stick coating pot
- Transparent window for easy visual cooking
- With rapid air circulation system
- With sensor touch panel
- Overheat protection

RM559(WM) RM570(EM)
RRP: RM779(WM) RM790(EM)

AIR-FRYER MAF-OPTIMAL 8

- Power: 1200W
- Capacity: 8.0L
- Removable inner pot with non-stick coating
- With rapid air circulation system
- Temperature control 80°C to 210°C
- With timer up to 99 minutes

RM559(WM) RM570(EM)
RRP: RM779(WM) RM790(EM)



Ideal for Roasting



Frying without Oil



3D Rotation Cooking



LED Display Panel



Ideal For Grilling



Ideal for Baking



Accessories



Removable Inner Pot Design



AIR-FRYER MAF-C607

- Power: 1300W
- Capacity: 2.8L
- Temperature control 80° – 200°C
- With timer up to 60 minutes
- Removable pot with non-stick coating
- With rapid air circulation system
- Overheat protection and handle button cover

RM339(WM) RM345(EM)
RCP: RM449(WM) RM455(EM)

STAND MIXER & HAND MIXER

STAND MIXER

MSM-SB1500

- Power rating: 1500W powerful motor, low noise
- 6.7L brushed stainless steel bowl
- Variable 8 stepless speed and pulse function

RM1449(WM) RM1459(EM)

RRP: RM2029(WM) RM2039(EM)



Dough Kneading



Egg Beating



Batter Mixing



Splashguard with Convenient Ingredients Inlet



Egg Whisking



Batter Mixing



Dough Kneading



Splash Guard with Convenient Ingredient Inlet



STAND MIXER

MSM-NC400HM

- Power rating: 400W
- Capacity: 3.5L mixer bowl
- 5 speeds with turbo function

RM219(WM) RM225(EM)

RRP: RM309(WM) RM315(EM)



STAND MIXER

MSM-MIXTE 12

- Power rating: 1200W powerful motor
- 5.5L Stainless Steel Bowl
- Stepless speed and pulse function
- Non-slipping rubber feet
- Accessories: Whisk, Beater and Hook

RM619(WM) RM629(EM)

RRP: RM1019(WM) RM1029(EM)



STAND MIXER

MSM-NC300HM

- Power rating: 300W
- Capacity: 3.4L mixer bowl
- 5 speeds with turbo function
- With automatic rotated bowl

RM155(WM) RM161(EM)

RCP: RM219(WM) RM225(EM)



HAND MIXER

MHM-MIXX 300

- Power rating: 300W
- 6 speeds with Turbo function
- With individual eject button
- Accessories: 2pcs stainless steel beater, 2pcs dough hook and 1pc of whisk
- With accessories storage box

RM99(WM) RM100(EM)

RRP: RM119(WM) RM120(EM)



JUG KETTLE & ELECTRIC KETTLE



JUG KETTLE

MJK-927

- Rated wattage: 1850-2200W
- Capacity: 1.7L
- Removable Filter For Easy Cleaning
- Stainless Steel Heating Element
- Automatic Shut-off and Boil-dry Protection
- ON/OFF Switch with Light Indicator
- With Large Water Gauge for Easy Viewing

RM39(WM) RM40(EM)

RRP: RM69(WM) RM70(EM)



JUG KETTLE

MJK-917

- Rated wattage: 1850-2200W
- Capacity: 1.7L
- Removable Filter For Easy Cleaning
- Stainless Steel Heating Element
- ON/OFF Switch with Light Indicator

RM39(WM) RM40(EM)

RRP: RM69(WM) RM70(EM)



JUG KETTLE

MJK-1017L

- Power rating: 1850W – 2200W
- Capacity: 1.7 Liter
- Swivel base cordless
- Concealed Heating Element

RM89(WM) RM90(EM)

RRP: RM129(WM) RM130(EM)



JUG KETTLE

MJK-1010L

- Power rating: 1000W – 1200W
- Capacity: 1.0 Liter
- Swivel base cordless
- Concealed Heating Element

RM79(WM) RM80(EM)

RRP: RM109(WM) RM110(EM)



JUG KETTLE

MJK-8017LS

- Power rating: 1850W – 2200W
- Capacity: 1.7 Liter
- Swivel base cordless
- SUS304 Stainless Steel Seamless Inner Pot
- Concealed Heating Element
- Removable Filter For Easy Cleaning

RM139(WM) RM140(EM)

RRP: RM219(WM) RM220(EM)



ELECTRIC KETTLE

MEK-4802SSCL

- Power rating: 1850W – 2200W
- Capacity: 4.8 Liter
- Foldable Handle
- SUS304 Stainless Steel Seamless Inner Pot
- Concealed Heating Element
- Cordless 360° Rotational Base with Safety Boil Dry Protection

RM179(WM) RM180(EM)

RRP: RM239(WM) RM240(EM)

THERMO POT



THERMO POT

MTP-266TSS

- Power rating: 750-892W
- Capacity: 6.0L
- SUS304 Stainless steel inner pot
- With safety lock function
- 5 Temperature control: 90°C, 80°C, 60°C, 40°C and Auto Cool
- Stainless steel steam vent
- Screwless design lid
- Unique base designed inner pot

RM215(WM) RM221(EM)

RRP: RM329(WM) RM335(EM)



THERMO POT

MTP-350TS

- Power rating: 750-892W
- Capacity: 5L
- 'SUS 304' stainless steel interior pot
- Screwless design lid
- Stainless steel steam venting hole
- Unique base designed inner pot

RM195(WM) RM201(EM)

RCP: RM289(WM) RM295(EM)



THERMO POT

MTP-TC160L

- Power rating: 750W
- Capacity: 6.0L
- SUS304 Stainless steel inner pot
- 360° Swivel base
- Two-way Dispenser (Button/Cup)
- With auto reboil & keep warm function

RM175(WM) RM181(EM)

RCP: RM269(WM) RM275(EM)



SANDWICH MAKER AND TOASTER



NEW

SANDWICH MAKER MSM-SC140NS

- Power rating: 700W
- 2-Slice sandwich toasting plate
- Non-stick coated plate for easy cleaning
- Automatic temperature control
- Horizontal & Vertical storage for space-saving
- Anti-slip feet design
- With power and ready indicator light
- With buckle
- Cord storage

RM69(WM) RM70(EM)
RRP: RM99(WM) RM100(EM)

TOASTER MTS-22A

- Power rating: 750W
- Auto bread centralizing feature
- Wider slot for thicker breads
- With dust cover
- With defrost, reheat, cancel functions & 7 levels of browning control.
- With crumb tray

RM75(WM) RM76(EM)
RRP: RM99(WM) RM100(EM)



JUICE EXTRACTOR

JUICE EXTRACTOR MJE-SC160W

- Power rating: 600W
- 65mm diameter of feeding tube for whole apple.
- 1.5L pulp container & 550ml juice cup
- Stainless steel housing
- Two speed control section

RM199(WM) RM200(EM)
RRP: RM249(WM) RM250(EM)



JUICE EXTRACTOR MJE-AA05W

- Power rating: 250W
- Large feeding tube
- High juice extracting rate
- Stainless steel filter

RM109(WM) RM110(EM)
RRP: RM139(WM) RM140(EM)



FOOD DEHYDRATOR



FOOD DEHYDRATOR MFD-A9

- Power rating: 420W – 500W
- Adjustable trays' height for different size of fruits
- Safety overheating protection
- Adjustable temperature for different foods
- Built-in ventilator for freshness & nutrition
- Dishwasher-safe trays & cover
- 5-interchangeable trays
- Ideal for DIY healthy & Natural snacks

RM229(WM) RM239(EM)
RRP: RM309(WM) RM319(EM)



Excellent for dried vegetables



Perfect for dried fruits



Superb for dried flowers



Ideal for dried spices



Great for dried meats

PAN GRILL

PAN GRILL MPG-2898

- Power rating: 1300W
- Detachable non-stick heating plate
- Oil free cooking for healthier meals

RM199(WM) RM205(EM)
RRP: RM269(WM) RM275(EM)



PAN GRILL MPG-DA898NS

- Power rating: 1500-1800W
- Dual temperature control
- Oil free cooking for healthier meals

RM269(WM) RM275(EM)
RRP: RM379(WM) RM385(EM)



RICE COOKER



Convenient Lid Holder



Accessories



COMMERCIAL RICE COOKER

MCR-VAST 10

- Power rating: 2800W
- Capacity: 10L
- Large control panel with 1 button easy operation
- Stainless steel large handle lid with holder for hung on the side of the pot
- Removable non-stick inner pot
- With keep warm functions
- With overheat cut-off protection
- Max rice volume: 7.5kgs & min rice volume 2kgs; Max. up to 50 persons

RM449(WM) RM469(EM)

RRP: RM699(WM) RM719(EM)



COMMERCIAL RICE COOKER

MCR-VAST 7

- Power rating: 2500W
- Capacity: 6.6L
- Large control panel with 1 button easy operation
- Stainless steel large handle lid with holder for hung on the side of the pot
- Removable inner pot with non-stick coating
- With keep warm functions
- With overheat cut-off protection
- Max rice volume: 5kgs & min rice volume 1.6kgs; Max. up to 35 persons

RM389(WM) RM399(EM)

RRP: RM559(WM) RM569(EM)

NEW!



JAR RICE COOKER

MRC-2318J

- Power rating: 700W
- Capacity: 1.8L
- Non-stick coated inner pot
- With detachable steam vent
- With steam tray

RM139(WM) RM145(EM)

RRP: RM189(WM) RM195(EM)



JAR RICE COOKER

MRC-2310J

- Power rating: 400W
- Capacity: 1.0L
- Non-stick coated inner pot
- With detachable steam vent
- With steam tray

RM115(WM) RM116(EM)

RRP: RM159(WM) RM160(EM)



RICE COOKER

MRC-TD618NS

- Power rating: 700W
- Capacity: 1.8L
- Stainless steel lid
- Non-stick coated inner pot
- Aluminium steaming basket

RM119(WM) RM125(EM)

RRP: RM169(WM) RM175(EM)



RICE COOKER

MRC-TD610NS

- Power rating: 400W
- Capacity: 1.0L
- Stainless steel lid
- Non-stick coated inner pot
- Aluminium steaming basket

RM99(WM) RM100(EM)

RRP: RM139(WM) RM140(EM)



RICE COOKER

MRC-TC28

- Power rating: 1000W
- Capacity: 2.8L
- Micro switch control
- With steam tray

RM149(WM) RM155(EM)

RRP: RM209(WM) RM215(EM)



RICE COOKER

MRC-TC18

- Power rating: 700W
- Capacity: 1.8L
- Micro switch control
- With steam tray

RM109(WM) RM115(EM)

RRP: RM159(WM) RM165(EM)



RICE COOKER

MRC-TC10

- Power rating: 400W
- Capacity: 1.0L
- Micro switch control
- With steam tray

RM89(WM) RM90(EM)

RRP: RM129(WM) RM130(EM)

MULTI COOKER



Easy Stir Fry



*Non-Stick Grill Pan



Ideal for Deep Frying



*Stainless Steel Steam Tray for Easy Steaming



MULTI COOKER MMC-3400A*

- Power rating: 1300W
- Capacity: 4.0L
- Auto cut-off to prevent overheating
- "SUS 304" Stainless steel inner pot
- With grill pan & steam tray

RM219(WM) RM225(EM)
RRP: RM319(WM) RM325(EM)



MULTI COOKER MMC-3500

- Power rating: 1000W
- Capacity: 5.0L
- Auto cut-off to prevent overheating
- Ideal for Steamboat, Stir Frying and Deep Frying
- Removable non-stick coated inner pot
- Tempered glass lid

RM169(WM) RM175(EM)
RRP: RM229(WM) RM235(EM)



Ideal for Steamboat with auto cut-off to prevent overheating

MULTI COOKER MMC-3300A

- Power rating: 1000W
- Capacity: 3.0L
- Auto cut-off to prevent overheating
- "SUS 304" Stainless steel inner pot

RM149(WM) RM155(EM)
RRP: RM199(WM) RM205(EM)



FOOD BLENDER



Juice



Smoothies



Soup



Paste



POWER BLENDER MPB-MAXIMUS 15

- Power rating: 1400W
- Capacity: 2.0L Tritan Jar
- High Speed Blender with 3 Pre-programmed Setting
- With maximum RMP: 32000

RM579(WM) RM589(EM)
RRP: RM779(WM) RM789(EM)



6 Stainless Steel Blades



Tamper for Even Mixing



2000ml Tritan Blending Jar



3 Mode Speeds
(Ice Crushing, Smoothie Blending & Soup Blending)



FOOD BLENDER MBL-401WG

- Power rating: 400W
- Capacity: 1.5L
- 2 speeds with pulse function
- With Dry mill grinder
- With safety switch
- With Circuit Breaker Protection

RM99(WM) RM103(EM)
RRP: RM145(WM) RM149(EM)



CERAMIC & INDUCTION COOKER

Ideal for Stainless Steel Grill Plate or Pot



Ideal for Glassware



Ideal for Clay Pots



CERAMIC COOKER MCC-2002

- Power rating: 2000W
- With stainless steel grill plate

RM249(WM) RM250(EM)
RRP: RM379(WM) RM380(EM)



INDUCTION COOKER MIC-2520

- Power rating: 2000W
- 8 cooking functions selection: Hot pot, Fry, Stir fry, BBQ, Soup, Rice, Milk and Water.
- LED Screen Display
- Over-heat Protection System

RM169(WM) RM175(EM)
RRP: RM319(WM) RM325(EM)

GAS STOVE



DOUBLE GAS STOVE MGS-8866G

- 130mm x 130mm Black brass burner head
- Glass top for elegant look & easy cleaning
- High efficiency burner head for powerful flame
- Duplicast Iron Trivets
- Stainless Steel Body
- Piezo ignition

RM329(WM) RM335(EM)
RRP: RM439(WM) RM445(EM)



DOUBLE GAS STOVE MGS-8312G

- 120mm x 120mm Black brass burner head
- Glass top for elegant look & easy cleaning
- High efficiency burner head for powerful flame
- Enamel trivet for durability
- Stainless Steel Body
- Piezo ignition

RM289(WM) RM295(EM)
RRP: RM399(WM) RM405(EM)



DOUBLE GAS STOVE MGS-9313CD

- 130mm x 130mm Copper Brass Burner Head
- 100% Stainless Steel Body
- Duplicast Iron Trivets for Durability
- Elegant Design & Easy Cleaning
- Double Pipe
- Piezo ignition

RM289(WM) RM295(EM)
RRP: RM399(WM) RM405(EM)



DOUBLE GAS STOVE MGS-7313S

- 130mm x 130mm stainless steel burner head
- Stainless steel top
- Double pipe
- Double 8 jets burner
- Piezo ignition

RM169(WM) RM175(EM)
RRP: RM229(WM) RM235(EM)



DOUBLE GAS STOVE MGS-7212S

- 120mm x 120mm stainless steel burner head
- Stainless steel top
- Double pipe
- Enamel trivet for durability
- Piezo ignition

RM149(WM) RM155(EM)
RRP: RM199(WM) RM205(EM)



DOUBLE GAS STOVE MGS-SC9516CD

- 135mm x 135mm Copper Burner Head
- 100% Stainless Steel Body
- Elegant Design
- High Efficiency Burner Head for Powerful Flame
- Duplicast Iron Trivets
- Double Pipe
- Piezo ignition

RM299(WM) RM305(EM)
RRP: RM429(WM) RM435(EM)



DOUBLE GAS STOVE MGS-5515

- 130mm x 150mm Iron burner head
- 100% Stainless steel body
- Elegant design
- High efficiency burner head for powerful flame
- Piezo ignition

RM289(WM) RM295(EM)
RRP: RM389(WM) RM395(EM)



FOOD STEAMER

FOOD STEAMER

MFS-29 NUTRISTEAM (WH) MFS-29 NUTRISTEAM (BK)

- Power: 1600W
- Capacity: 28L
- Come with double heaters
- Rice steaming container and water refill cup
- Stackable steam tray for easy storage
- Exterior water refill funnel with visible water level indicator
- Anti-dry thermostat protection
- 2 levels structure for convenient cooking
- 60 minutes timer with bell

RM319(WM) RM329(EM)
RRP: RM579(WM) RM589(EM)



Stackable for easy Storage



Removable Tray for Larger Steaming Compartment



FOOD STEAMER MFS-MC12L

- Power: 1000W
- Capacity: 12L
- Stainless steel housing
- Convenient refill
- Rice steaming container (1.5L x 1)
- Removable tray for larger steaming compartment
- Stackable for easy storage
- Visible water level
- Overheating protection
- 3 levels structure to cook different foods
- 60 minutes timer
- Cord storage, anti-slip feet

RM199(WM) RM209(EM)
RRP: RM299(WM) RM309(EM)



NEW

STICK VACUUM CLEANER



Detachable & Washable Filter



Motorized dust mite brush.



Power Brush with 180° Swivels sideways and 90° up and down



Crevice Tool Clean Hard To Reach Places



Ellipse Brush Easily Remove Dirt



Detachable and Rechargeable Lithium Battery



Convenient and hygienic dust bucket emptying



Accessories



NEW

CORDLESS 3 in 1 STICK / HANDHELD VACUUM CLEANER MVC-CHS180DB

- Power rating: 180W
- Dust capacity: 0.8L
- Convertible stick / handheld vacuum cleaner
- ≥12,000 PA
- Detachable and rechargeable 2500 mAh Lithium-Ion Battery.
- Full size LED Multi-tasker Power Brush with 180° Swivels sideways for convenient handling in corners and around obstacles.
- Operating time: 38 minutes (long lasting mode), 18 minutes (power suction mode)
- Bagless dust container with cyclone stainless steel mesh and washable HEPA filter
- Convenient and hygienic dust bucket emptying.
- Two speed control for effective and thorough cleaning on various occasions

RM599(WM) RM605(EM)
RRP: RM779(WM) RM785(EM)



Motorized Dust Mite Brush



Crevice Tool Clean Hard To Reach Places



Ellipse Brush Easily Remove Dirt



Washable Fiber Filter



Washable Cyclone Filter



180° Rotatable Brush Hose



Accessories

CORDLESS 3 in 1 STICK / HANDHELD VACUUM CLEANER MVC-CHS120

- Power rating: 120W
- Dust capacity: 1.2L
- With Motorized Dust Mite Brush
- Convertible stick / handheld vacuum cleaner
- ≥10,000 PA
- Rechargeable 2500 mAh capacity Lithium-Ion Battery.
- Continuous use up to 20 minutes running time
- Bagless dust container with Cyclone filter
- Rotating brush with 180° Swivels sideways for convenient handling in corners and around obstacles.

RM399(WM) RM405(EM)
RRP: RM509(WM) RM515(EM)



VACUUM CLEANER



Dry Vacuum



Wet Vacuum



Blow Function



3-in-1 VACUUM CLEANER MVC-TC181SS

- Power rating: 1800W
- 32 Litre dust capacity
- 360° swivel head
- 3-in-1 wet, dry & blow cleaning function
- Washable filter with long-lasting material

RM509(WM) RM519(EM)
RRP: RM679(WM) RM689(EM)



3-in-1 VACUUM CLEANER MVC-TA161DW

- Power rating: 1600W
- 23 Litre dust capacity
- 360° swivel head
- 3-in-1 wet, dry & blow cleaning function
- Washable filter with long-lasting material

RM369(WM) RM379(EM)
RRP: RM499(WM) RM509(EM)



Dry Vacuuming



Wet Vacuuming



Blow Function



Bagless Design
Dust Box



VACUUM CLEANER

MVC-DEXTEROUS 16PK MVC-DEXTEROUS 16BL

- Power rating: 1200-1600W
- 1.8 Litre dust capacity
- Bagless design with Dust Box
- Washable Dust Box – Easy to clean and maintain
- Multiple Filtration System: Pre-Filter, Hepa Filter and Carbon Filter
- Cable rewriter
- With Full Dust Indicator.

RM299(WM) RM309(EM)
RRP: RM409(WM) RM419(EM)



Bagless Design
Dust Box

GARMENT STEAMER & STEAM GENERATOR

GARMENT STEAMER MSI-GB206

- Power: 1350-1650W
- Stainless Steel Steam Panel
- Powerful Steam
- Translucent 2.0L water tank
- Steam rate 32g/min

RM249(WM) RM259(EM)
RRP: RM349(WM) RM359(EM)



Stainless Steel Steam Panel
with Powerful Steam



Rotatable & Collapsible
Hanger



Fabric Brush



Little Helper – for Easy
Ironing



Accessories



Powerful Steam



Lock & Carry



With Calc Clean
Function



Large Removable Water
Tank for Easy Refilling



Non-stick Ceramic
Soleplate



STEAM GENERATOR MSG-27MAXIcare

- Power: 2000-2400W
- 5 bar Steam pressure
- 1.5L Removable water tank
- Steam rate max 100g/min, ECO steam 60g/min
- With cord winder
- Adjustable steam rate and temperature
- Anti-slip iron rest
- No water alarm
- Water tank refill indicator

RM529(WM) RM535(EM)
RRP: RM799(WM) RM805(EM)



FULLY AUTO WASHING MACHINE



FULLY AUTO WASHING MACHINE MWM-13 AQUAMARINE

- Washing Capacity: 13.0Kg
- Spinning Capacity: 13.0Kg
- Washing power: 410W
- Spinning power: 330W
- Stainless Steel Drum
- Magic Cleaning Filter
- Tempered Glass Transparent Lid
- With delay wash function
- Child Lock
- With Detergent drawer Compartment
- Fuzzy Control function
- Anti-Rat Base Design
- Powerful & Durable Motor for Efficient Washing
- With 9 program selection

RM1790(WM) RM1871(EM)
RRP: RM2479(WM) RM2560(EM)



FULLY AUTO WASHING MACHINE MWM-11 SAPPHIRE

- Washing Capacity: 11.0Kg
- Spinning Capacity: 11.0Kg
- Hot Air Dry Capacity: 3.0Kg
- Washing power: 410W
- Spinning power: 330W
- Drying power: 500W
- Stainless Steel Drum
- With Hot Air Dry function
- Magic Cleaning Filter
- Tempered Glass Transparent Lid
- With delay wash function
- Child Lock
- Fuzzy Control function
- Anti-Rat Base Design
- Powerful & Durable Motor for Efficient Washing
- With 8 program selection

RM1790(WM) RM1871(EM)
RRP: RM2479(WM) RM2560(EM)



FULLY AUTO WASHING MACHINE MWM-7 ZIRCON

- Washing Capacity: 7.0Kg
- Spinning Capacity: 7.0Kg
- Washing power: 325W
- Spinning power: 250W
- Stainless Steel Drum
- Magic Cleaning Filter
- Foldable transparent lid
- Anti-Rat Base Design
- With Memory Back Up Function
- Powerful & Durable Motor for Efficient Washing
- With 8 program selection

RM929(WM) RM990(EM)
RRP: RM1329(WM) RM1390(EM)



FULLY AUTO WASHING MACHINE MWM-9 TOPAZ

- Washing Capacity: 9.0Kg
- Spinning Capacity: 9.0Kg
- Washing power: 410W
- Spinning power: 330W
- Stainless Steel Drum
- Magic Cleaning Filter
- Transparent Lid
- With Memory Back Up Function
- Fuzzy Control Function
- With Detergent Drawer Compartment
- Anti-Rat Base Design
- Powerful & Durable Motor for Efficient Washing
- With 8 program selection

RM1199(WM) RM1280(EM)
RRP: RM1809(WM) RM1890(EM)



SEMI AUTO WASHING MACHINE



SEMI AUTO WASHING MACHINE MWM-1312SA

- Washing Capacity: 12.0Kg
- Spinning Capacity: 6.5Kg
- Washing power: 420W
- Spinning power: 180W
- Anti-rat Base Design
- With Lint Filter

RM699(WM) RM799(EM)
RRP: RM1239(WM) RM1339(EM)



SEMI AUTO WASHING MACHINE MWM-1370SA

- Washing Capacity: 7.0Kg
- Spinning Capacity: 5.0Kg
- Washing power: 350W
- Spinning power: 160W
- Anti-rat Base Design
- With Lint Filter

RM469(WM) RM519(EM)
RRP: RM879(WM) RM929(EM)



SEMI AUTO WASHING MACHINE MWM-1310SA

- Washing Capacity: 10.0Kg
- Spinning Capacity: 6.5Kg
- Washing power: 380W
- Spinning power: 180W
- Anti-rat Base Design
- With Lint Filter

RM599(WM) RM679(EM)
RRP: RM1069(WM) RM1149(EM)





Exclusive Dealer:

- Offer valid while stocks last
- Prices shown are not valid for redemption project & duty-free sales
- We reserve the right to alter, modify or replace the product price, specifications & models without prior notice
- All items featured in this catalogue may differ from the actual product in terms of colour & design details
- The recommended resale price is the price which the importer recommends that the retailer sell the product. Retailers are able to independently set the retail price.

*RRP = Recommended resale price

Market Expansion
Services by
www.dksh.com.my



DKSH Malaysia Sdn Bhd 196101000441 (4476-U)
B-11-01, The Ascent, Paradigm,
No. 1, Jalan SS7/26A, Kelana Jaya,
47301 Petaling Jaya, Selangor Darul Ehsan.
Tel: +603 7882 8888 Fax: +603 7882 5555
www.morgan.my

Customer Care Hotline: **03-7781 9229**



facebook.com/morganappliances