

# SMART LIVING

*For A Quality Lifestyle*





# ELECTRIC OVEN

## ELECTRIC OVEN

### MEO-GLAMO 150RCSS

- Power: 2800W
- Capacity: 150L
- Four stages heating selector
- With rotisserie & convection function
- 120 minutes timer with ring
- 100°C – 250°C adjustable temperature selector for various cooking functions
- Stainless steel heating elements
- Stainless steel body
- With Inner oven lamp
- Accessories: 3 pcs baking tray, rotisserie set, rotisserie basket, wire rack, crumb tray and tray handle

**RM1399(WM) RM1459(EM)**  
RCP: RM1899(WM) RM1959(EM)



save up to  
**43%**

## ELECTRIC OVEN

### MEO-GLAMO 120RC

- Power: 2800W
- Capacity: 120L
- Four stages heating selector
- With rotisserie & convection function
- 120 minutes timer with ring
- 100°C – 250°C adjustable temperature selector for various cooking functions
- Stainless steel heating elements
- With Inner oven lamp
- Accessories: 2 pcs enamel baking tray, rotisserie set, wire rack, crumb tray and tray handle

**RM1139(WM) RM1179(EM)**  
RCP: RM1569(WM) RM1609(EM)



## ELECTRIC OVEN

### MEO-1003RC

- Power: 2800W
- Capacity: 100L
- 4 Function selector
- With rotisserie & convection function
- 60 minutes switch off timer with ring
- 100°C – 250°C adjustable temperature selector for various cooking functions
- Stainless steel heating elements
- With Inner oven lamp
- Accessories: Rotisserie set (with 4pcs fork), wire rack, 2 pcs baking tray & tray handle

**RM899(WM) RM939(EM)**  
RCP: RM1389(WM) RM1429(EM)



## ELECTRIC OVEN

### MEO-602RC

- Power: 2200W
- Capacity: 60 Liter
- 6 Function selector
- With rotisserie & convection function
- Perfect for grilling, baking and toasting
- 100°C – 250°C adjustable temperature selector for various cooking functions
- Stainless Steel heating elements
- 60 minutes switch off timer with bell
- With inner lamp
- Accessories: Rotisserie set, 2pcs baking tray, wire rack, ray handle & crumb tray

**RM529(WM) RM559(EM)**  
RCP: RM929(WM) RM959(EM)

# ELECTRIC OVEN

## ELECTRIC OVEN

### MEO-GLAMO 45RC

- Power: 1800W
- Capacity: 45L
- 6 function selectors: OFF, both upper & lower heating with convection, upper heating with convection, both upper & lower heating, upper heating with rotisserie and both upper & lower heating with convection rotisserie.
- 100°C – 250°C adjustable temperature selector for various cooking functions
- Stainless steel heating elements
- With Inner lamp
- 60 minutes timer with bell ring
- Accessories: 2 pcs enamel baking tray, rotisserie set, wire rack, crumb tray and tray handle.

**RM439(WM) RM459(EM)**  
RCP: RM639(WM) RM659(EM)



## ELECTRIC OVEN

### MEO-GLAMO 23B

- Power: 1380W
- Capacity: 21L
- 4 function selector: OFF, both upper & lower heating, upper heating and lower heating
- 60min Timer With Bell Ring
- Accessories: 2pc Baking tray, wire ack & tray handle
- 100°C-250°C Adjustable Temperature Selector for Various Cooking Functions
- Stianless Steel Heating Element

**RM199(WM) RM209(EM)**  
RCP: RM269(WM) RM279(EM)

## ELECTRIC OVEN

### MEO-HC26C

- Power: 1500W
- Capacity: 26 Liter
- 6 function selector: OFF, upper heating, lower heating, both upper & lower heating, upper heating with convection and both upper & lower heating with convection
- 100°C-250°C Adjustable Temperature Selector for Various Cooking Functions
- 60min Timer With Bell Ring
- Stianless Steel Heating Element
- With Indicator Light
- Accessories: 1pc Bake Tray, 1pc Wire Rack & Tray Handle

**RM219(WM) RM229(EM)**  
RCP: RM339(WM) RM349(EM)



# AIR FRYER OVEN



AIR FRY



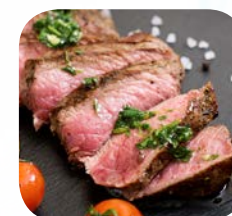
BROIL



BAKE



TOAST



GRILL



ROAST



## AIR FRYER OVEN

### MAO-VORTEX PRO 22

- Power: 1500W
- Capacity: 22L
- 6 Functions: Air Fry, Broil, Bake, Toast, Convection Grill, Convection Roast.
- 65°C to 230°C Adjustable Temperature Selector for Various Cooking functions.
- 60min Timer With Bell Ring
- Equipped with 6pcs Stainless Steel heating elements and Large turbo convection fan (SAVE UP TO 50% cooking time.)
- Auto shut off safety protection. (When door is open during cooking it will stop operation)
- Oil-free cooking
- Inner oven lamp
- Accessories: Baking Tray, Wire Rack and Air Fry Basket

**RM499(WM) RM509(EM)**  
RCP: RM899(WM) RM909(EM)

**NEW**

save up to  
**44%**



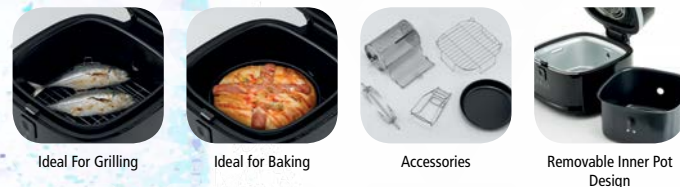
## AIR FRYER



### AIR-FRYER MAF-OPTIMAL 8

- Power: 1200W
- Capacity: 8.0L
- Removable inner pot with non-stick coating
- With rapid air circulation system
- Temperature control 80°C to 210°C
- With timer up to 99 minutes

**RM559(WM) RM570(EM)**  
RCP: RM779(WM) RM790(EM)



save  
up to  
**28%**



Frying without Oil

Ideal for Roasting

Ideal for Grilling



### AIR-FRYER MAF-C607

- Power: 1300W
- Capacity: 2.8L
- Temperature control 80° – 200°C
- With timer up to 60 minutes
- Removable pot with non-stick coating
- With rapid air circulation system
- Overheat protection and handle button cover

**RM339(WM) RM345(EM)**  
RCP: RM449(WM) RM455(EM)



### AIR-FRYER MAF-EROS 8

- Power: 1800W
- Capacity: 8.0L
- Temperature control 80°C–200°C
- With timer up to 60 minutes
- Presets control with digital display
- With non-stick coating pot
- Transparent window for easy visual cooking
- With rapid air circulation system
- With sensor touch panel
- Overheat protection

**RM559(WM) RM570(EM)**  
RCP: RM779(WM) RM790(EM)

## FOOD BLENDER



### POWER BLENDER MPB-MAXIMUS 15

- Power rating: 1400W
- Capacity: 2.0L Tritan Jar
- High Speed Blender with 3 Pre-programmed Setting
- With maximum RMP: 32000

**RM579(WM) RM589(EM)**  
RCP: RM779(WM) RM789(EM)



3 Mode Speeds  
(Ice Crushing, Smoothie  
Blending & Soup Blending)



6 Stainless Steel Blades



Tamper for Even Mixing



2000ml Tritan Blending Jar



Juice



Soup



Smoothies



Paste

save  
up to  
**32%**



### FOOD BLENDER MBL-401WG

- Power rating: 400W
- Capacity: 1.5L
- 2 speeds with pulse function
- With Dry mill grinder
- With safety switch
- With Circuit Breaker Protection

**RM99(WM) RM103(EM)**  
RCP: RM145(WM) RM149(EM)

## HAND MIXER & STAND MIXER



### HAND MIXER MHM-MIXX 300

- Power rating: 300W
- 6 speeds with Turbo function
- With individual eject button
- Accessories: 2pcs stainless steel beater, 2pcs dough hook and 1pc of whisk
- With accessories storage box

**RM99(WM) RM100(EM)**  
RCP: RM119(WM) RM120(EM)

save  
up to  
**39%**



### STAND MIXER MSM-NC400HM

- Power rating: 400W
- Capacity: 3.5L mixer bowl
- 5 speeds with turbo function

**RM219(WM) RM225(EM)**  
RCP: RM309(WM) RM315(EM)



### STAND MIXER MSM-NC300HM

- Power rating: 300W
- Capacity: 3.4L mixer bowl
- 5 speeds with turbo function
- With automatic rotated bowl

**RM155(WM) RM161(EM)**  
RCP: RM219(WM) RM225(EM)



### STAND MIXER MSM-SB1500

- Power rating: 1500W powerful motor, low noise
- 6.7L brushed stainless steel bowl
- Variable 8 stepless speed and pulse function

**RM1449(WM) RM1459(EM)**  
RCP: RM2029(WM) RM2039(EM)



Splashguard with  
Convenient  
Ingredients Inlet



Batter Mixing



Egg Beating



Dough Kneading



### STAND MIXER MSM-MIXTE 12

- Power rating: 1200W powerful motor
- 5.5L Stainless Steel Bowl
- Stepless speed and pulse function
- Non-slipping rubber feet
- Accessories: Whisk, Beater and Hook

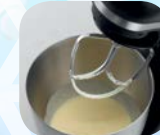
**RM619(WM) RM629(EM)**  
RCP: RM1019(WM) RM1029(EM)



Splash Guard with  
Convenient  
Ingredient Inlet



Dough Kneading



Batter Mixing



Egg Whisking

## FOOD DEHYDRATOR



Excellent for dried vegetables



Ideal for dried spices



Superb for dried flowers



Perfect for dried fruits



Great for dried meats



### FOOD DEHYDRATOR MFD-A9

- Power rating: 420W – 500W
- Adjustable trays' height for different size of fruits
- Safety overheating protection
- Adjustable temperature for different foods
- Built-in ventilator for freshness & nutrition
- Dishwasher-safe trays & cover
- 5-interchangeable trays
- Ideal for DIY healthy & Natural snacks

**RM229(WM) RM239(EM)**  
RCP: RM309(WM) RM319(EM)

save  
up to  
**26%**



## RICE COOKER



save  
up to  
**37%**

- RICE COOKER  
MRC-TD618NS**
- Power rating: 700W
  - Capacity: 1.8L
  - Stainless steel lid
  - Non-stick coated inner pot
  - Aluminium steaming basket

**RM119(WM) RM125(EM)**  
RCP: RM169(WM) RM175(EM)



- RICE COOKER  
MRC-TD610NS**
- Power rating: 400W
  - Capacity: 1.0L
  - Stainless steel lid
  - Non-stick coated inner pot
  - Aluminium steaming basket

**RM99(WM) RM100(EM)**  
RCP: RM139(WM) RM140(EM)



- RICE COOKER  
MRC-TC28**
- Power rating: 1000W
  - Capacity: 2.8L
  - Micro switch control
  - With steam tray

**RM149(WM) RM155(EM)**  
RCP: RM209(WM) RM215(EM)



- JAR RICE COOKER  
MRC-2310J**
- Power rating: 400W
  - Capacity: 1.0L
  - Non-stick coated inner pot
  - With detachable steam vent
  - With steam tray

**RM115(WM) RM116(EM)**  
RCP: RM159(WM) RM160(EM)



- JAR RICE COOKER  
MRC-2318J**
- Power rating: 700W
  - Capacity: 1.8L
  - Non-stick coated inner pot
  - With detachable steam vent
  - With steam tray

**RM139(WM) RM145(EM)**  
RCP: RM189(WM) RM195(EM)



- RICE COOKER  
MRC-TC18**
- Power rating: 700W
  - Capacity: 1.8L
  - Micro switch control
  - With steam tray

**RM109(WM) RM115(EM)**  
RCP: RM159(WM) RM165(EM)



- RICE COOKER  
MRC-TC10**
- Power rating: 400W
  - Capacity: 1.0L
  - Micro switch control
  - With steam tray

**RM89(WM) RM90(EM)**  
RCP: RM129(WM) RM130(EM)



- COMMERCIAL RICE COOKER  
MCR-VAST 10**
- Power rating: 2800W
  - Capacity: 10L
  - Large control panel with 1 button easy operation
  - Stainless steel large handle lid with holder for hung on the side of the pot
  - Removable non-stick inner pot
  - With keep warm functions
  - With overheat cut-off protection
  - Max rice volume: 7.5kgs & min rice volume 2kgs; Max. up to 50 persons

**RM439(WM) RM459(EM)**  
RCP: RM699(WM) RM719(EM)



Convenient Lid Holder



Accessories

## COFFEE MAKER & TOASTER

save  
up to  
**24%**



- COFFEE MAKER  
MCM-NB12C**
- Power rating: 900W
  - Capacity: 1.5L
  - Anti-Drip Protection
  - Non-Stick Coating Heating Plate
  - Permanent Removable Filter For Easy Cleaning
  - Ergonomical Protective

**RM119(WM) RM123(EM)**  
RCP: RM159(WM) RM163(EM)



- TOASTER  
MTS-22A**
- Power rating: 750W
  - Auto bread centralizing feature
  - Wider slot for thicker breads
  - With dust cover
  - With defrost, reheat, cancel functions & 7 levels of browning control.
  - With crumb tray

**RM75(WM) RM76(EM)**  
RCP: RM99(WM) RM100(EM)

## JUICE EXTRACTOR

save  
up to  
**22%**

- JUICE EXTRACTOR  
MJE-SC160W**
- Power rating: 600W
  - 65mm diameter of feeding tube for whole apple.
  - 1.5L pulp container & 550ml juice cup
  - Stainless steel housing
  - Two speed control section

**RM199(WM) RM200(EM)**  
RCP: RM249(WM) RM250(EM)



- JUICE EXTRACTOR  
MJE-AA05W**
- Power rating: 250W
  - Large feeding tube
  - High juice extracting rate
  - Stainless steel filter

**RM109(WM) RM110(EM)**  
RCP: RM139(WM) RM140(EM)



## ELECTRIC KETTLE & JUG KETTLE

save  
up to  
**43%**

- ELECTRIC KETTLE  
MEK-4802SSCL**
- Power rating: 1850W – 2200W
  - Capacity: 4.8 Liter
  - Foldable Handle
  - SUS304 Stainless Steel Seamless Inner Pot
  - Concealed Heating Element
  - Cordless 360° Rotational Base with Safety Boil Dry Protection

**RM179(WM) RM180(EM)**  
RCP: RM239(WM) RM240(EM)



- JUG KETTLE  
MJK-8017LS**
- Power rating: 1850W – 2200W
  - Capacity: 1.7 Liter
  - Swivel base cordless
  - SUS304 Stainless Steel Seamless Inner Pot
  - Concealed Heating Element
  - Removable Filter For Easy Cleaning

**RM139(WM) RM140(EM)**  
RCP: RM219(WM) RM220(EM)

- JUG KETTLE  
MJK-1010L**
- Power rating: 1000W – 1200W
  - Capacity: 1.0 Liter
  - Swivel base cordless
  - Concealed Heating Element

**RM79(WM) RM80(EM)**  
RCP: RM109(WM) RM110(EM)



- JUG KETTLE  
MJK-1017L**
- Power rating: 1850W – 2200W
  - Capacity: 1.7 Liter
  - Swivel base cordless
  - Concealed Heating Element

**RM89(WM) RM90(EM)**  
RCP: RM129(WM) RM130(EM)



- JUG KETTLE  
MJK-917**
- Rated wattage: 1850-2200W
  - Capacity: 1.7L
  - Removable Filter For Easy Cleaning
  - Stainless Steel Heating Element
  - ON/OFF Switch with Light Indicator

**RM39(WM) RM40(EM)**  
RCP: RM69(WM) RM70(EM)



## PAN GRILL

save  
up to  
**29%**

- PAN GRILL  
MPG-2898**
- Power rating: 1300W
  - Detachable non-stick heating plate
  - Oil free cooking for healthier meals

**RM199(WM) RM205(EM)**  
RCP: RM269(WM) RM275(EM)



- PAN GRILL  
MPG-DA898NS**
- Power rating: 1500-1800W
  - Dual temperature control
  - Oil free cooking for healthier meals

**RM269(WM) RM275(EM)**  
RCP: RM379(WM) RM385(EM)





## THERMO POT



### THERMO POT MTP-266TSS

- Power rating: 750-892W
- Capacity: 6.0L
- SUS304 Stainless steel inner pot
- With safety lock function
- 5 Temperature control: 90°C, 80°C, 60°C, 40°C and Auto Cool
- Stainless steel steam vent
- Screwless design lid
- Unique base designed inner pot

**RM215(WM) RM221(EM)**  
RCP: RM329(WM) RM335(EM)



### THERMO POT MTP-TC160L

- Power rating: 750W
- Capacity: 6.0L
- SUS304 Stainless steel inner pot
- 360° Swivel base
- Two-way Dispenser (Button/Cup)
- With auto reboil & keep warm function

**RM175(WM) RM181(EM)**  
RCP: RM269(WM) RM275(EM)



### THERMO POT MTP-350TS

- Power rating: 750-892W
- Capacity: 5L
- 'SUS 304' stainless steel interior pot
- Screwless design lid
- Stainless steel steam venting hole
- Unique base designed inner pot

**RM195(WM) RM201(EM)**  
RCP: RM289(WM) RM295(EM)



save  
up to  
**35%**

## MULTI COOKER



Easy Stir Fry



\*Non-Stick Grill Pan



Ideal for Deep Frying



\*Stainless Steel Steam Tray for Easy Steaming



Ideal for Steamboat with auto cut-off to prevent overheating



### MULTI COOKER MMC-3400A\*

- Power rating: 1300W
- Capacity: 4.0L
- Auto cut-off to prevent overheating
- "SUS 304" Stainless steel inner pot
- With grill pan & steam tray

**RM219(WM) RM225(EM)**  
RCP: RM319(WM) RM325(EM)

save  
up to  
**31%**

### MULTI COOKER MMC-3500

- Power rating: 1000W
- Capacity: 5.0L
- Auto cut-off to prevent overheating
- Ideal for Steamboat, Stir Frying and Deep Frying
- Removable non-stick coated inner pot
- Tempered glass lid

**RM169(WM) RM175(EM)**  
RCP: RM229(WM) RM235(EM)



### MULTI COOKER MMC-3300A

- Power rating: 1000W
- Capacity: 3.0L
- Auto cut-off to prevent overheating
- "SUS 304" Stainless steel inner pot

**RM149(WM) RM155(EM)**  
RCP: RM199(WM) RM205(EM)



## GAS STOVE



### DOUBLE GAS STOVE MGS-8312G

- 120mm x 120mm Black brass burner head
- Glass top for elegant look & easy cleaning
- High efficiency burner head for powerful flame
- Enamel trivet for durability
- Stainless Steel Body
- Piezo ignition

**RM289(WM) RM295(EM)**  
RCP: RM399(WM) RM405(EM)



### DOUBLE GAS STOVE MGS-SC9516CD

- 135mm x 135mm Copper Burner Head
- 100% Stainless Steel Body
- Elegant Design
- High Efficiency Burner Head for Powerful Flame
- Duplicast Iron Trivets
- Double Pipe
- Piezo ignition

**RM299(WM) RM305(EM)**  
RCP: RM429(WM) RM435(EM)

### DOUBLE GAS STOVE MGS-8866G

- 130mm x 130mm Black brass burner head
- Glass top for elegant look & easy cleaning
- High efficiency burner head for powerful flame
- Duplicast Iron Trivets
- Stainless Steel Body
- Piezo ignition

**RM329(WM) RM335(EM)**  
RCP: RM439(WM) RM445(EM)



### DOUBLE GAS STOVE MGS-7212S

- 120mm x 120mm stainless steel burner head
- Stainless steel top
- Double pipe
- Enamel trivet for durability
- Piezo ignition

**RM149(WM) RM155(EM)**  
RCP: RM199(WM) RM205(EM)



### DOUBLE GAS STOVE MGS-9313CD

- 130mm x 130mm Copper Brass Burner Head
- 100% Stainless Steel Body
- Duplicast Iron Trivets for Durability
- Elegant Design & Easy Cleaning
- Double Pipe
- Piezo ignition

**RM289(WM) RM295(EM)**  
RCP: RM399(WM) RM405(EM)



### DOUBLE GAS STOVE MGS-5515

- 130mm x 150mm Iron burner head
- 100% Stainless steel body
- Elegant design
- High efficiency burner head for powerful flame
- Piezo ignition

**RM289(WM) RM295(EM)**  
RCP: RM389(WM) RM395(EM)



### DOUBLE GAS STOVE MGS-7313S

- 130mm x 130mm stainless steel burner head
- Stainless steel top
- Double pipe
- Double 8 jets burner
- Piezo ignition

**RM169(WM) RM175(EM)**  
RCP: RM229(WM) RM235(EM)



## FOOD STEAMER



### FOOD STEAMER MFS-29 NUTRISTEAM (WH) MFS-29 NUTRISTEAM (BK)

- Power: 1600W
- Capacity: 28L
- Come with double heaters
- Rice steaming container and water refill cup
- Stackable steam tray for easy storage
- Exterior water refill funnel with visible water level indicator
- Anti-dry thermostat protection
- 2 levels structure for convenient cooking
- 60 minutes timer with bell

**RM319(WM) RM329(EM)**  
RCP: RM579(WM) RM589(EM)



save  
up to  
**45%**



Stackable for easy Storage



Removable Tray for Larger Steaming Compartment



Individual Steaming Compartment



Convenient Refill



Accessories





## CERAMIC COOKER & INDUCTION COOKER



Ideal for Stainless Steel Grill Plate or Pot



Ideal for Glassware



Ideal for Clay Pots

### CERAMIC COOKER MCC-2002

- Power rating: 2000W
- With stainless steel grill plate

**RM249(WM) RM250(EM)**  
RCP: RM379(WM) RM380(EM)

save  
up to  
**34%**



### INDUCTION COOKER MIC-2520

- Power rating: 2000W
- 8 cooking functions selection: Hot pot, Fry, Stir fry, BBQ, Soup, Rice, Milk and Water.
- LED Screen Display
- Over-heat Protection System

**RM229(WM) RM235(EM)**  
RCP: RM319(WM) RM325(EM)



## UPRIGHT FREEZER & MINI BAR



### UPRIGHT FREEZER MUF-DC88

- Rated wattage: 130W
- Capacity: 85L
- CFC Free / Direct Cool
- Easy to clean
- Adjustable thermostat
- Mechanical temperature control
- High energy efficiency compressor
- Freezer temperature: -14°C~-24°C
- With 4 freezer compartment drawers
- Compressor: 5 Years warranty

**RM1199(WM) RM1249(EM)**  
RCP: RM1719(WM) RM1769(EM)



### UPRIGHT FREEZER MUF-DC168

- Rated wattage: 130W
- Capacity: 163L
- CFC Free / Direct Cool
- Easy to clean
- Adjustable thermostat
- Mechanical temperature control
- High energy efficiency compressor
- Freezer temperature: -14°C~-24°C
- With 6 freezer compartment drawers
- Compressor: 5 Years warranty

**RM1499(WM) RM1599(EM)**  
RCP: RM2659(WM) RM2759(EM)



**NEW**

### UPRIGHT FREEZER MUF-1280L

- Rated wattage: 210W
- Capacity: 285L
- CFC Free / Frost Free
- Deep and Quick Freezing
- High energy efficiency compressor
- Easy to clean
- Adjustable thermostat
- With 7 freezer compartments
- With Key lock
- Freezer Temperature: 0°C ~ -18°C
- Compressor: 5 Years Warrantys

**RM2599(WM) RM2739(EM)**  
RCP: RM4309(WM) RM4449(EM)

save  
up to  
**44%**



### MINI BAR MMB-NB62LSL

- Capacity: 50L
- CFC Free
- Adjustable thermostat
- Product Dimension(mm): 475L x 450D x 487H

**RM529(WM) RM549(EM)**  
RCP: RM859(WM) RM879(EM)

## CHEST FREEZER



### CHEST FREEZER MCF-7307L

- Product Dimension(mm): 2030L x 725D x 910H
- Capacity: 700L
- CFC Free
- 2 Doors
- Durable Epoxy Inner
- Fridge or Freezer Adjustable thermostat
- Fridge Temperature: 2°C to 10°C
- Freezer Temperature: -10°C to -20°C

**RM2959(WM) RM3269(EM)**  
RCP: RM5999(WM) RM6309(EM)

### CHEST FREEZER MCF-6307L

- Product Dimension(mm): 1800L x 760D x 827H
- Capacity: 600L
- CFC Free
- 2 Doors
- Durable Epoxy Inner
- Fridge or Freezer Adjustable thermostat
- Fridge Temperature: 5°C to -3°C
- Freezer Temperature: -8°C to -24°C

**RM2309(WM) RM2549(EM)**  
RCP: RM5029(WM) RM5269(EM)

### CHEST FREEZER MCF-5507L

- Product Dimension(mm): 1600L x 765D x 826H
- Capacity: 520L
- CFC Free
- 2 Doors
- Durable Epoxy Inner
- Fridge or Freezer Adjustable thermostat
- Fridge Temperature: 5°C to -3°C
- Freezer Temperature: -8°C to -24°C

**RM2259(WM) RM2479(EM)**  
RCP: RM4399(WM) RM4619(EM)

### CHEST FREEZER MCF-4507L

- Product Dimension(mm): 1440L x 680D x 826H
- Capacity: 423L
- CFC Free
- Durable Epoxy Inner
- Fridge or Freezer Adjustable thermostat
- Fridge Temperature: 5°C to -3°C
- Freezer Temperature: -8°C to -24°C

**RM1789(WM) RM1959(EM)**  
RCP: RM3609(WM) RM3779(EM)



### CHEST FREEZER MCF-3507L

- Product Dimension(mm): 1100L x 680D x 826H
- Capacity: 303L
- CFC Free
- Durable Epoxy Inner
- Fridge or Freezer Adjustable thermostat
- Fridge Temperature: 5°C to -3°C
- Freezer Temperature: -8°C to -24°C

**RM1349(WM) RM1479(EM)**  
RCP: RM2929(WM) RM3059(EM)

### CHEST FREEZER MCF-3007L

- Product Dimension(mm): 950L x 680D x 826H
- Capacity: 253L
- CFC Free
- Durable Epoxy Inner
- Fridge or Freezer Adjustable thermostat
- Fridge Temperature: 5°C to -3°C
- Freezer Temperature: -8°C to -24°C

**RM1349(WM) RM1469(EM)**  
RCP: RM2829(WM) RM2949(EM)

### CHEST FREEZER MCF-1178L

- Product Dimension(mm): 580L x 520D x 830H
- Capacity: 116L
- CFC Free
- Durable Epoxy Inner
- Fridge or Freezer Adjustable thermostat
- Fridge Temperature: 5°C to -3°C
- Freezer Temperature: -8°C to -24°C

**RM839(WM) RM899(EM)**  
RCP: RM1669(WM) RM1729(EM)

### CHEST FREEZER MCF-0958L

- Product Dimension(mm): 530L x 440D x 830H
- Capacity: 80L
- CFC Free
- Durable Epoxy Inner
- Fridge or Freezer Adjustable thermostat
- Fridge Temperature: 5°C to -3°C
- Freezer Temperature: -8°C to -24°C

**RM759(WM) RM799(EM)**  
RCP: RM1459(WM) RM1499(EM)

### CHEST FREEZER MCF-0658L

- Product Dimension(mm): 532L x 455D x 588H
- Capacity: 60L
- CFC Free
- Durable Epoxy Inner
- Fridge or Freezer Adjustable thermostat
- Fridge Temperature: 0°C to 10°C
- Freezer Temperature: -1°C to -20°C

**RM719(WM) RM749(EM)**  
RCP: RM1279(WM) RM1309(EM)

### CHEST FREEZER MCF-EVEREST 10

- Product Dimension(mm): 590L x 545D x 845H
- Capacity: 105L
- CFC Free
- Durable Epoxy Inner
- Coated Wire Basket
- Fridge or Freezer Adjustable thermostat
- Fridge Temperature: 2°C to 8°C
- Freezer Temperature: -10°C to -24°C

**RM909(WM) RM969(EM)**  
RCP: RM1669(WM) RM1729(EM)

### CHEST FREEZER MCF-EVEREST 15

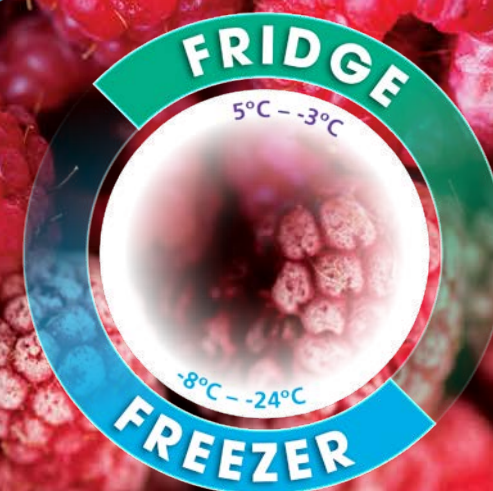
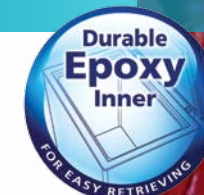
- Product Dimension(mm): 705L x 596D x 840H
- Capacity: 150L
- CFC Free
- Durable Epoxy Inner
- Coated Wire Basket
- Fridge or Freezer Adjustable thermostat
- Fridge Temperature: 2°C to 8°C
- Freezer Temperature: -10°C to -24°C

**RM1129(WM) RM1199(EM)**  
RCP: RM2239(WM) RM2309(EM)

### CHEST FREEZER MCF-EVEREST 20

- Product Dimension(mm): 906L x 600D x 836H
- Capacity: 205L
- CFC Free
- Durable Epoxy Inner
- Coated Wire Basket
- Fridge or Freezer Adjustable thermostat
- Fridge Temperature: 2°C to 8°C
- Freezer Temperature: -10°C to -24°C

**RM1249(WM) RM1339(EM)**  
RCP: RM2629(WM) RM2719(EM)



save  
up to  
**54%**



## GLASS DOOR CHEST FREEZER

### GLASS DOOR CHEST FREEZER MCF-G456L

- Product Dimension(mm): 1434L x 651D x 800H
- Capacity: 456L
  - CFC Free
  - Epoxy Inner
  - With Key Lock
  - High Energy Efficiency Compressor
  - Fridge or Freezer Adjustable Thermostat
  - With 2 Baskets
  - Fridge Temperature: 0°C to 10°C
  - Freezer Temperature: -1°C to -18°C

**RM2519(WM) RM2689(EM)**  
RCP: RM4029(WM) RM4199(EM)



save  
up to  
**37%**

### GLASS DOOR CHEST FREEZER MCF-G336L

- Product Dimension(mm): 1034L x 651D x 800H
- Capacity: 336L
  - CFC Free
  - Epoxy Inner
  - With Key Lock
  - High Energy Efficiency Compressor
  - Fridge or Freezer Adjustable Thermostat
  - With 2 Baskets
  - Fridge Temperature: 0°C to 10°C
  - Freezer Temperature: -1°C to -18°C

**RM2189(WM) RM2309(EM)**  
RCP: RM3459(WM) RM3579(EM)



## CHILLER SHOWCASE

### CHILLER SHOWCASE MCS-198

- Rated wattage: 230W
- Capacity: 170L
- Frost Free
- Double tempered Glass Door
- With Key Lock
- Inner dimension(mm): 450W x 360D x 960H
- Product dimension(mm): 545W x 580D x 1342H
- Temperature: 0°C to 10°C
- Self-evaporation water tray
- Each shelf is able to hold up to 20kgs

**RM1699(WM) RM1789(EM)**  
RCP: RM2789(WM) RM2879(EM)



### CHILLER SHOWCASE MCS-298

- Rated wattage: 240W
- Capacity: 250L
- Frost Free
- Double tempered Glass Door
- With Key Lock
- Inner dimension(mm): 450W x 360D x 1320H
- Product dimension(mm): 545W x 580D x 1725H
- Temperature: 0°C to 10°C
- Self-evaporation water tray
- Each shelf is able to hold up to 20kgs

**RM2199(WM) RM2319(EM)**  
RCP: RM3569(WM) RM3689(EM)



### CHILLER SHOWCASE MCS-488

- Rated wattage: 330W
- Capacity: 430L
- Frost Free
- Inner dimension(mm): 523W x 510D x 1565H
- Product dimension(mm): 606W x 665D x 2000H
- Temperature: 0°C to 10°C
- Each shelf is able to hold up to 36kgs

**RM3399(WM) RM3579(EM)**  
RCP: RM5099(WM) RM5279(EM)



### CHILLER SHOWCASE MCS-338

- Rated wattage: 250W
- Capacity: 288L
- Frost Free
- Inner dimension(mm): 489W x 481D x 1176H
- Product dimension(mm): 578W x 605D x 1824H
- Temperature: 0°C to 10°C
- Each shelf is able to hold up to 36kgs

**RM2799(WM) RM2939(EM)**  
RCP: RM4299(WM) RM4439(EM)



## CEILING FAN

### CEILING FAN

#### MFC-EURUS 360 BK MFC-EURUS 360 WH

- Power: 80W
- Blade Size: 60 inch
- Durable 100% copper wire motor
- Built-in Safety Thermal Fuse
- Built-in Safety Wire with Locks for Extra Protection
- Corrosion Resistant Fan Blade
- 5 Speeds Control Regulator

**RM129(WM) RM133(EM)**  
RCP: RM205(WM) RM209(EM)



save  
up to  
**37%**

## CIRCULATION FAN

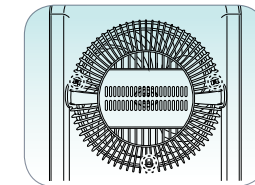
### CIRCULATION FAN MFQ-D3RC

- Power: 105W
- Fan Blades: Ø8"
- Three Independent fan with 3 speed control.
- Adjustable tilt position.
- Auto Oscillation for left and right.
- Manual Oscillation for up and down.
- Timer setting up to 7 hours
- With remote control
- Easy dismantle for cleaning

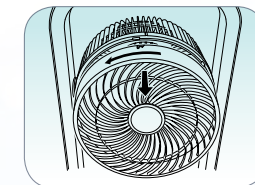
**RM439(WM) RM459(EM)**  
RCP: RM619(WM) RM639(EM)



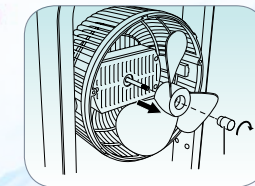
### CARE & CLEANING



Remove the power plug from the power supply before disassembling the fan for cleaning. Remove the three screws from the back cover.



Twist the front cover to the left to detach it.



Twist the fan blade screw to the right and detach the fan blade. Proceed to clean the fan blade.

save  
up to  
**32%**

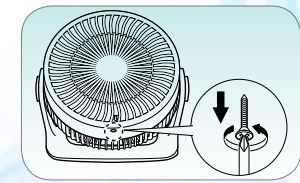
### CIRCULATION FAN

#### MFQ-SB35W (PK) BREEZER MFQ-SB35W (GR) BREEZER MFQ-SB35W (BL) BREEZER

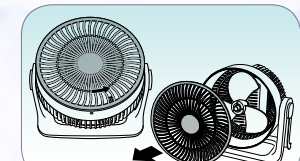
- Power: 35W
- Fan Blades: Ø8"
- 3 Speeds Hi / Mid. / Low
- Manual Oscillation up and down
- Adjustable tilt position.
- Easy dismantle for cleaning

**RM95(WM) RM96(EM)**  
RCP: RM139(WM) RM140(EM)

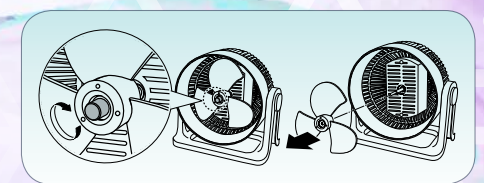
### CARE & CLEANING



Remove the power plug from the power supply before disassembling the fan for cleaning. Remove the screw under the front cover.



Twist the front cover to the left to detach it.



Twist the fan blade screw to the right and detach the fan blade. Proceed to clean the fan blade.





## TABLE & WALL FAN



**TABLE FAN**  
**MTF-12T1**

- Power rating: 45W
- Powerful air flow with 12" AS fan blade
- Thermal safety fuse
- High Quality & Durable Motor
- Smooth Oscillation
- 3 Speed Mode

**RM95(WM) RM101(EM)**  
RCP: RM149(WM) RM155(EM)



**TABLE FAN**  
**MTF-16T1**

- Power rating: 55W
- Powerful air flow with 16" AS fan blade
- Thermal safety fuse
- High Quality & Durable Motor
- Smooth Oscillation
- 3 Speed Mode

**RM105(WM) RM111(EM)**  
RCP: RM179(WM) RM185(EM)



**WALL FAN**  
**MWF-NC168MS**

- Power rating: 45W
- Thermal safety fuse
- High Quality & Durable Motor
- Smooth Oscillation
- 3 Speed Mode

**RM179(WM) RM189(EM)**  
RCP: RM239(WM) RM249(EM)

## VENTILATION FAN



**VENTILATION FAN**  
**MVF-CA12XS**

- Power rating: 30W
- Ceiling Mounted Type
- For Shop, Office Room, Living Room & Kitchen
- Elegant Design
- Energy Efficient
- Fan size: 120mm

**RM119(WM) RM120(EM)**  
RCP: RM169(WM) RM170(EM)



**VENTILATION FAN**  
**MVF-WA80**

- Power rating: 30W
- Wall Mounted Type
- For Shop, Office Room, Living Room & Kitchen
- Energy Efficient
- Powerful Motor
- Fan size: 200mm

**RM89(WM) RM90(EM)**  
RCP: RM119(WM) RM120(EM)

**VENTILATION FAN**  
**MVF-CB12XW**

- Power rating: 30W
- Ceiling Mounted Type
- For Shop, Office Room, Living Room & Kitchen
- Elegant Design
- Energy Efficient
- Fan size: 120mm

**RM109(WM) RM110(EM)**  
RCP: RM159(WM) RM160(EM)

**VENTILATION FAN**  
**MVF-WA100**

- Power rating: 35W
- Wall Mounted Type
- For Shop, Office Room, Living Room & Kitchen
- Energy Efficient
- Powerful Motor
- Fan size: 250mm

**RM99(WM) RM100(EM)**  
RCP: RM139(WM) RM140(EM)



**VENTILATION FAN**  
**MVF-WA120**

- Power rating: 45W
- Wall Mounted Type
- For Shop, Office Room, Living Room & Kitchen
- Elegant Design
- Powerful Motor
- Fan size: 300mm

**RM109(WM) RM115(EM)**  
RCP: RM159(WM) RM165(EM)

## AIR COOLER

save  
up to  
**34%**

**AIR COOLER**  
**MAC-COOL7**

- Power: 90W
- Large water tank capacity: 35L
- Air flow: 3000m³/hr
- Suitable for room size up to 20-30m²
- 3-Sided Durable honeycomb filter for Max Cooling with dust proof cover
- LED Display With touch Control
- Timer Setting Function Up to 12 Hours
- 2 Cooler Packs

**RM739(WM) RM769(EM)**  
RCP: RM1079(WM) RM1109(EM)



**AIR COOLER**  
**MAC-AMPLEFLOW 18**

- Power: 600W
- Large water tank capacity: 120L
- Air flow: 16,000m³/hr
- Suitable for room size up to 90m²
- 3-Sided Durable honeycomb filter for Max Cooling with dust proof cover

**RM2009(WM) RM2159(EM)**  
RCP: RM2889(WM) RM3039(EM)



**AIR COOLER**  
**MAC-CX12**

- Power: 65W
- Large water tank capacity: 12L
- Air flow: 1150m³/hr
- Suitable for room size up to 20m²
- Durable Honeycomb Filter with Dust Proof Cover
- 4 Cooler Packs

**RM339(WM) RM349(EM)**  
RCP: RM499(WM) RM509(EM)



**AIR COOLER**  
**MAC-COOL3**

- Power: 100W
- Water tank capacity: 10L
- Air flow: 1600m³/hr
- Suitable for room size up to 25m²
- With Ionizer
- 2 Cooler Packs

**RM629(WM) RM649(EM)**  
RCP: RM929(WM) RM949(EM)



**AIR COOLER**  
**MAC-COOL1B**

- Power: 130W
- Water tank capacity: 10L
- Air flow: 1200m³/hr
- Suitable for room size up to 20m²
- Durable Honeycomb Filter with Dust Proof Cover
- With Ionizer
- 2 Cooler Packs

**RM399(WM) RM409(EM)**  
RCP: RM609(WM) RM619(EM)



**AIR COOLER**  
**MAC-COOL10A**

- Power: 220W
- Water tank capacity: 60L
- Air flow: 2800m³/hr
- Suitable for room size up to 80m²

**RM1099(WM) RM1179(EM)**  
RCP: RM1669(WM) RM1749(EM)



**AIR COOLER**  
**MAC-COOL1A**

- Power: 75W
- Water tank capacity: 5L
- Air flow: 1150m³/hr
- Suitable for room size up to 20-25m² (215 ~ 269 sq ft)

**RM339(WM) RM349(EM)**  
RCP: RM479(WM) RM489(EM)



## PORTABLE AIR COND



### PORTABLE AIR-COND MAC-093 Lite

- Cooling capacity: 9000btu/hr (2.61kw)
- Suitable for room size up to 14-20m²
- Washable filters
- Auto left & right swing louvers
- Automatic Evaporative system
- 3 in 1 function of Cooling/Dehumidifying/Fan
- High & Low Fan Speeds
- 24 Hour ON/OFF Timer
- With Remote Control

**RM1139(WM) RM1159(EM)**  
RCP: RM2209(WM) RM2229(EM)



### PORTABLE AIR-COND MAC-121 SIERRAIRE

- Cooling capacity: 12000btu/hr (3500W)
- Suitable for room size up to 25-30m²
- Auto Up/Down Swing Louvers
- Automatic Evaporative System
- 3-in-1 Function of Cooling, Dehumidifying and Fan
- With LOW/MID/HIGH Fan Speeds
- 24 hour ON/OFF Timer
- With Remote Control

**RM1699(WM) RM1729(EM)**  
RCP: RM3029(WM) RM3059(EM)

**NEW**



### PORTABLE AIR-COND MAC-091 Feather Lite

- Cooling capacity: 9000btu/hr (2.61kw)
- Suitable for room size up to 14m²
- Washable filters
- Self-Evaporative system & drain outlet design
- 4 Modes – Cool, Fan, Dehumidifying & Sleep
- High & Low Fan Speeds
- 24 Hour ON/OFF Timer

**RM1139(WM) RM1159(EM)**  
RCP: RM2209(WM) RM2229(EM)

save  
up to  
**48%**

## STEAM GENERATOR & GARMENT STEAMER



### STEAM GENERATOR MSG-27MAXIcare

- Power: 2000-2400W
- 5 bar Steam pressure
- 1.5L Removable water tank
- Steam rate max 100g/min, ECO steam 60g/min
- With cord winder
- Adjustable steam rate and temperature
- Anti-slip iron rest
- No water alarm
- Water tank refill indicator

**RM529(WM) RM535(EM)**  
RCP: RM799(WM) RM805(EM)



Powerful Steam



Lock & Carry



With Calc Clean Function



Large Removable Water Tank for Easy Refilling



Non-stick Ceramic Soleplate

save  
up to  
**34%**

### GARMENT STEAMER MSI-GB206

- Power: 1350-1650W
- Stainless Steel Steam Panel
- Powerful Steam
- Translucent 2.0L water tank
- Steam rate 32g/min

**RM249(WM) RM259(EM)**  
RCP: RM349(WM) RM359(EM)



Stainless Steel Steam Panel with Powerful Steam



Little Helper – for Easy Ironing



Rotatable & Collapsible Hanger



Fabric Brush



Accessories



## FULLY AUTO WASHING MACHINE



### FULLY AUTO WASHING MACHINE MWM-11 SAPPHIRE

- Washing Capacity: 11.0Kg
- Spinning Capacity: 11.0Kg
- Hot Air Dry Capacity: 3.0Kg
- Washing power: 410W
- Spinning power: 330W
- Drying power: 500W
- Stainless Steel Drum
- With Hot Air Dry function
- Magic Cleaning Filter
- Tempered Glass Transparent Lid
- With delay wash function
- Child Lock
- Fuzzy Control function
- Anti-Rat Base Design
- Powerful & Durable Motor for Efficient Washing
- With 8 program selection

**RM1790(WM) RM1871(EM)**  
RCP: RM2479(WM) RM2560(EM)



### FULLY AUTO WASHING MACHINE MWM-13 AQUAMARINE

- Washing Capacity: 13.0Kg
- Spinning Capacity: 13.0Kg
- Washing power: 410W
- Spinning power: 330W
- Stainless Steel Drum
- Magic Cleaning Filter
- Tempered Glass Transparent Lid
- With delay wash function
- Child Lock
- With Detergent drawer Compartment
- Fuzzy Control function
- Anti-Rat Base Design
- Powerful & Durable Motor for Efficient Washing
- With 9 program selection

**RM1790(WM) RM1871(EM)**  
RCP: RM2479(WM) RM2560(EM)

### FULLY AUTO WASHING MACHINE MWM-9 TOPAZ

- Washing Capacity: 9.0Kg
- Spinning Capacity: 9.0Kg
- Washing power: 410W
- Spinning power: 330W
- Stainless Steel Drum
- Magic Cleaning Filter
- Transparent Lid
- With Memory Back Up Function
- Fuzzy Control Function
- With Detergent Drawer Compartment
- Anti-Rat Base Design
- Powerful & Durable Motor for Efficient Washing
- With 8 program selection

**RM1199(WM) RM1280(EM)**  
RCP: RM1809(WM) RM1890(EM)



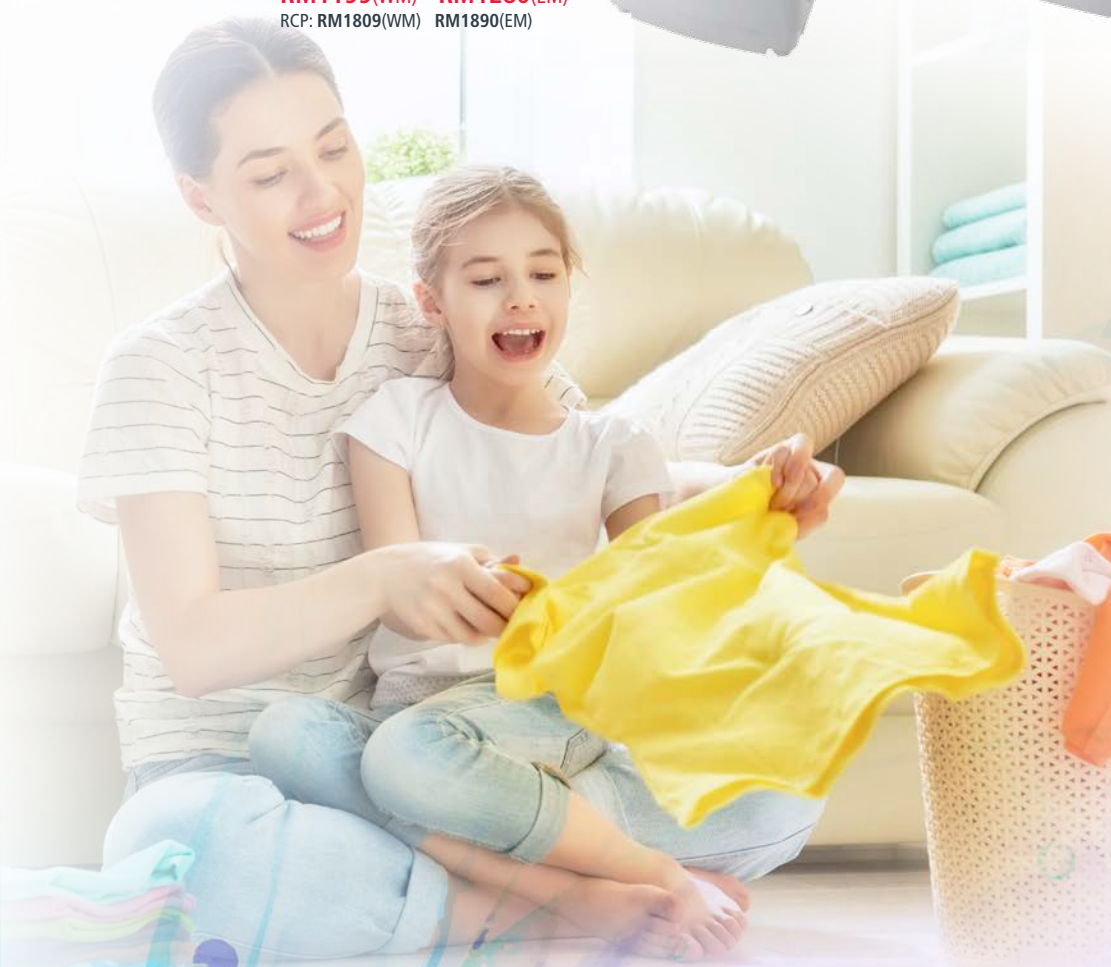
### FULLY AUTO WASHING MACHINE MWM-7 ZIRCON

- Washing Capacity: 7.0Kg
- Spinning Capacity: 7.0Kg
- Washing power: 325W
- Spinning power: 250W
- Stainless Steel Drum
- Magic Cleaning Filter
- Foldable transparent lid
- Anti-Rat Base Design
- With Memory Back Up Function
- Powerful & Durable Motor for Efficient Washing
- With 8 program selection

**RM929(WM) RM990(EM)**  
RCP: RM1329(WM) RM1390(EM)



save  
up to  
**34%**





# SEMI AUTO WASHING MACHINE

save  
up to  
**47%**



**SEMI AUTO WASHING MACHINE  
MWM-1312SA**

- Washing Capacity: 12.0Kg
- Spinning Capacity: 6.5Kg
- Washing power: 420W
- Spinning power: 180W
- Anti-rat Base Design
- With Lint Filter

**RM699(WM) RM799(EM)**  
RCP: RM1239(WM) RM1339(EM)



**SEMI AUTO WASHING MACHINE  
MWM-1310SA**

- Washing Capacity: 10.0Kg
- Spinning Capacity: 6.5Kg
- Washing power: 380W
- Spinning power: 180W
- Anti-rat Base Design
- With Lint Filter

**RM599(WM) RM679(EM)**  
RCP: RM1069(WM) RM1149(EM)

**SEMI AUTO WASHING MACHINE  
MWM-1370SA**

- Washing Capacity: 7.0Kg
- Spinning Capacity: 5.0Kg
- Washing power: 350W
- Spinning power: 160W
- Anti-rat Base Design
- With Lint Filter

**RM469(WM) RM519(EM)**  
RCP: RM879(WM) RM929(EM)



# VACUUM CLEANER



**3-in-1 VACUUM CLEANER  
MVC-TA161DW**

- Power rating: 1600W
- 23 Litre dust capacity
- 360° swivel head
- 3-in-1 wet, dry & blow cleaning function
- Washable filter with long-lasting material

**RM369(WM) RM379(EM)**  
RCP: RM499(WM) RM509(EM)



**3-in-1 VACUUM CLEANER  
MVC-TC181SS**

- Power rating: 1800W
- 32 Litre dust capacity
- 360° swivel head
- 3-in-1 wet, dry & blow cleaning function
- Washable filter with long-lasting material

**RM509(WM) RM519(EM)**  
RCP: RM679(WM) RM689(EM)



**VACUUM CLEANER  
MVC-DEXTEROUS 16PK  
MVC-DEXTEROUS 16BL**

- Power rating: 1200-1600W
- 1.8 Litre dust capacity
- Bagless design with Dust Box
- Washable Dust Box – Easy to clean and maintain
- Multiple Filtration System: Pre-Filter, Hepa Filter and Carbon Filter
- Cable re-winder
- With Full Dust Indicator.

**RM299(WM) RM309(EM)**  
RCP: RM409(WM) RM419(EM)



**CORDLESS 3 in 1 STICK / HANDHELD  
VACUUM CLEANER  
MVC-CHS120**

- Power rating: 120W
- Dust capacity: 1.2L
- With Motorized Dust Mite Brush
- Convertible stick / handheld vacuum cleaner
- ≥10,000 PA
- Rechargeable 2500 mAh capacity Lithium-Ion Battery.
- Continuous use up to 20 minutes running time
- Bagless dust container with Cyclone filter
- Rotating brush with 180° Swivels sideways for convenient handling in corners and around obstacles.

**RM399(WM) RM405(EM)**  
RCP: RM509(WM) RM515(EM)



save  
up to  
**27%**



Motorized Dust Mite Brush



Crevice Tool Clean Hard To Reach Places



Ellipse Brush Easily Remove Dirt



Washable Fiber Filter



Washable Cyclone Filter



180° Rotatable Brush Hose



Accessories

**NEW**





Exclusive Dealer:

- Offer valid while stocks last
- Prices shown are not valid for redemption project & duty-free sales
- We reserve the right to alter, modify or replace the product price, specifications & models without prior notice
- All items featured in this catalogue may differ from the actual product in terms of colour & design details
- The recommended retail price is the price which the importer recommends that the retailer sell the product. Retailers are able to independently set the retail price.

Market Expansion  
Services by  
[www.dksh.com.my](http://www.dksh.com.my)



**DKSH Malaysia Sdn Bhd** 196101000441 (4476-U)  
B-11-01, The Ascent, Paradigm,  
No. 1, Jalan SS7/26A, Kelana Jaya,  
47301 Petaling Jaya, Selangor Darul Ehsan.  
Tel: +603 7882 8888 Fax: +603 7882 5555  
[www.morgan.my](http://www.morgan.my)

Customer Care Hotline: **03-7781 9229**



[facebook.com/morganappliances](https://facebook.com/morganappliances)