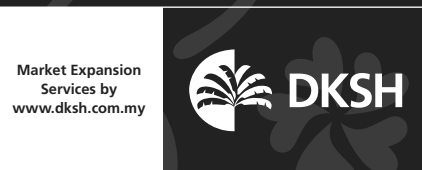


 **Mórgan®**

 **Mórgan®**



E-mail: electrical.appliance@dksh.com
www.morgan.my

 facebook.com/morganappliances

USER MANUAL



Automatic Washing Machine

MWM-Vagor 9 FA

C O N T E N T S

- 3** Safety And Precautions
- 6** Washer Installation
- 8** Preparation Before Washing
- 9** Parts Identification
- 10** Control Panel
- 11** Quick Start
- 12** Washing Instructions
- 13** Special Features
- 15** Fully Automatic Wash Program
- 15** Technical Specifications
- 16** Cleaning And Maintenance
- 18** Troubleshooting
- 19** Malfunction Display And Solutions

SAFETY AND PRECAUTIONS

Observe the following items in order to prevent from injuring yourself, others and the damage of property:



Warning General Warning symbol of potential hazards that may result in serious injury or death



Caution General Caution symbol to alert user of potential injury to persons and/or property.

Please observe the following contents accompanying the symbols



This symbol alerts potential hazards. All safety messages should be obeyed to avoid possible harm.



This symbol denote prohibited actions. All safety messages should be obeyed to avoid possible dangers.



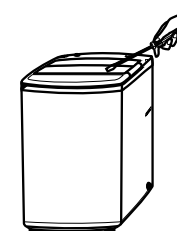
This symbol denotes mandatory actions. All safety messages should be obeyed to avoid possible hazards.



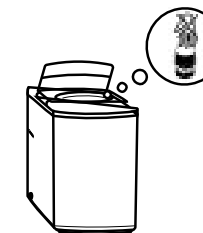
Never allow this appliance to be used by persons (including children) with psychological, physical or sensory impairments or with insufficient knowledge, unless closely supervised and instructed by someone responsible for their safety. Children should be supervised to ensure they do not play with the appliance at all times.

WARNING

DO NOT dismantle/assemble the machine.



DO NOT insert hands to remove clothing when tub is still spinning. Always wait for it to stop.



DO NOT install machine in damp and wet areas to prevent electric shocks, short circuits and damage.



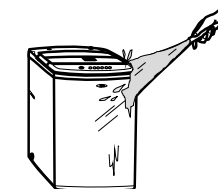
No wet areas



DO NOT spray water directly onto the machine when cleaning.



No spraying



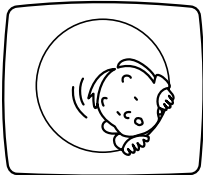
SAFETY AND PRECAUTIONS

WARNING

DO NOT allow children to climb onto the machine or peer into the spin barrel to avoid accidents.



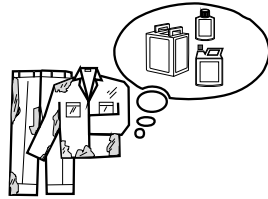
Prohibited



DO NOT wash clothes that have been in contact with flammable liquids like kerosene, gasoline and alcohol.



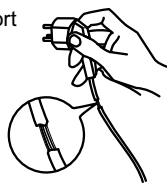
Prohibited



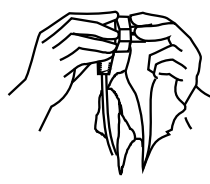
DO NOT damage power cord/power plug in order to avoid electric shock, short circuit and risk of fire.



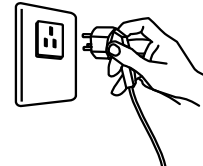
Prohibited



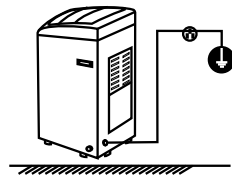
DO clean the power plug regularly to remove dust and dirt to prevent malfunctions.



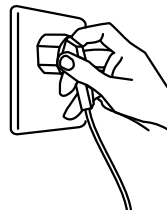
DO remove power plug from the power supply if the machine is not in use.



DO earth the power socket to avoid electric shock, short circuit and accidental leakage.



DO insert the power plug into the power supply correctly and securely.



DO NOT place flammable materials like burning candle, lighted cigarettes, electric stove on the washer. Keep away from heat sources.



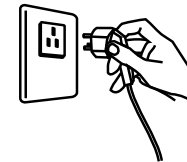
Smoke and heat sources prohibited



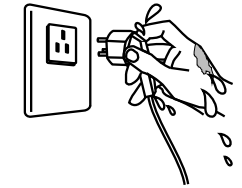
SAFETY AND PRECAUTIONS

WARNING

DO use the correct power supply with correct rated voltage.

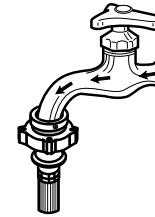


DO NOT touch the power plug with wet hands.



CAUTION

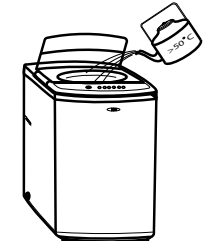
DO ensure water inlet is connected with tap turned on.



DO NOT exceed 50°C when using warm water for washing.



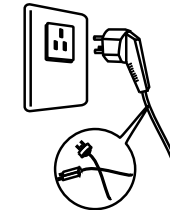
Prohibited



DO NOT replace or modify the power cord. Request for authorized repair and service



Prohibited



DO NOT place young children or heavy objects on the washer top.



Prohibited



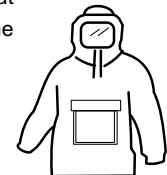
DO NOT yank on the power cord. Pull on the power plug.



Please do not wash down jacket, raincoat, fishing coat and similar clothes in the washer.

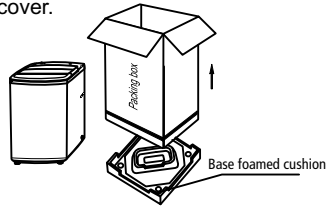


Prohibited



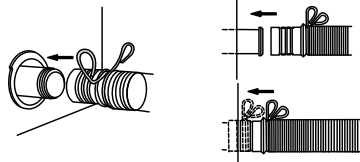
WASHER INSTALLATION

- Remove package and bottom board of the cabinet on the foam cover.
- Open the lid of the washer door and remove accessories.
- DO NOT wash the foam cushion as trial operation.

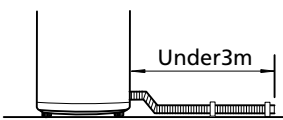


INSTALLATION OF DRAINAGE HOSE

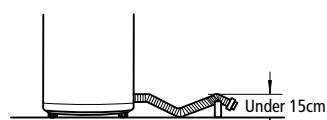
Completely sleeve the drain hose over the drainage outlet.
Fix and tighten it with a hoop. (As shown in the figure)



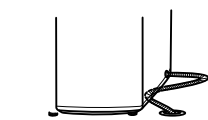
Placement Of Water Drainage Hose



DO NOT exceed 3m if the water hose is to be extended as it will affect the water discharge.



The placed height of water drain hose should not exceed 15cm.



Do not bend the water drain hose and place it under the washer.

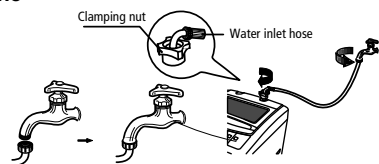
FOR LOWER DRAINAGE SYSTEM ONLY

INSTALLATION OF WATER INLET PIPE

- Place the water inlet pipe(which has metallic filtering bag) screw on to the tap. Tightly screw another end of water inlet hose on water inlet valve, (with rubber seal ring inside).

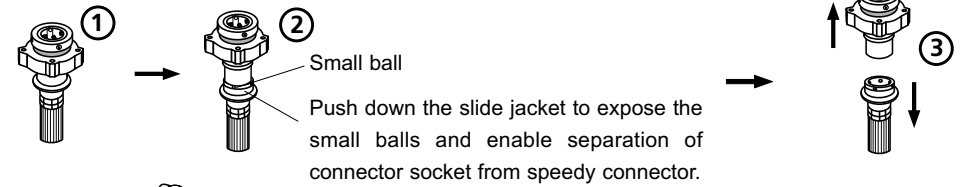
Note: When tightening the clamping nut, evenly apply the force and do not twist the water inlet valve to avoid breaking of water inlet valve joint.

ONLY FOR MODELS WITH DOUBLE SCREW THREAD WATER INLET PIPE

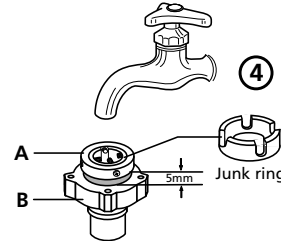


WASHER INSTALLATION

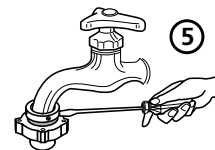
INSTALLATION OF WATER INLET PIPE



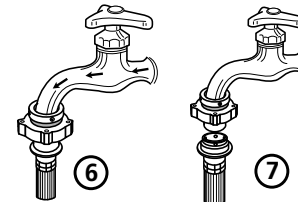
Small ball
Push down the slide jacket to expose the small balls and enable separation of connector socket from speedy connector.



The connection socket consists of A and B two parts. Before installation, A and B two parts must be unscrewed about 5mm, or directly disconnected. If the bore of water tap is larger, remove the plastic junk ring of part A.



Unscrew four screws of part A and sleeve part A horizontally over the mouth at the end of water tap (the mouth at the end of water tap must be flat and smooth. Flatten it by filing if it is not flat) and push it upward with force making the rubber washer firmly press the plane center of water tap mouth. Then tighten the screw sequentially. After that, tightly screw on part B.

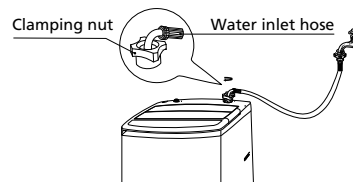


Connect

Separate

CONNECT: Push down the slide jacket of speedy connector (4 small balls must be exposed), insert it into the connection socket and then push upward. Release the connection of water tap with speedy connector completely. If it is required to feed water, simply open the water tap.

SEPARATE: Close the water tap, push down the slide jacket of speedy connector and pull out the speedy connector.



Tightly screw another end of water inlet hose on water inlet valve. (with rubber seal ring inside).

Note: When tightening the clamping nut, evenly apply the force and do not twist the water inlet valve to avoid breaking of water inlet valve joint.

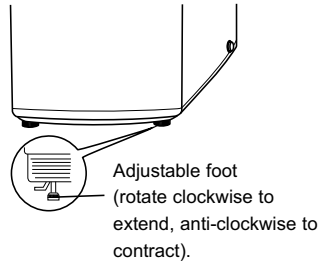
ONLY FOR MODELS WITH SINGLE SCREW THREAD WATER INLET PIPE

! If the power cord is damaged, it must be replaced by the manufacturer, its service agent or similarly qualified persons in order to avoid a hazard. The instructions for appliances connected to the water mains by detachable hose-sets shall state that the new hose-sets supplied with the appliance are to be used and that old hose-sets should not be reused. The openings must not be obstructed by a carpet. This appliance is for indoor use only.

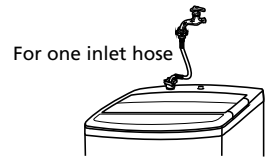
PREPARATION BEFORE WASHING

ADJUST THE ADJUSTABLE FOOT TO ENSURE WASHE STABILITY

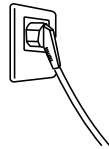
Adjustable foot (rotate clockwise to extend, anti-clockwise to contract). Incline the washer slightly and loosen the adjustable foot knob. Adjust the foot knob and ensure maximum contact with the ground. Tighten and lock the foot knob. Ensure washer is placed on flat, stable ground surface to prevent washer barrel from excessive vibration and damaging the cabinet.



INSTALL THE WATER INLET HOSE.



CONNECT WITH TO POWER SUPPLY

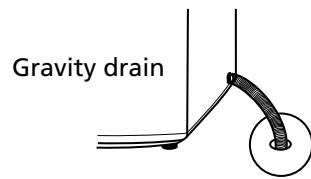


TURN ON THE WATER SUPPLY



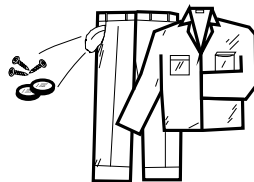
PUT DOWN THE DRAIN HOUSE.

Note: Water will overflow if the height of the water hose is below 860mm.

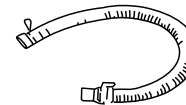
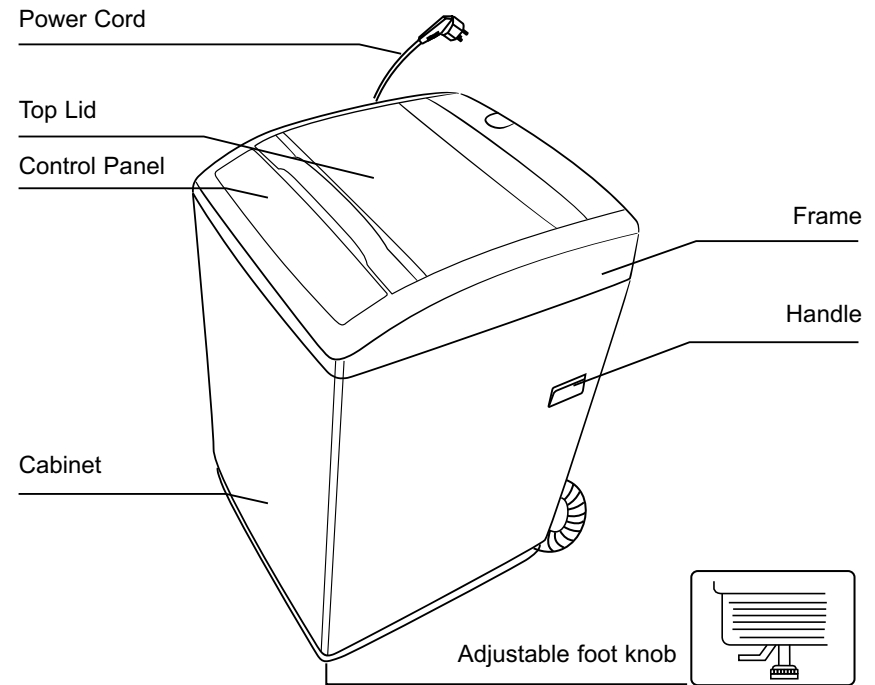


PLACE CLOTHING INTO WASHER AND ADD ADEQUATE AMOUNT OF DETERGENT.

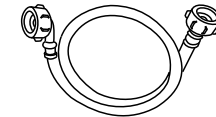
NOTICE: Remove coins, keys and other objects and zip up clothing to prevent them from damaging the barrel.



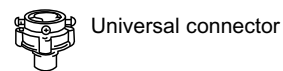
PARTS IDENTIFICATION



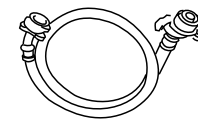
Fixing ring (1) is used for the fixing in time of the installation of the lower drain hose.
Only for lower drainage hose



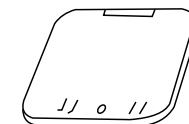
Water inlet hose assembly
Only for model with double screw thread water inlet pipe



Universal connector



Water inlet hose assembly
Only for model with single screw thread water inlet pipe



Self-tapping screw
Only for models including base cover

Please refer to attached reading materials.

CONTROL PANEL



WASH LEVEL

Press this button to preset selected water quantities. The indicator light will illuminate and move with each press.

WASH

Press the button to select the washing duration.

RINSE

Press the button to select the rinsing duration.

SPIN

Press the button to select the spinning duration.

DELAY

Press this button to preset delay time. For > 24 hours, every button press will extend delay time by an hour. For > 24 hours, every button press will extend delay time by 6 hours up to 48 hours and will revert back to default status after that.

PROGRAMME

Choose automatic presets from:

- Normal (light)
- Jeans (light)
- Silk (light)
- Quick (flash)
- Anti-Wrinkle (flash)
- Air Dry (flash)

CHILD LOCK

Press the "water level" and "Spin" at the same time to lock buttons on control panel. Press the "water level" and "Spin" at the same time again to unlock.

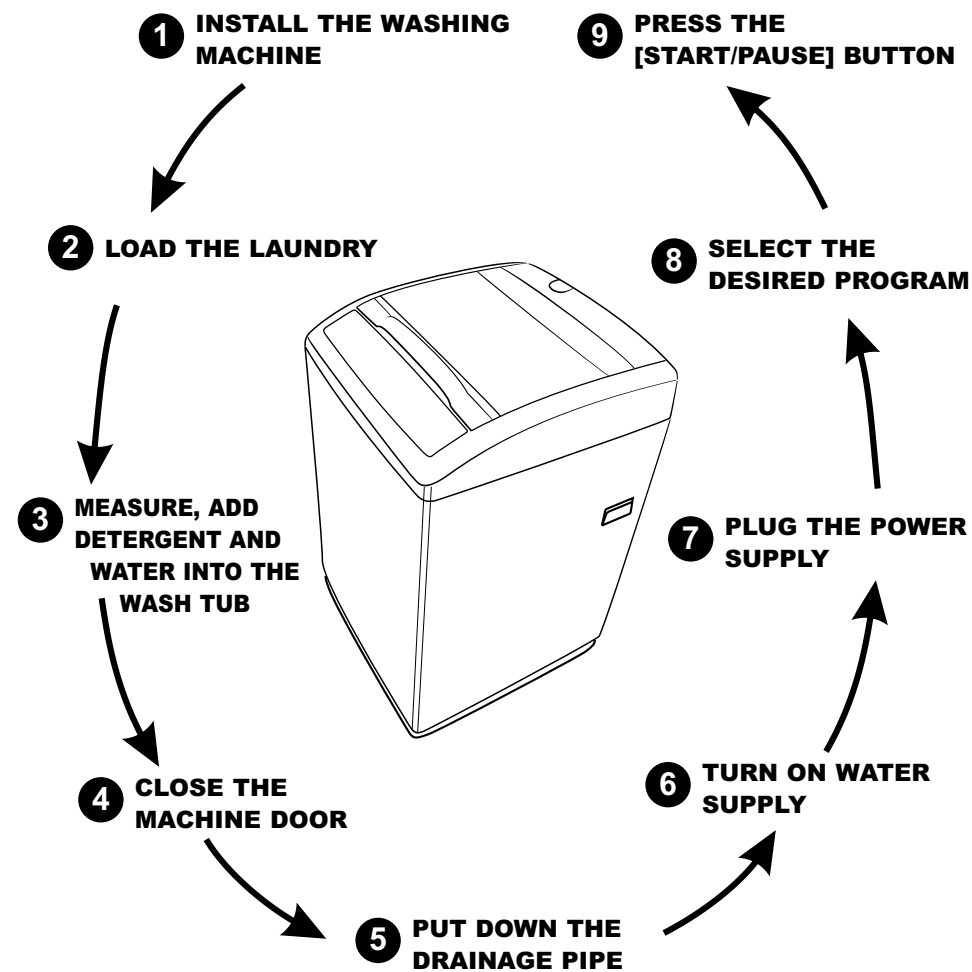
START/PAUSE

After programme selection, press the button to start. Press the button to pause during operation. Press again to resume operation until program completes.

** The manufacturer reserves the right to amend/modify the illustrations without notice.*

To protect the control panel, the interval time of power on and off should be not less than 30 seconds.

QUICK START



PROGRAMME SELECTION

1. Press the POWER button.
2. Select the proper water level and other attached functions.
3. Press the start/pause key.

When washing completes

- When washing is completed, the buzzer will sound continuously for 6 times and power will be automatically cut off thereafter.
- Turn water supply off.
- Remove power plug from power supply.

WASHING INSTRUCTIONS

INSTRUCTION OF THE NORMAL PROGRAM

1. [Normal] wash program is the easiest, most convenient and most common washing program. When the user press the power switch and then press [Start/Pause] button, the normal washing program will start to work.
2. When the washer start to work, the digital tube show the remain time. The indicator light which stand for remaining time is flickering.

STEPS IN DETAILS

1. Press the power switch.
2. According to the washing amount choose the proper water level.
3. Press START/PAUSE button.

INSTRUCTION TO SINGLE WASH PROGRAM

1. You may freely select any single wash program, or combine WASH, SPIN, and SPIN programs if desired. Simply turn off any one (or two) of these 3 indicators if not needed and leave the selected ones illuminated.
2. Single wash -- after switching on the power, turn off RINSE and SPIN two indicators by pressing these two keys. The operation for single rinse and single spin is similar.
3. Single wash-spin – after switching on the power, turn off RINSE indicator by pressing that key. The operation for single rinse-spin and single wash-rinse is similar.

USE THE CLEANING SOLUTION FOR TWICE

1. Place first batch of laundry, add detergent and press "Function" button to set single "wash" program.
2. Remove the first batch of laundry after the buzzer sounds.
3. Place second batch of laundry and select "WASH, RINSE, and SPIN".
4. Remove laundry after the buzzer sounds.
5. Place first batch of laundry and press "Function" button to run "RINSE" and "SPIN".

NOTICE

1. Close the lid of the door when machine is running, otherwise, it will automatically stop working during spin process and send out abnormal warning.
2. The washer will not work when the filled water does not reach the set water level.

SPECIAL FEATURES

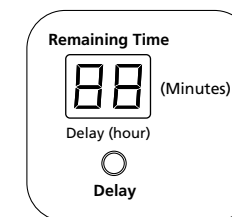
DELAY TIME PROGRAM

Delay time means the preset beginning time of washing.

1. Switch on the power.
2. Open the tap and lay the drainage hose.
3. Put in the laundry and detergent.
4. Select the prope water level according to the quantity of clothes.
5. Select the functions and programs.
6. Press "DELAY" button to select the beginning time of washing.
7. close the lid and press "START/PAUSE" button.

Method of use delay button

Press the "DELAY" button each time, the number o the digital indication adds by "1"; After the number reaches "24", press the "DELAY" button each time, the number adds by "6"; After the number reaches 48, the light of delay time is turned off , and the delay program return to original status.



Confirmation of the delay and inspection

1. After the delay function is started, the corresponding delay light will flash, and other lights will be turned off.
2. After commencing the delay button, press and hold the "Delay" button to select desired preset program and function. Release "Delay" button to return to default delay status.

Cancel the delay time, or alternate the delay time

1. Press " Power" button to cancel the delay time.
2. To change the delay time, cancel the delay time first, and then press "Delay" button to reset.

NORMAL

For normal washing procedure.

QUICK

Short washing time. Suitable for washing lightly stained clothes.

AIR DRY

As for not easily fading,deforming, and non-waterproof clothes, can use the function to dry clothes without heating, and to reach the result of being dried in a room.

ANTI-WRINKLE

Short washing time with many rinses for a more thorough wash.

SILK

Delicate wash, especially for silk frabics.

JEANS

For heavily soiled or stained clothes.

SPECIAL FEATURES

FUNCTION OF AUTOMATIC POWER SHUT OFF

1. If the machine is non-operational 10 minutes after powering on, it will power off automatically.
2. After end of operation, the buzzer will sound 6 times, and the power will off automatically.

FUNCTION AND ADJUSTING FOR UNBALANCE

1. If the laundry is placed on uneven surfaces, it will most likely to cause vibrations during spinning. The machine is capable of adjusting any imbalance and correcting them if the imbalance is excessive.
2. If imbalances are not rectified, a warning alarm will sound.

FUZZY CONTROL FUNCTION

1. The "fuzzy" program automatically detects laundry loads. If there is water in the tub prior to washing, the machine will deactivate "fuzzy" control. If water level is selected manually, the machine will deactivate "fuzzy" contro function.

POWER FAILURE MEMORY FUNCTION

1. In the event of a power supply disruption, the machine will memorize the current operation state and revert to that same state once power supply resumes.

** Applies only to washers with the two abovementioned functions*

FULLY AUTOMATIC WASH PROGRAM

PROGRAM	WASH TIME	RINSE TIME	SPIN TIME	TOTAL TIME
NORMAL	12 min	2 times	5 min	42 min
QUICK	6 min	1 times	3 min	19 min
SILK	Soak 10 min Wash 6 min	2 times	5 min	54 min
JEANS	Soak 13 min Wash 6 min	2 times	1 min	41 min
ANTI-WRINKLE	9 min	2 times	1 min	35 min
AIR DRY			60 min	60 min

NOTE: The total times include water filling and draining times. Water pressure and water drainage speeds can affect total operation times.

TECHNICAL SPECIFICATIONS

Model	MWM-Vagor 9 FA
Rated Voltage / Frequency	220-240V~ 50Hz
Rated Wattage	500W
Capacity	9.0kg
Max. water presure permitted in the water inlet	0.6Mpa
Min. water presure permitted in the water inlet	0.1Mpa

CLEANING AND MAINTENANCE

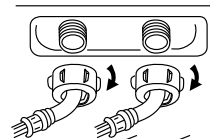
END OF PROGRAM

- The machine will sound at the end of any program to remind you to remove laundry or to resume operation again.
- After the sound, the washing machine returns to its power-off state with no display and all lights off.
- Turn off water supply to prevent water leakage and remove power plug to avoid fire hazards.



MAINTENANCE

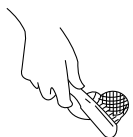
- Use a clean, soft cloth to wipe off water and dirt on the exterior of the machine after every use. Do not use abrasive chemical cleansers as they can damage the plastic finishing.



CLEANING THE WATER INLET

After prolonged use, the water inlet mesh bag may be blocked with smudge and should be cleaned according to these steps:

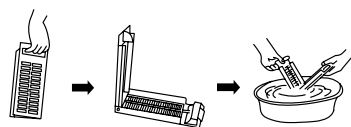
- Switch on power and turn off water supply.
- Allow washer to work for 5 seconds so that water flows into the tub through the water inlet hose. Turn off power.
- Remove the water inlet hose and clean the mesh bag and reassemble the water inlet assembly.



CLEANING THE MAGIC FILTER

After using the washing machine for a period, please clean it according to the following steps:

1. Remove out the lint filter.
2. Open the filter and wash it clean in the water.
3. Restore it and fix it.



(only for magic filter)

CLEANING THE NORMAL FILTER

After using the washing machine regularly, clean it according to the following steps:

1. Take off the lint filter.
2. Turn over the mesh bag and wash it clean in the water.
3. Restore and fix it.

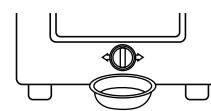


(only for normal filter)

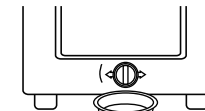
CLEANING AND MAINTENANCE

CLEAN THE LINT FILTER IN THE DRAIN PUMP

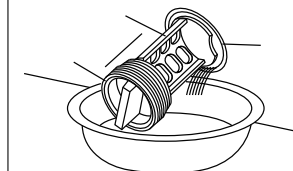
(only for models with drainage filter)



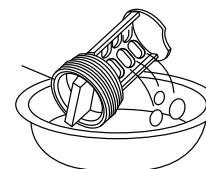
1. Drain water from the pump container.



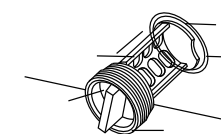
2. Loosen the pump cover anti-clockwise.



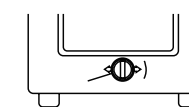
3. Remove out the lint filter.



4. Clean the filter.



5. Restore it and adjust the convex place to align at the pump hole.



6. Tighten the pump cover clockwise.

TROUBLESHOOTING

Should you experience malfunctions or problems with your washer, please contact your manufacturer, nearest authorized service agent or a similarly qualified person. **DO NOT** attempt to repair it yourself. The following are helpful troubleshooting guides:

LIST OF SYMPTOMS AND REASONS

SYMPTOMS	REASONS
NO WATER FLOWING IN	<ul style="list-style-type: none"> Power may be turned off / fuse blown out No water supply / low water pressure Inlet hose not connected Inlet valve filter screen obstructed Inlet valve coil damaged "Start/Pause" button may have been pressed accidentally
NO WASHING	<ul style="list-style-type: none"> Power may be turned off / fuse blown out Power supply may be too low Water inside washer below the minimum level (<i>washer will not work if below minimum level</i>) "Delay" washing mode may be selected
ABNORMAL DRAINING	<ul style="list-style-type: none"> Water drainage hose placed too high Mouth of water hose submerged in water Drainage valve inner rubber ring is obstructed
ABNORMAL SPIN	<ul style="list-style-type: none"> Door lid is closed Clothing piled at one side of barrel or excessive laundry load Washer placed on unstable surface Loose motor belt

NOTE: If laundry is piled up to one side during the spin process, it will result in imbalance of the spin barrel. The computer inside the washer will automatically correct it by filling in more water. The computer will attempt to correct this problem in 3 times. If problem still persists, you will have to manually sort out the laundry inside the washer.

MALFUNCTION DISPLAY AND SOLUTIONS

Should the washer malfunction, contact the nearest service centre or the manufacturer's sales service department immediately.

DO NOT attempt to repair it yourself. The following are the solutions for problem codes that usually appear on the display panel during a malfunction:

PROBLEM	POSSIBLE CAUSE	PROBLEM CODE	BUZZER SOUNDS	ALARM SOUNDS
ALARM FOR WATER INLET	Water is filled for 16 minutes and yet does not reach the preset level	"E1" flares	The buzzer goes on for 10 seconds. If the fault is not sloved, buzzes again for 10 seconds in every 16 minutes.	Open the lid to deal with faults, then close the stop the alarm.
ALARM FOR OPENING LID	Lid is opened after starting. Delay timer, or lid is opened during spinning, or when lid is opened with child lock activated.	"E2" flares		
IMBALANCE ALARM	Check imbalance for the thirt time	"E3" flares		
DRAIN ALARM	Alarm for water drain time out	"E4" flares		
OVERFLOW ALARM	Water continues filling even after water has reached the preset level	"E5" flares		Power off, repair