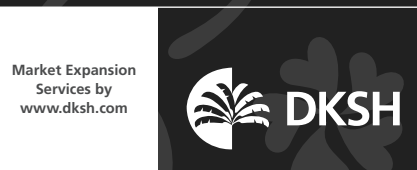


 **Mórgan®**

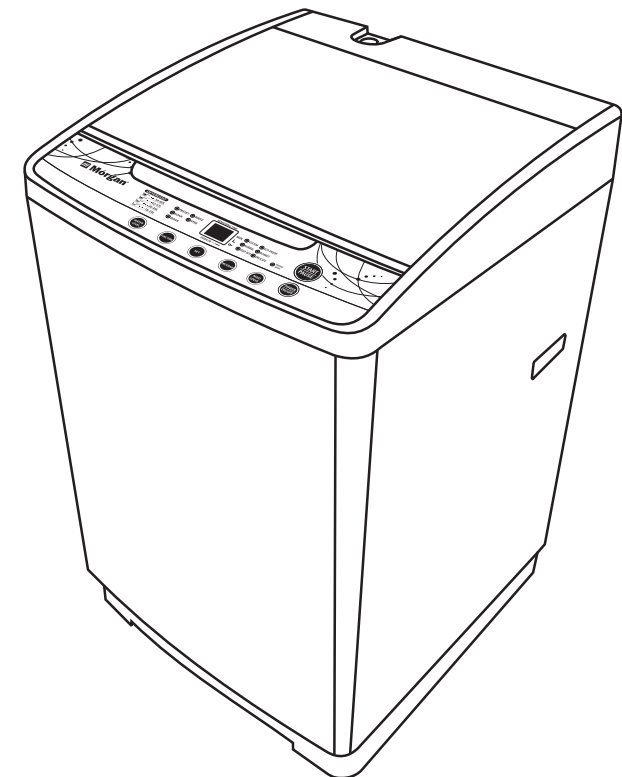
 **Mórgan®**



E-mail: [electrical.appliance@dksh.com](mailto:electrical.appliance@dksh.com)  
[www.morgan.my](http://www.morgan.my)

 [facebook.com/morganappliances](https://facebook.com/morganappliances)

## USER MANUAL



# Automatic Washing Machines

**MWM-680FA**  
**MWM-780FA**  
**MWM-890FA**

# C O N T E N T S

**4** Warning

**4** Care And Maintenance

**5** Parts Identification

**6-8** Installation Instruction

**9-10** Control Panel: Functions & Processes

**10** Guidelines Before Washing

**10** Program Selection Guide

**11** Normal Usage

**12** How To Use The Blanket Program

**13** How To Use Customizes Program

**14** How To Use Preset Washing

**14-15** Various Functions

**16** Troubleshooting

**17** Troubleshooting Guide

**18** Specifications

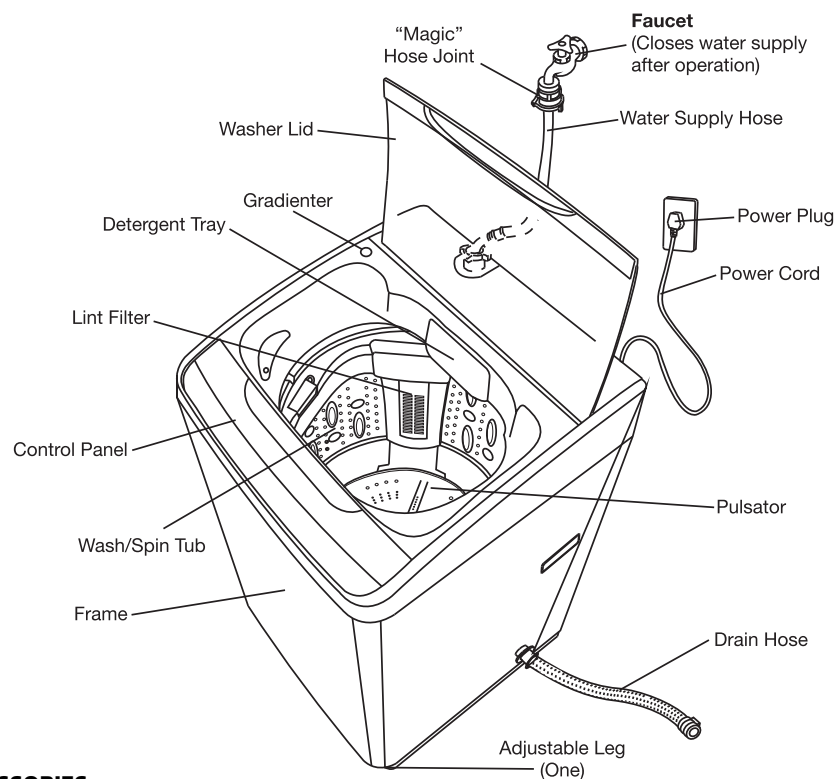
## WARNING

<p>1. Never put your hand(s) into the Wash/Spin Tub while the washer is operating.</p> <ul style="list-style-type: none"> <li>Reaching your hands into the washing machine during operation may cause serious injuries.</li> <li>If the Wash/Spin Tub does not stop within 15 seconds after the Washer Lid is opened, turn the washer off immediately and call a service person.</li> </ul>	<p>2. Ensure the power plug and power cord are properly connected to the washer.</p> <ul style="list-style-type: none"> <li>An improperly connected power plug may pose a fire hazard.</li> <li>Never disconnect the washer by yanking on the power cord.</li> <li>Never disconnect/connect the power plug with wet hands as it may cause electric shocks.</li> </ul>
<p>3. Be sure not to bring any type of flame near the washer or put lit cigarettes or volatile materials on the top of the washer.</p>	<p>4. Never wash laundry stained with benzene, kerosene, thinner or gasoline.</p> <ul style="list-style-type: none"> <li>It may cause a risk of fire explosion.</li> </ul>
<p>5. Do not install the washer in the bathroom or humid place.</p> <ul style="list-style-type: none"> <li>It may cause malfunction or an electric shock.</li> </ul>	<p>6. Do not allow children to play on or near the washer</p> <ul style="list-style-type: none"> <li>If a child accidentally falls in to the Wash/Spin Tub, serious injury can occur.</li> </ul>
<p>7. Be sure not to splash or pour water on the Control Panel.</p> <ul style="list-style-type: none"> <li>It May cause a malfunction or electric shock.</li> </ul>	<p>8. It is not recommended to allow your washer to be repaired by an unqualified person. Repair must only be carried out by a qualified technician.</p>

## CARE AND MAINTENANCE

<p><b>Washing Machine Body</b></p> <p>Use soft cloth to wipe off excess water or dirt on the surface of the washer.</p> <ul style="list-style-type: none"> <li>Do not spray directly onto the washer body.</li> <li>Detergent and other chemicals are not to be used on the surface</li> </ul>	<p><b>Water Inlet Valve</b></p> <p>(Recommended to clean every 6 months)</p> <ul style="list-style-type: none"> <li>The water inlet mesh bag may be blocked, please remove the water inlet hose, take out the water inlet mesh bag from the water inlet valve, clean the mesh bag, then assemble the mesh bag in the valve and attach the water inlet hose.</li> </ul>
<p><b>"Magic" Hose Joint Filter</b></p> <p>(Recommended to clean every 6 months)</p> <ul style="list-style-type: none"> <li>Pull the water inlet hose out.</li> <li>Turn off the revolver according to the figure shown.</li> <li>Load off the "Magic" Hose Joint Filter and clean the crud with a toothbrush.</li> <li>Install the clean "Magic" Hose Joint Filter to revolver and water inlet hose.</li> </ul>	<p><b>Lint Filter</b></p> <p>(Recommended to clean every week)</p> <ul style="list-style-type: none"> <li>Take out the lint filter</li> <li>Wash the lint filter with water.</li> <li>Install the filter (Align the frame claw to the groove below)</li> </ul> <p><b>CAUTION: Lint filter is fragile</b></p>

## PARTS IDENTIFICATION



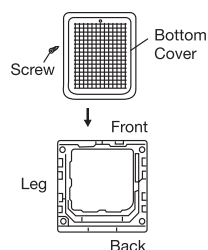
## ACCESSORIES

<p><b>Instruction Manual</b></p>	<p><b>Drainage Hose</b></p> <p>Hose Band</p>	<p><b>Water Supply Hose</b></p>
<p><b>Magic Hose Joint</b></p>	<p><b>Bottom Cover</b></p>	<p><b>Screw</b></p>

## INSTALLATION INSTRUCTIONS

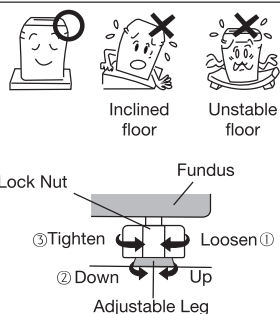
### INSTALLING BOTTOM COVER

1. Unplug the power Cord of the washer.
2. Gently lay down the front side of the washer on a soft mat or cushion. (Be careful not to dent the frame.)
3. Insert the attached Bottom Cover onto the hooks of the leg by pushing until reaches into the front hooks.
4. Fasten the Bottom Cover with screw.
5. Gently set the washer upright.



### WHERE TO PLACE THE WASHER

1. Choose a dry location and away from exposure to direct sunlight.
2. Install the washer on a stable and level surface.
3. Adjust the adjustable Leg of the washer if necessary, to level the washer as shown in the figure.
4. Use the gradienter to ensure washer is evenly placed.



### CAUTION:

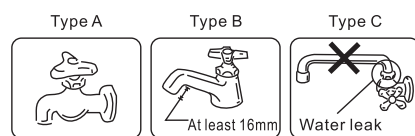
- Do not block the ventilation opening at the bottom of the washer, by placing the washer on a carpeted floor.

### ATTACHING THE "MAGIC" HOSE JOINT TO A TAP

Type A: Is the most suitable

Type B: The length of the mouth of tap needs to be at least 16mm. If it is less than 16mm, the "Magic" Hose Joint can't be installed.

Type C: It may cause water leakage.

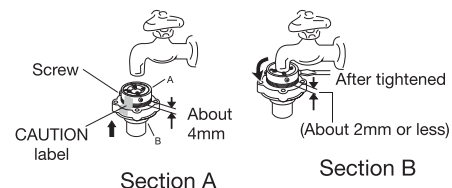


### CAUTION:

- Do not use water which is warmer than 50°C
- If your tap is not suitable, please consult the authorized service center.

### HOW TO ATTACH "MAGIC" HOSE JOINT

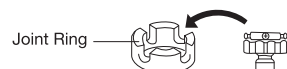
1. Loosen the four screws and slide the top of the "Magic" Hose Joint (section A in the figure) onto the tap. Then, securely tighten the four screws provided with the "Magic" Hose Joint by using a screwdriver to secure the top of the joint to the tap.
2. Remove the CAUTION label from the "Magic" Hose Joint.
3. Turn the male coupler on the joint (section B in the figure) clockwise to attach it securely to the top of the joint (section A in the figure).



- The appliance is to be connected to the water main using the new Water Supply Hose and "Magic" Hose Joint and

### CAUTION:

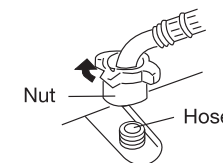
If the outer diameter of the tap is larger than the caliber of the Joint Ring, loosen the four screws and remove the Joint Ring from the "Magic" Hose Joint.



## INSTALLATION INSTRUCTIONS

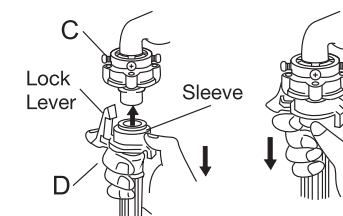
### INSTALLING WATER SUPPLY HOSE TO THE WASHER

- Turn the nut clockwise while holding the hose.



### CONNECTING THE WATER SUPPLY HOSE TO "MAGIC" HOSE JOINT

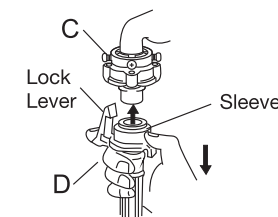
1. While pushing the sleeve on the female coupler (section D in the figure) of the joint down with your finger, connect the female coupler to the male coupler (section C in the figure).
2. Release the sleeve, then push the Water Supply Hose up into the "Magic" Hose Joint until it clicks into place.
3. Pull the Water Supply Hose down to make sure that it is securely attached.



### HOW TO DETACH THE WATER SUPPLY HOSE

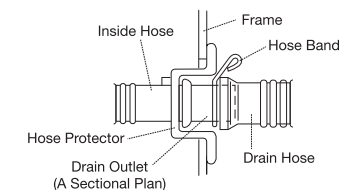
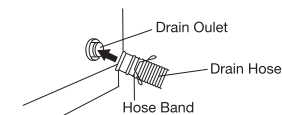
Please read the following procedure in order to avoid spilling water when detaching the Water Supply Hose.

1. Turn off the tap.
2. Press the Power ON/OFF button to turn on the power, the NORMAL button and the START/PAUSE button.
3. Press the POWER ON/OFF button to turn the power off 15 seconds later.
4. While pushing the lock lever and the sleeve on the female (section D in the figure) of the joint down with your fingers, detach the female coupler from the male coupler (section C in the figure).
5. Turn the water inlet hose anti-clockwise on the water inlet valve, until it gets detached.



### INSTALLING THE DRAINAGE HOSE

Place the clip part of the Hose Band sideways to prevent it from touching the frame which may cause a vibration noise.



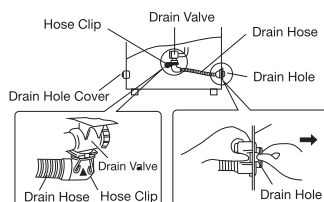
## INSTALLATION INSTRUCTIONS

### CHANGING THE DRAINAGE HOSE DIRECTION

You can change the direction from right side to left side.

**NOTE: Put gloves on to prevent injury of your hands when changing the Drainage Hose direction.**

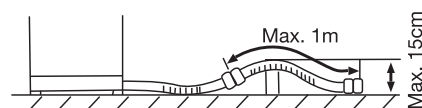
1. Unplug the Power Cord of the washer.
2. Detach the Back Cover by loosening screws at the back side of the washer. Detach outer Drainage Hose and gently lay down the front side of the washer on a soft mat or cushion.
  - Be careful not to open the Washer Lid and dent the frame.
3. Detach the Cap from the left side of the frame.
4. Loosen the Hose Band and pull inner Drainage Hose out of the Drainage Valve. Pull the Hose Band out of the Inner Drainage Hose.
5. Remove right and left Tabs of Drainage Outlet one side after another pushing the Tabs both inside and outside and pull the Drainage Hose out toward outside of frame.
6. Pull out this inner Drainage Hose from the left hole and attach it to the Drainage Outlet securely.
7. Connect the inner Drainage Hose to the Drainage Valve in place and fix the Hose Band.
  - If you do not attach as instructed, it can damage the inner Drainage Hose and cause a water leakage through the torn position.
8. Attach the Cap to the right hole.
9. Re-attach Back Cover and gently set the washer up.



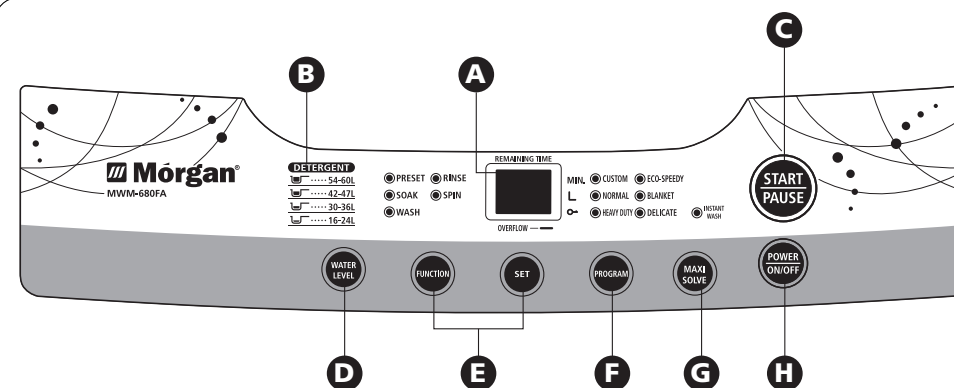
### EXTENSION OF THE DRAINAGE HOSE

When extending the external Drainage Hose, please follow the below figure for the length and height.

EXTENSION	HEIGHT	LENGTH
Not straight	Max. 15cm	Max. 1m
Straight	—————	Max 3m



## CONTROL PANEL: FUNCTIONS & PROCESSES



### A LED DISPLAY INDICATOR

Display various setting information as follows:

- By default, the display will show remaining washing time (e.g.) Remaining time is 20 minutes **20**
- When FUNCTION button is pressed, the digital display indicates time or times. (E.g.) Twice Water Saver Rinsed **02**
- When WATER LEVEL is Pressed, the indicator shows water level. (E.g.) Water level is 24L **24**
- When malfunction occur, the indicator will indicate warning. (E.g.) Water does not flow **E1**

### B DETERGENT INDICATION

- These are the spoon indications of the DETERGENT volume.
- Refer to "DETERGENT AND LOAD RECOMMENDATIONS" on page 10.

### C START/PAUSE BUTTON

- Press this button to start the washer operation.
- This button can also be used to pause the washer operation. To restart the washer operation, press the STAR/PAUSE button again.

- NOTE:**
1. This is not a cancel button.
  2. To cancel the End Buzzer, press and hold the START/PAUSE button for about 4 seconds until beeping ceases.

### D WATER LEVEL BUTTON

- You can choose the appropriate water level that matches the load size.

### E FUNCTION AND SET BUTTON

- The FUNCTION and SET button can be used to select PRESET, SOAK, WASH time, RINSE time, and SPIN time. For example, to set RINSE time: Press the FUNCTION button till RINSE light flashes. Then, press the SET button to select the desired rinse times.

### F PROGRAM BUTTON

- To choose the PROGRAM, press the PROGRAM button. Press until light flashes at required program.
- You can set the CHILD LOCK function. Refer to the CHILD LOCK section at page 14.

## CONTROL PANEL: FUNCTIONS & PROCESSES

### G MAXI SOLVE BUTTON

- You can press the "MAXI SOLVE" button to select or cancel the "MAXI SOLVE" function

### H POWER ON/OFF BUTTON

- To turn power on, press POWER ON/OFF and the same again to turn power off. When washing is done, power will automatically turn off in 5 seconds (except for water drainage setting).

- NOTE:**
- If you want to change the wash program, press the POWER ON/OFF again to switch off, then, press it again to switch it on.
  - If you leave the washer on without starting the operation, the power will switch off in 10 minutes automatically.

## GUIDELINES BEFORE WASHING

- Ensure nothing remains in the pockets (pin, coins etc. that can damage the clothes or the washer and result in annoying noises).
- Turn the clothes inside out to get rid of scraps.
- Woolen items like women innerwear, articles with embroidery, nylon etc. should be place in a laundry net for extra protection.
- Close the fastener and tie loose laces.
- Brush off the dirty parts like dust and sand.
- Put light clothes at the bottom. Please pause the operation and push them into the water when they float up.
- Please separate the washing of white clothes from coloured clothes, coats from innerwear.

## PROGRAM SELECTION GUIDE

### OPERATION STATUS FOR THE PROGRAM

PROGRAM	WASHING TIME (min)	RINSING TYPE	SPINNING TIME (min)
CUSTOM	10	Shower Rinse 1 time, Water Saver Rinse 1 time	5
NORMAL	5 – 12	Water Saver Rinse 2 times	5 – 6
HEAVY DUTY	7 – 14	Water Overflow Rinse 2 times	7 – 8
ECO-SPEEDY	5	Water Saver Rinse 1 time	3
BLANKET	12	Water Overflow Rinse 2 times	8
DELICATE	6	Water Saver Rinse 2 times	2

- The total time may vary with water pressure.
- Shower rinse could be changed as Water Saver Rinse. Please see page 14 for the instructions on the SHOWER RINSE.

## NORMAL USAGE

### PREPARATION

- Ensure drainage hose is connected.
- Connect the water supply hose to the faucet and turn the faucet on.
  - Ensure Magic Hose screws are securely tightened to prevent water leakage
- Plug the Power Cord into a socket.
- Put the clothes inside.
- Press POWER ON/OFF button.
- Press START/PAUSE button
  - Sensor detects the clothes weight automatically. (For NORMAL /CUSTOM /HEAVY DUTY)  
Auto select the proper water power, water level, wash/spin time and rinse time. (It is not available for 2 lowest water levels. Need to manually set it, if needed)
- Use recommended amount of detergent as show in chart.
- Close the washer lid.
  - The washer will alarm and stop working before spinning if the washer lid is not closed.

### MWM-680FA

WATER LEVEL	14	18	22	26	30	34	38	45
Water Volume (Approx. L)	14L	18L	22L	26L	30L	34L	38L	45L
Detergent Indicators	┌		┌		┌		┌	
Powdered detergent	10 – 15gm		15 – 22gm		20 – 26gm		26 – 32gm	

### MWM-780FA

WATER LEVEL	15	20	24	28	32	38	45	50
Water Volume (Approx. L)	15L	20L	24L	28L	32L	38L	45L	50L
Detergent Indicators	┌		┌		┌		┌	
Powdered detergent	12 – 20gm		20 – 28gm		28 – 36gm		36 – 45gm	

### MWM-890FA

WATER LEVEL	16	24	30	36	42	47	54	60
Water Volume (Approx. L)	16L	24L	30L	36L	42L	47L	54L	60L
Detergent Indicators	┌		┌		┌		┌	
Powdered detergent	12 – 25gm		25 – 35gm		35 – 50gm		50 – 70gm	

- To use softener, pour the softener into the Softener Dispenser before washing.
- Too much detergent causes poor rinsing and too litter detergent results in weak washing.



## HOW TO USE THE BLANKET PROGRAM

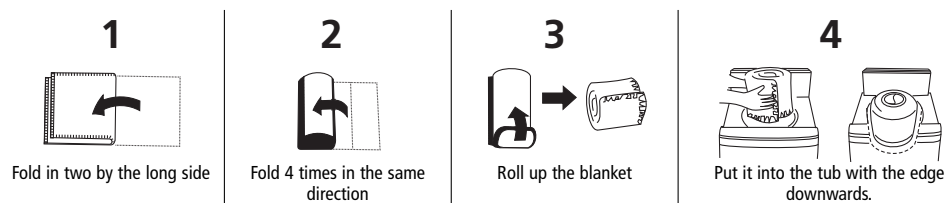
### For washing blanket and other bulky items.

- The water level will be changed to 8 automatically when BAKNKET PROGRAM is set. You can adjust it from level 5 to level 8 by hand accordingly to the size of the blanket or the bulky items.

### PROCEDURE

- Press POWER ON/OFF button and open the washer lid.
- Press the PROGRAM button continuously and choose the BLANKET program (The BLANKET light will flash).
- Fold up the blanket as the method shown in the figures below and put it into the washing tub.
- Press the START/PAUSE button.
- Close the washer lid.
  - The washer will stop working automatically before spinning if the washer lid is not closed.
  - The buzzer will alarm at the end of the operation and the power will be switched off automatically in 5 seconds.
  - Proceed to shut water supply and clean the lint filter.

### HOW TO FOLD UP THE BLANKET AND PUT IT INTO WASHING TUB.

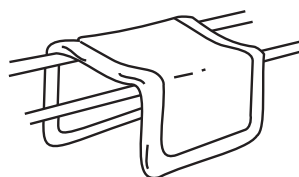


### END OF CYCLE

Remove blanket and dry

### NOTICE:

- Handwash the dirty sides before loading blanket into the washer.
- Use proper amount of detergent.
- Soiled blankets are better cleaned using warm water (approx. 30°C).
- If the blanket floats out during washing, press the START/PAUSE button to pause the washer. Then, push the blanket down, and press the START/PAUSE button again to resume washing.



## HOW TO USE THE CUSTOMIZED PROGRAM

You can set WASH, RINSE, SPIN and adjust operating time freely according to your washing preferences.

### PROCEDURE

- Press The POWER ON/OFF button.
- Press the PROGRAM button to select the program you want.

PROGRAM CHOOSING GUIDE		
PROGRAM	WATER POWER	SUITABLE CLOTHES
NORMAL	Standard	Normal Clothes
CUSTOM	Standard	All kinds of clothes
HEAVY DUTY	Strong	Dirty clothes like working coat
ECO-SPEEDY	Standard	Less Dirty
BLANKET	Blanket	Blanket or bulky
DELICATE	Soft	Ladies' innerwear, articles with embroidery

- Press the FUNCTION button to select the process and time
- Press FUNCTION button to choose cycle you prefer. The light moves from right when pressed.

SOAK → WASH → RINSE → SPIN → PRESET

- Press SET button to choose SOAK, WASH, SPIN time and RINSE time.

• **SOAK time indicating** 0 → 5 → 10 → ... → 35 → 40 min.

(This function is not available for DELICATE/BLANKET course)

• **WASH time indicating** 0 → 1 → 2 → ... → 19 → 20 min.

• **RINSE time indicating** 0 → 1 → 1. → 2 → 2. → 3 → 3. → 4 → 4. times

(The number means times and "." means Overflow Rinse)

• **SPIN time indicating** 0 → 1 → 2 → ... → 8 → 9 min.

(Except the DELICATE course)

0 → 1 → 2 → 3 min.

(For DELICATE course)

• **PRESET time indicating** 0 → 1 → 2 ... 23 → 24 hours.

(Except the DELICATE course)

- Press the WATER LEVEL button, choose proper water level.
  - Add detergent.
- Close the washer lid
- Press the START/PAUSE button.
  - At the end of the cycle, the buzzer will sound.
  - The appliance will memorize the last customized selection mode.

## HOW TO USE PRESET WASHING

- The preset time means the washing end time.
- Before using Preset Washing, turn on the water supply and drainage hose to avoid water leakage.

### PROCEDURE

1. Press POWER ON/OFF button.
2. Select PROGRAM or FUNCTION as required.
3. Press the PROCESS button until the PRESET light flashes. Press SET button to select the required preset time (washing end time). PRESET indicate  $6 \rightarrow 7 \rightarrow 8 \rightarrow \dots \rightarrow 24 \rightarrow 0 \rightarrow 1 \dots \rightarrow 5$  (hours)
4. Select water level if necessary.
  - Add detergent.
5. Close the washer lid.
6. Press the START/PAUSE button.
  - After the PRESET has started, the corresponding light will be turned on, and other lights will switch off approximately one minute later.
  - Preset function does not work with DELICATE wash.
  - To check the PRESET status, press the SET button, The procedure status will be displayed for 5 seconds.
  - To cancel the PRESET, shut off the power.
  - To change the PRESET time, press the PRESET button again after cancelling it.

## VARIOUS FUNCTIONS

### SHOWER RINSE

It occurs during the last spinning period of washing program. The water is showered onto the clothes to take off foam and dirt.

### WATER SAVER RINSE

It is common rinse. You set the water level for rinse. When the machine runs to rinse program, water flows into the inner tub to the special level and stops. Then machine will rinse.

### OVERFLOW RINSE

It will use more water than the set water level. When the machine runs to rinse program, water flows into the inner tub to the special level, but do not stops. Water continues flows in and flow out from overflow gap to take off foam and dirt.

- For point 1, if you cancel the shower rinse, it will change to water saver rinse or overflow rinse. It depends on what you set. For example, under CUSTOM, you cancel the shower rinse, and choose "2" for rinse. There will be 2 times of water saver rinse; if you choose "2." for rinse. There will be 2 times of overflow rinse.

#### How To Set

- Press POWER ON/OFF button to switch on the power, and press the SET button for 4 seconds. To restore it, repeat above steps or pull out the plug.

### MEMORY FUNCTION

When NORMAL, CUSTOM or HEAVY program is selected, 15 seconds after starting, the appliance will memorize this program and begin to operate under the same program setting when the washer is used next.

- This function is not available for DELICATE/BLANKET program.
- PRESET and WATER LEVEL will not be remembered.
- The SOAK, WASH, RINSE and SPIN for CUSTOM program will be remembered.

## VARIOUS FUNCTIONS

### WATER LEVEL SETTING

Choose the desired water level during the WASH/RINSE process.

#### Method:

1. Press FUNCTION button till WASH light flashes
2. Press the WATER LEVEL button to choose the desired water level, press SET button to set wash time.
3. Then press the FUNCTION button again till RINSE light flashes, press WATER LEVEL button again to choose the appropriate water level.
4. Press SET button to set RINSE time and RINSE type.
5. Press the FUNCTION button till SPIN light flashes, press the SET button to set SPIN time.
6. Press START/PAUSE button to commence washing according to your settings.

### TWO STEPS CLEANING FUNCTION

The washer will start washing when water reaches below 2 levels as set. By this, the washer starts working with more density of detergent.

- This function will not be affected, if water level 1 or 2 is selected, and if DELICATE or BLANKET program is selected.
- When SOAK is selected, this function will not be affected after soaking.

### CHILD LOCK FUNCTION

This function avoids accidental opening of the washer by children, etc.

#### Method of Setting

Press the POWER ON/OFF button to switch on the power, and press the PROGRAM button for 4 seconds until the buzzer sounds. To restore it, repeat the above steps or pull out the plug.

- The control panel lights will illuminate to indicate E5 if the washer lid is open during operation when CHILD LOCK function is selected.

### CANCELLING THE END BUZZER

If you select this function, the buzzer will not sound at the end of the wash. This is suitable for washing clothes at night.

#### Method of Cancelling

Press the POWER ON/OFF button to switch on the power, and press the START/PAUSE button for 4 seconds until the buzzer sounds. To restore it, repeat the above steps or pull out the plug.

### HOW TO DRAIN RESIDUAL WATER

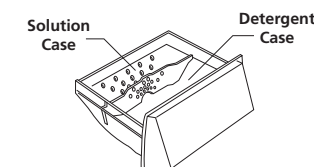
- This function will set the drainage valve to expel any residual water inside the washer for a minutes.
- Press the POWER ON/OFF button to switch on the power, and press the FUNCTION button for 4 seconds until the buzzer sounds. To restore, repeat the above steps or pull out the plug

### MAXI SOLVE

Maxo Solve Case has two parts, Detergent Case & Solution Case.

#### MAXI SOLVE process as follow:

1. Put wash powder into Detergent case.
2. Gentle water current will be injected into the Detergent Case. The detergent will enter into Solution case evenly and slowly. This process will last around 30 seconds.
3. Strong water current will be poured into the Solution Case to dissolve the detergent.
4. In this case, the detergent that enters into the tub has been dissolved in the solution case.





## TROUBLESHOOTING

### 1. During Washing or Rinsing, water continues to flow

Water is automatically added due to decreasing water levels.

### 2. Spin tub turns or stops intermittently at the beginning of the spin cycle

Intermittent spinning gives a better spin effect

### 3. No water drainage during Overflow Rinse

This is the result of lower water level set or lower water pressure

### 4. Water flows in and rinses during spin cycle

This automatic correction balances unequal distribution of clothes inside the tub.

### 5. Sound of water flowing after spin cycle

This is the sound of liquid being balanced inside the balance ring to help reduce vibration during spinning.

### 6. Control panel is still lit after powering off

The "Memory Function" is activated

### 7. Washer powers off and fails to operate

Reset the program once more

## TROUBLESHOOTING GUIDE

### WARNING

If malfunction occurs during operation, check the following before calling the authorized service center.

### TROUBLE INDICATION

When the following occur, the microcomputer will detect the abnormal condition and electronic buzzer sounds for approximately 10 seconds and the indicators flash as shown below. At the same time, the washer stops operation.

**NOTE:** The trouble indicators can be released by pressing the STAR/PAUSE button once, if you want to release the emergency stop, then press START/PAUSE button again to restart the operation.

NATURE OF PROBLEM	TROUBLE INDICATION	WHERE TO CHECK
The washer does not work at all		<ul style="list-style-type: none"> <li>Press the POWER ON/OFF button.</li> <li>Press the START/PAUSE button.</li> <li>Press the PRESET button.</li> <li>Check whether the fuse or circuit breaker has been activated.</li> </ul>
Water does not flow into the Wash/Spin tub	E1	<ul style="list-style-type: none"> <li>Turn the water supply tap on.</li> <li>Check whether the water supply has been cut off.</li> <li>Check whether the metal filter of the water Inlet is clogged.</li> <li>Check whether water pressure is too low.</li> </ul>
Water does not drain out	E2	<ul style="list-style-type: none"> <li>Lay down the Drainage Hose from the hookhole.</li> <li>Check the Drainage Hose for any obstructions.</li> <li>Check whether the Drainage Hose is clogged.</li> <li>Check whether the Drainage Hose is too high off the ground.</li> </ul>
The washer does not spin	E3	<ul style="list-style-type: none"> <li>Check whether the laundry has shifted to one side of the Wash/Spin Tub.</li> <li>Check whether the washer is on level surface.</li> </ul>
	E4	<ul style="list-style-type: none"> <li>Close the washer lid</li> </ul>
The buzzer keep beeping Keeps beeping	E5	<ul style="list-style-type: none"> <li>Check whether the CHILD LOCK is set.</li> <li>Close the washer lid.</li> </ul>
Other troubles	EA EC	<ul style="list-style-type: none"> <li>Press the POWER ON/OFF button to turn off the power, call the authorized service center.</li> </ul>

## SPECIFICATIONS

STYLE	AUTOMATIC WASHING MACHINE		
	MODEL NO.	MWM-680FA	MWM-780FA
RATED VOLTAGE	220–240V~		
RATED FREQUENCY	50–60Hz		
RATED WASH CAPACITY	6.0kg	7.3kg	8.5kg
RATED INPUT POWER	300W	330W	400W

## WARNING

**This appliance must be earthed.**


For washer plug top 3 pin (For BS standard Plug with 13 Amp Fuse)

**IMPORTANT**

The wires in this mains lead are coloured in accordance with following code:

Green/Yellow: Earth      Light Blue: Neutral      Brown: Live

As the colours of the wires in the mains lead of this appliance may not correspond with the coloured marking identifying the terminals in your plug, proceed as follows:

- The wire which is coloured green and yellow must be connected to the terminal in the plug marked with the letter E or by the earth symbol 
- The wire which is coloured light blue must be connected to the terminal marked with the letter N or coloured white.
- The wire which is coloured brown must be connected to the terminal marked with the letter L or coloured black.

**THIS APPLIANCE IS INTENDED FOR HOUSEHOLD USE ONLY.**