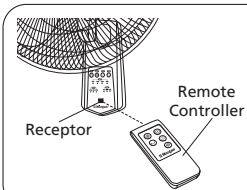


## USING THE REMOTE CONTROL CORRECTLY



- Point the remote controller at the receptor on the base of fan stand and press the desired button.
- The remote control will work at a distance of up to about six meters and at an angle of 60 degree from right or left of the receptor.
- The batteries must be removed from the remote controller before it is scrapped to ensure they are disposed of safely.

## ACCESSORIES



A. Remote Control (1)

B. Mounting (1)

C. Screw (3)

## RULES FOR SAFE OPERATION

1. Never insert fingers, pencils or any other objects through the grille when fan is in operation.
2. Disconnect the fan when moving from one location to another.
3. Disconnect the fan when removing grilles for cleaning.
4. Ensure fan is placed on a stable surface when operating to avoid overturning.
5. DO NOT expose the fan to rain, water or other liquids, as it may damage the motor and pose a safety hazard.

## OVERHEAT PROTECTION OF THE MOTOR

The motor has a built-in thermal-fuse that cuts off the power supply if it is overheated. This prevents the plastic parts of the fan from damage and deformation due to the high temperatures caused by an overheated motor.

## CLEANING

- Be sure to unplug from the electrical supply before cleaning.
- Plastic parts should be cleaned with mild soap and a damp cloth or sponge. Thoroughly remove soap film with clean water.
- To disassemble each part, reverse the assembly order.

### CAUTION:

If the power cord is damaged, it is strongly recommended to have it serviced an authorized service agent.

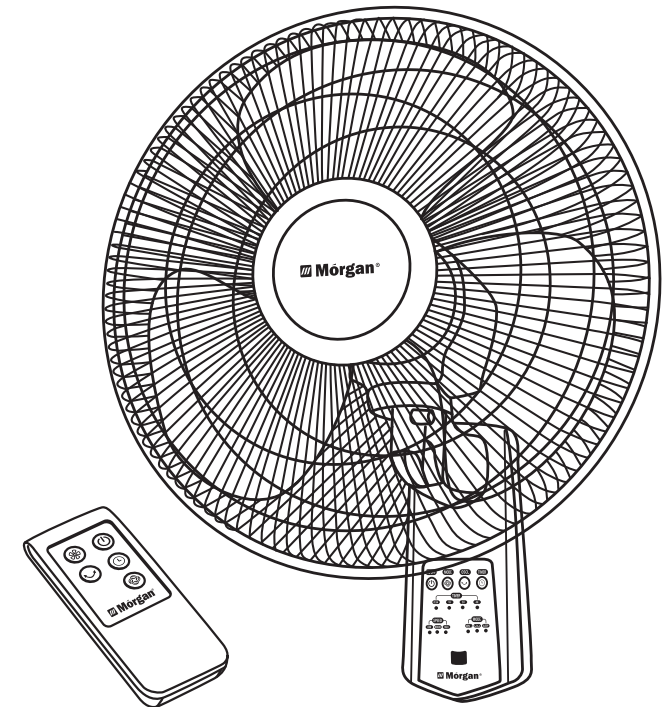


E-mail: [electrical.appliance@dksh.com](mailto:electrical.appliance@dksh.com)  
[www.morgan.my](http://www.morgan.my)

[facebook.com/morganappliances](https://www.facebook.com/morganappliances)

# Morgan®

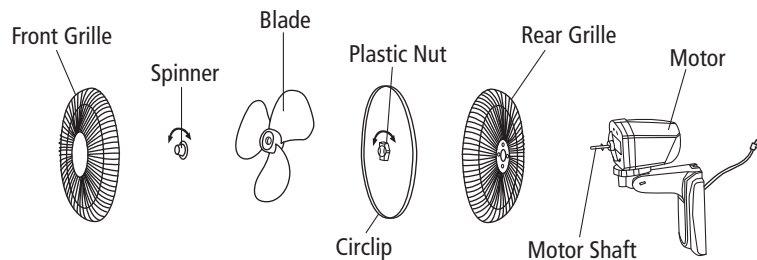
## USER MANUAL



## 3 Speed Remote-Control Wall Fan

MWF-NB165RT

## PARTS IDENTIFICATION



## BLADE AND GRILLE ASSEMBLY

**STEP 1:** Unscrew the spinner clockwise and the nut counter clockwise to remove both blade and grille.

**STEP 2:** Position the rear grille with handle facing upwards.

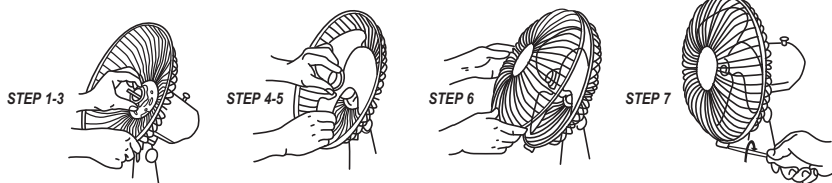
**STEP 3:** Screw on plastic nut tightly to attach rear grille.

**STEP 4:** Install the blade onto the shaft until it reaches the retaining pin.

**STEP 5:** Screw spinner onto motor shaft counter clockwise

**STEP 6:** Press the rim of the front grille onto the rear guard until the front guard is fitted tightly.

**STEP 7:** Secure both grilles firmly by tightening the fan Grille's clip



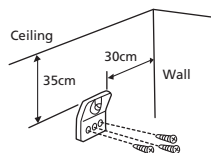
## INSTALLATION

The fan should be installed on a solid wooden or pillar which stands vertically to the floor.

**Caution:** To prevent the fan from falling off, do not install it on walls less than 10cm thick or made of materials that are easily damaged.

### 1. INSTALLING THE MOUNTING BRACKET

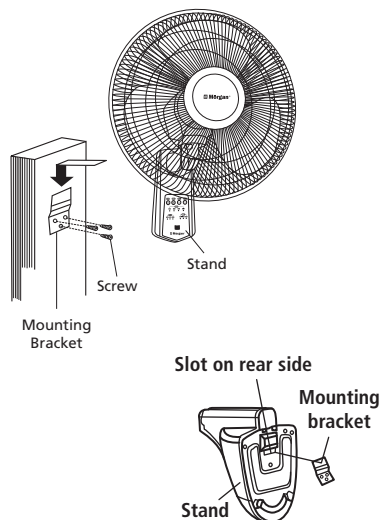
Fix the supplied mounting bracket firmly onto the wall using the two supplied screws.



**NOTE:** The bracket should be positioned at least 35cm from the ceiling and at least 30cm from adjoining wall.

### 2. INSTALLING THE STAND

Mount the stand on the bracket by inserting the bracket catch into the slot on the stand.



## REMOTE CONTROLLER OPERATION



### ON / OFF BUTTON

- This key is for switching on the fan. The fan will automatically operate at medium speed to speed up the rotation. After 2 seconds it will automatically switch to low speed.

### TIMER BUTTON

- When this key is pressed repeatedly or continuously, the set operation time will increase by 0.5 hour and up to maximum 7.5 hours in 15 intervals.
- For instance, if you wish to set the operation duration for is 5.5 hours, this key must be pressed repeatedly so that the pilot lamps for 0.5 1 and 4 hours are illuminated. This means that the set time is  $0.5 + 1 + 4 = 5.5$  hours.
- The timer setting indicated by the pilot lamp will decrease gradually by an interval of 0.5 hours.
- Do not press the TIMER key when you prefer continuous operation (all pilot lamps will not illuminate)

### SPEED BUTTON

- After the fan has started, this key serves as a speed selector in the sequence from LOW-MEDIUM-HIGH-LOW-MEDIUM when this key being pressed repeatedly or continuously.

### OSCILLATION BUTTON

- This key starts or stops the fan oscillation. To select direction, press this key until the fan moves to the desired direction and then release the key.

**Important note:** Do not try to change the fan direction forcibly by hand; otherwise the fan will be damaged.

### WIND MODE BUTTON (applies only for remote control)

- This key is a selector for wind mode. The wind mode changes from NORMAL-NATURAL-SLEEP-NORMAL-NATURAL wind when this key is pressed.

The features of 2 wind modes are as follows:

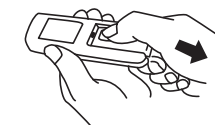
**NORMAL WIND:** The fan delivers air constantly with high, medium or low speed set by the SPEED button.

**NATURAL WIND:** The fan delivers air according to the program preset in advance and simulating natural wind. The wind varies from strong to gentle and vice-versa for a natural feel.

**SLEEP WIND:** The wind varies from strong to gentle.

## INSERT THE BATTERIES (not included)

- Press down on the battery compartment cover and slide it out.
- Insert two batteries, making sure that the positive terminals are facing the proper way.
- Replace the cover.



**NOTES :** Use only "AAA" manganese or alkaline batteries.

