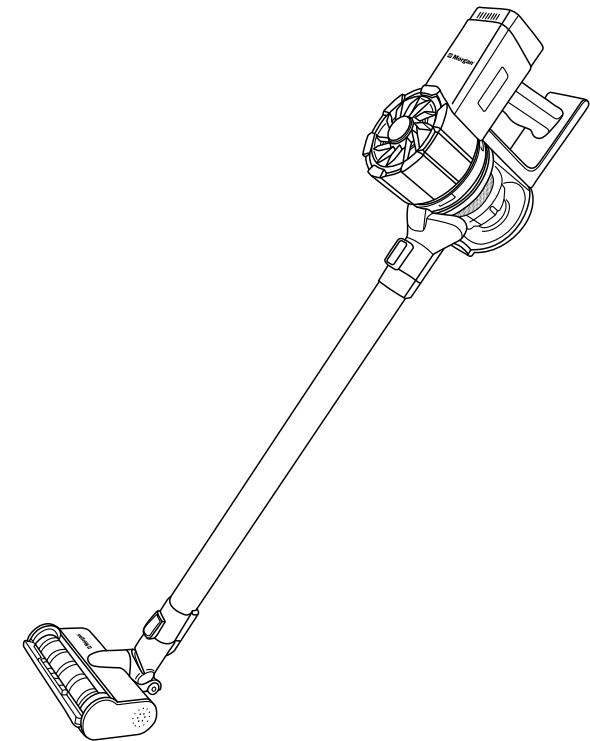


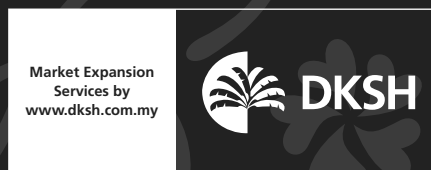
 **Mórgan®**

USER MANUAL



**Cordless 3 in 1
Stick/Handheld
Vacuum Cleaner** MVC-CHS180DB

 **Mórgan®**



E-mail: electrical.appliance@dksh.com
www.morgan.my

 [facebook.com/morganappliances](https://www.facebook.com/morganappliances)

C O N T E N T S

3 Important Safeguards

4 Parts Identification

4 Specifications

5 Operating Instructions

7 Troubleshooting

7 Care & Cleaning

Thank you for purchasing a quality MORGAN appliance. We trust that you will have a pleasant experience with your new product. To guarantee safety and best efficiency, please read this manual carefully and keep a copy for future reference.

IMPORTANT SAFEGUARDS

Please read this instruction manual carefully and keep it in a safe place for future reference.

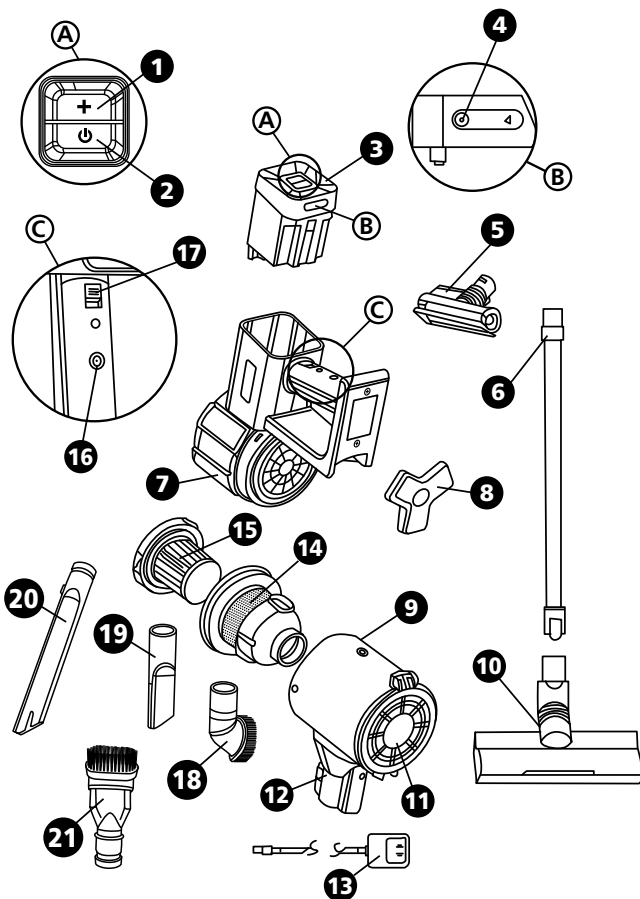
- Remove all packing materials from this product before use.
- Ensure the voltage indicated on the adapter corresponds to the local power supply voltage before operating the appliance.
- Always inspect the appliance before operating for the first time.
- Do not operate the appliance or the adapter if it has been damaged in any manner.
- Do not vacuum the following to avoid damaging the appliance or prevent a fire hazard.
 - Burning or smoking substances such as hot charcoal, burning cigarette and more.
 - Flammable and explosive products such as gasoline and alcohol.
 - Sharp fragments such as glass, construction materials, nails and so forth.
 - Water, chemicals and corrosive liquids.
- Disconnect the power cord from the power supply when cleaning, repairing or when appliance is not in use. Remember do not immerse the main vacuum cleaner in water, avoid approaching to heating equipment or exposure to the sun to avoid fire.
- This appliance may be used by children aged 8 years and above and persons whose physical, perceptive or mental skills are impaired or who are inexperienced or not knowledgeable about the appliance as long as they are supervised or informed and made aware of the safe use of the appliance and the encountered dangers.
- Children should not be allowed to play with the appliance.
- Cleaning and user maintenance should not be performed by children unless they are supervised by an adult.
- Do not operate the appliance if it has malfunctioned or is damaged in any manner. Contact an authorized service for inspection and repairs.
- Avoid operating the appliance continuously as this may cause the suction inlet to be obstructed. This will generate excessive heat which can damage the motor.
- If the power adapter malfunctions or is damaged, use only original parts or parts recommended by the manufacturer.
- It is recommended to charge the appliance once every three (3) months if it is not used frequently. Ensure battery is removed from the appliance body before discarding for further recycling.

WARNING:

- Use only a dedicated adapter for charging. Ensure proper ventilation for optimal heat dissipation.
- Do not operate or store in a high temperature environment above 50°C.
- Battery pack is detachable

PARTS IDENTIFICATION

1. Speed Switch Button
2. On/Off Button
3. Battery Pack
4. Charging Port 1
5. Motorized Dust Mite Brush
6. Tube
7. Main Body
8. Wall Hanger
9. Dust Cup
10. LED Multi-tasker Power Brush
11. Dust Cup Cover
12. Connector
13. Adapter
14. Cyclone Stainless Steel Mesh Filter
15. Hepa Filter
16. Charging Port 2
17. Battery Lock Catch
18. Ellipse Brush
19. Crevice Tool
20. Long Nozzle
21. 2 in 1 Dusting brush



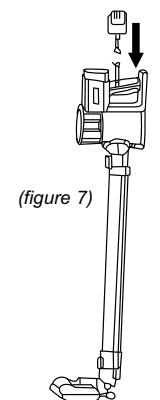
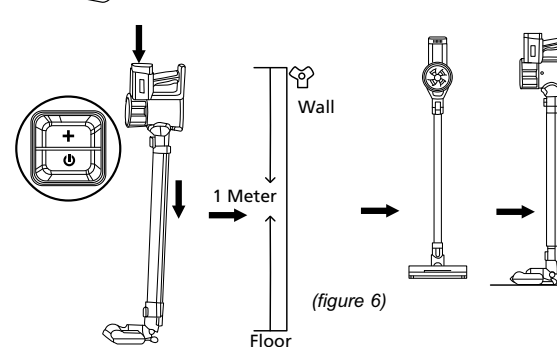
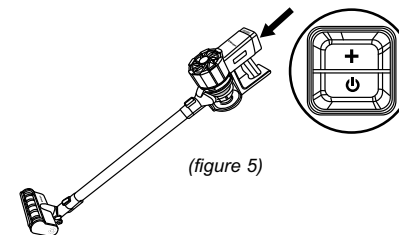
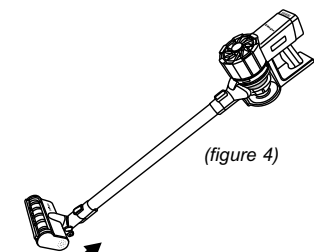
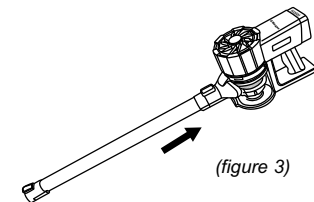
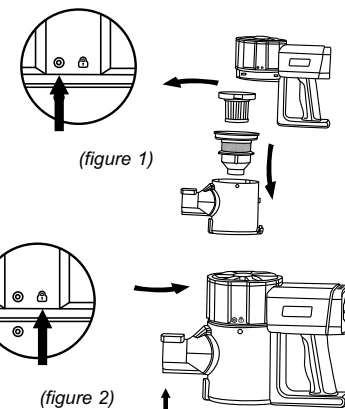
SPECIFICATIONS

| | |
|--------------------------------|---------------------|
| MODEL | MVC-CHS180DB |
| ADAPTER INPUT VOLTAGE | 100-240V~ |
| INPUT FREQUENCY | 50/60Hz |
| ADAPTER OUTPUT VOLTAGE | 27V |
| OUTPUT CURRENT | 500-750mA |
| MACHINE OPERATING POWER | 180W |
| MAX. SUCTION | ≥12000PA |
| DUST BOX CAPACITY | 0.8L |

OPERATING INSTRUCTIONS

AS AN UPRIGHT VACUUM CLEANER

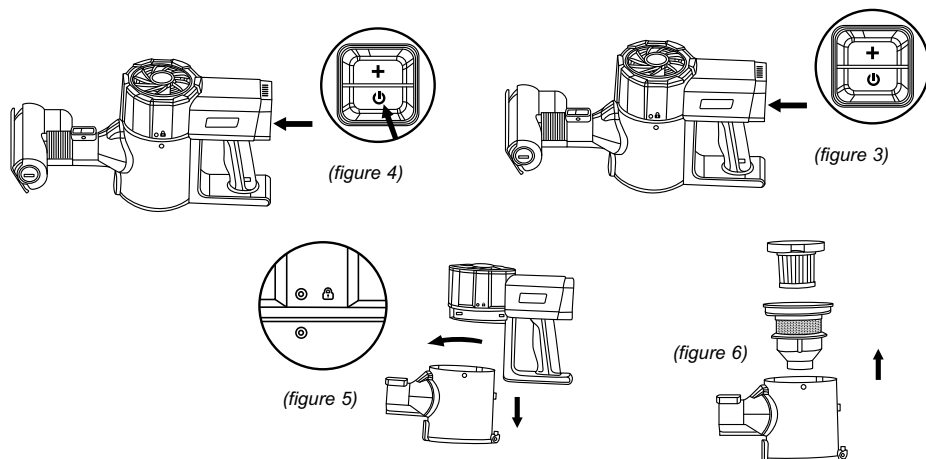
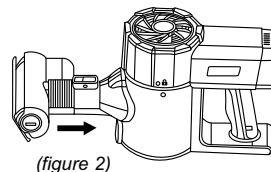
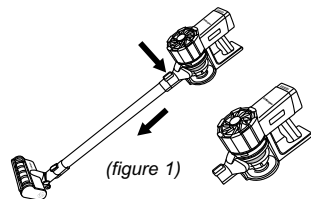
1. Before operating (see Figure 1), rotate the dust cup to the position to correspond to the mark "O", ensuring that the dust cup is equipped with a Cyclone S.S mesh filter and HEPA filter.
2. Rotate the dust cup (see Figure 2) back to the marked position and "lock" until a "click" sound is heard.
3. Install the tube (the side without button) into the dust cup and secure it (Figure 3).
4. Install the LED Multi-tasker power brush into the tube (the side with button) and secure it (Figure 4).
5. Press the ON/OFF button (Figure 5) to begin operation. Press the + button to alternate between high and standard speeds. Press the ON/OFF button again to stop operation.
6. Install the wall hanger firmly into a wall of about 1 meter from the ground and near to a power supply. Place and store the appliance on the wall hanger. (Figure 6)
7. Ensure the appliance is OFF in the upright standing position. Connect the power adapter to the power supply. Ensure the power supplier is OFF.
8. Insert the power adapter into the charging port on the appliance and turn on the power supply. The appliance is charging when the blue light begins flashing. (Figure 7)



OPERATING INSTRUCTIONS

AS A COMPACT VACUUM CLEANER

1. Detach the tube from the suction inlet of the dust cup. (Figure 1)
2. Insert the Motorized Dust Mite Brush into the suction inlet of the dust cup. (Figure 2)
3. Press the ON/OFF button (Figure 3) to operate. Press the + button to alternate between high speed and standard speeds.
4. Press the ON/OFF button again to stop. (Figure 4)
5. Rotate the dust cup to the "O" position to detach the dust cup. (Figure 5)
6. Remove the filter from dust cup for cleaning and discard contents. (Figure 6)



INDICATOR LIGHT NOTIFICATIONS

1. Normal operation: The blue indicator light stays on.
2. Turn off the power: the blue light is off.
3. Low battery: the blue indicator light flashes.
4. Fully charged: The blue indicator light stays on.
5. When charging continuously: the blue indicator light flashes.

TROUBLESHOOTING

Please perform these troubleshooting before sending the appliance to the service center.

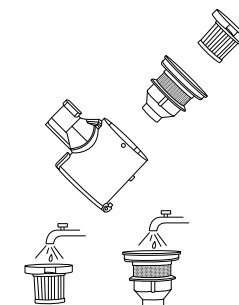
| PROBLEM | POSSIBLE CAUSES | SOLUTIONS |
|-------------------------------------|--|--|
| Low suction power or abnormal noise | • Motor is overheating | • Stop operation |
| Brush or filter block | • Check if air inlet is obstructed by dust. • Check if dust box is full. • Check if the filter is blocked. | • Empty the dust box. • Clean the filter. |
| Appliance not working | • Ensure battery still has power | • Charge the battery • Clean the filter & restart the machine |

CARE & CLEANING

- Open the dust cup, detach the filter and wash it with water.
- Allow it to dry naturally.

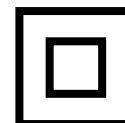
PRECAUTIONS

- Filter and dust cup should be cleaned at least 1-3 times a month if the machine is used every day.
- Empty and clean the dust cup if the sound of the appliance is louder than usual.
- The appliance should be operated with the filter installed.
- Before operating, inspect if the filter is installed or damaged.



SERVICING OF DOUBLE-INSULATED APPLIANCES

A double-insulated appliance is marked with one or more of the following: The words "DOUBLE INSULATION" or "DOUBLE INSULATED" or the double insulation symbol.



In a double-insulated appliance, two systems of insulation are provided instead of grounding. No grounding means is provided on a double-insulated appliance, nor should a means for grounding be added to the appliance. Servicing a double-insulated appliance required extreme care and knowledge of the system, and should be done only by qualified service personnel. Replacement parts for a double-insulated appliance must be identical to the parts they replace.

POLARIZATION INSTRUCTIONS

To reduce the risk of electric shock, this appliance has a polarized plug (one blade is wider than the other). This plug will fit in a polarized outlet only one way. If the plug does not fit fully in the outlet, reverse the plug. If it still does not fit, contact a qualified electrician to install the proper outlet. Do not modify the power plug in any way.