

 **Mórgan®**

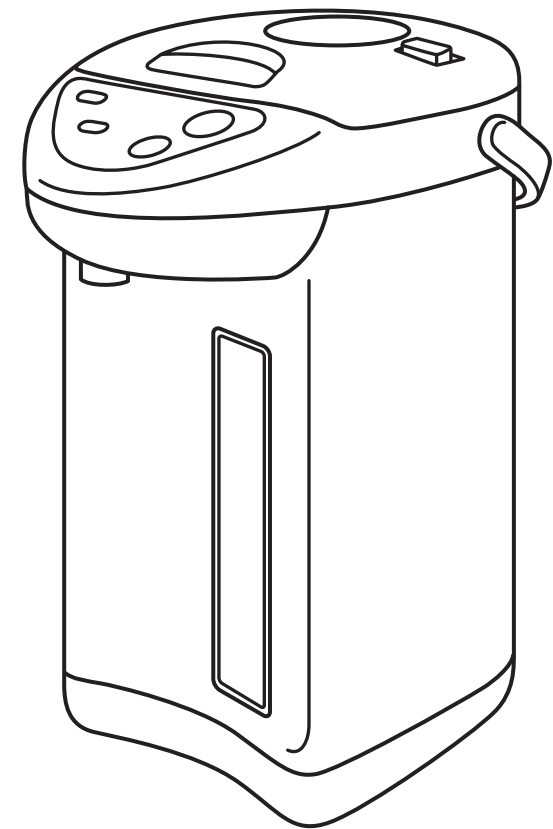
 **Mórgan®**

Market Expansion
Services by
www.dksh.com



E-mail: electrical.appliance@dksh.com

USER MANUAL



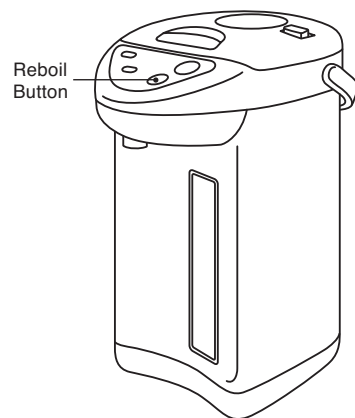
Thermo Pot

MTP-TB142L
MTP-TB150L

WHEN STARTING RE-BOIL

Re-boil the hot water under the Keep warm mode.

1. To re-boil the water, push the REBOIL button. But before doing so it is important to first check the amount of water remaining in the pot.
2. When the remaining water level is less than the Refill mark on the water level gauge panel, be sure to add water.
3. When the pot is full with water at the Keep warm mode, the keep warm water will be re-boiled in about 3 minutes.



HOW TO CLEAN

Be sure to disconnect the Power supply plug, empty the pot before cleaning.

INNER POT

- Wash with a sponge and then rinse with clean water.

OUTER LID AND BODY

- Wipe with a wet soft cloth.
- Do not soak and wash the whole appliance in water.

DISCOLOURING OF THE INNER POT

- This is caused by oxidization of mineral content in the tap water. Which can be remove by using nylon brush.
1. Cut a lemon into four pieces, wrap the lemon in cloth and place in the inner pot.
 2. Pour in water up to the full level indicator.
 3. Boil and then keep warm for about 1 hour.
 4. Pour out the water and use a nylon brush to clean the pot.
 5. To remove the smell of the lemon, boil water again and dispose the water.

CAUTION: Do not use benzene, solvents, cleaning powder or brushes with hard bristles. Do not dry in a dish dryer.

C O N T E N T S

4-5 Important Safeguards

6 Safety Precautions

7 Special Instructions

7 Parts Identification

8-9 How To Use

10 When Starting Re-boil

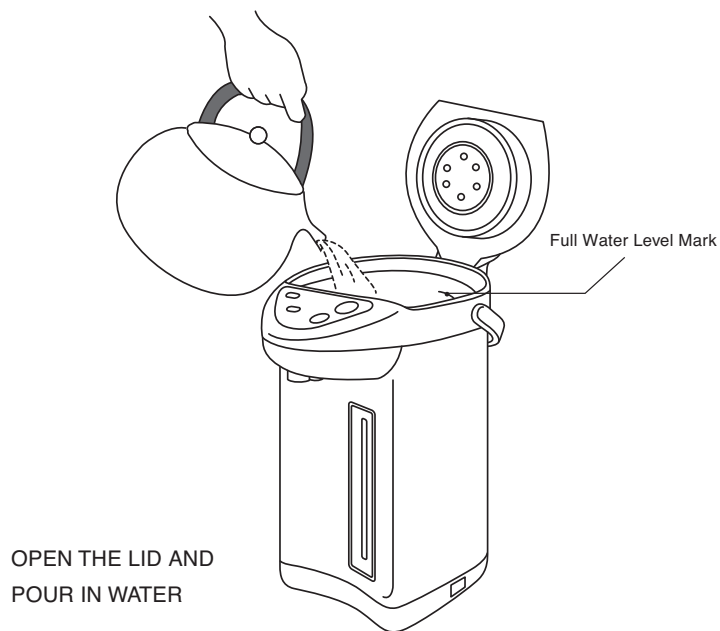
10 How To Clean

11 Troubleshooting

HOW TO USE

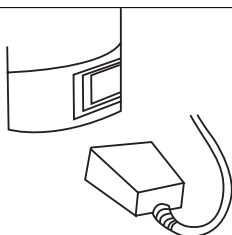
USING THE POT FOR THE FIRST TIME

1. Fill the pot to full level & boil water.
2. Pour out water by using the manual pump or dispenser button. (There may be some odor during first time usage.)
3. Empty pot before refilling.
4. Do not pour water into the pot directly from the water tap. Water splash over electrical components may cause malfunction and electric shock hazard.
5. Do not fill pot over the engraved full level mark. Hot water may overflow when boiled. On the other hand, if the water level is below the refill marks, it will cause heating element to malfunction. Close the top lid tightly until a click sound is heard.
6. Do not use force to close upper lid.



BOIL WATER

1. Connect the power cord to the pot before connecting it to the power supply.



IMPORTANT SAFEGUARDS

CAUTION

- Do not embrace, tilt or shake the unit or carry by the lid even when the dispenser is locked as hot water may leak through the dispensing spout and steam vent. This may result in burns, scalds or other body injuries.



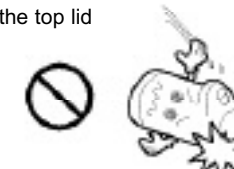
- Practise caution when closing top lid to avoid hot water from splashing.



- Keep this product out of children's reach.



- As an added safety precaution, ALWAYS keep the top lid closed tightly.



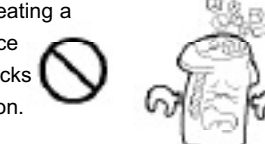
- Do not touch the steam outlet with your hand. The steam may burn your skin.



- Do not drain remaining hot water with the lid attached. The lid may come off and the hot water may splash, causing burns.



- Do not use this product as an ice-cooler or put ice cubes into it as condensation may occur, creating a potential source of electric shocks and malfunction.



- Do not touch the plug of the unit. Do not allow children from touching the plug of the unit. Not observing these precautions may result in severe burns, electric shock and other injuries.



- Do not operate the unit with wet hands as it may cause electric shocks.



SAFETY PRECAUTIONS

- Avoid opening the top lid or dispense water during the course of boiling to prevent hot water from splashing.



- Do not boil anything other than water as the water tube may get clogged and the inner container may burn or corrode.

- Never place the pot on a rough surface or use the pot near curtains or on the carpet.



- Clean the pot when water inside it completely cold.



- Do not overturn the pot to or use the water dispenser to drain out water. This cause hot water to splash resulting in burns and scalds.



- Do not lift, shake, tilt or carry the unit or carry it by the lid as you may accidentally press the button for opening the top lid. Hot water may splash out resulting in burns and scalds.



- Ensure the water level in the pot is never less than one litre to avoid damaging the inner lid.



- Do not place the pot near any wall. Always ensure the space between the pot and wall is not less than 30cm.



- If the power cord is damaged, please contact the nearest authorised Morgan Service Centre to replace it.

SPECIFICATIONS

RATED VOLTAGE / FREQUENCY	220-240V, 50/60HZ
RATED WATTAGE	730W
CAPACITY	4.2 / 5.0 LT

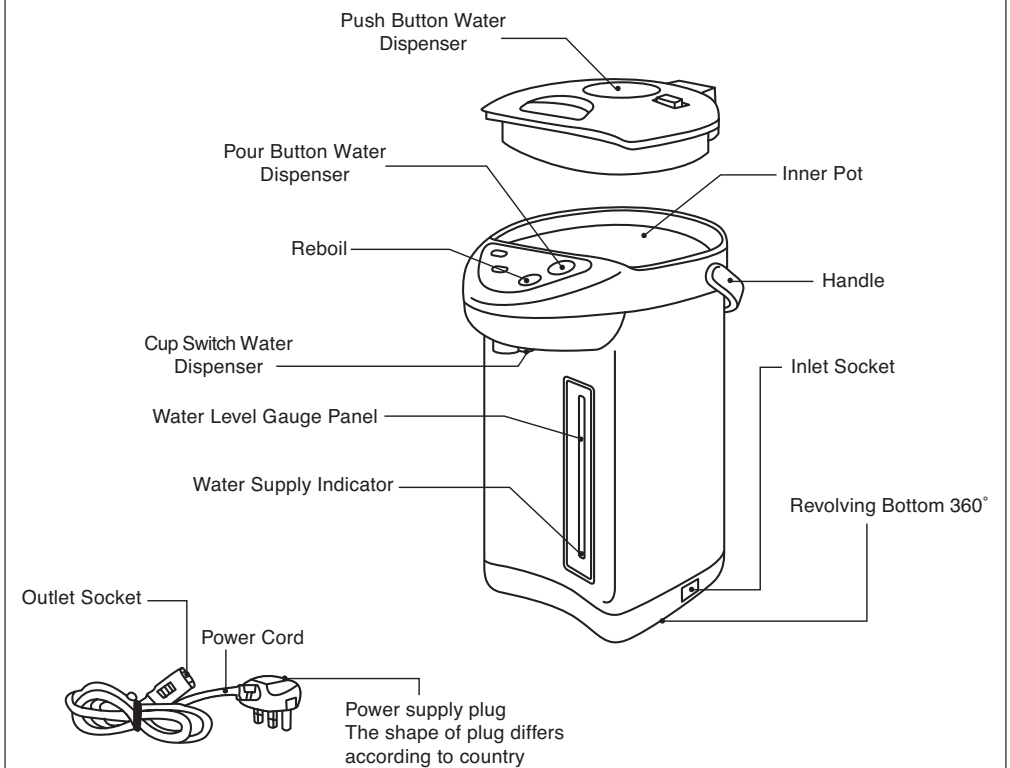
- Using the electric thermo pot in areas where sea level is above 300 metres may cause the unit to malfunction.

SPECIAL INSTRUCTIONS

A short power supply cord is provided to reduce the hazard resulting from being entangle or trip over a long cord longer extension cord is available and may be used if care is exercised in their usage.

1. The marked electrical rating of the extension cord should be at least identical to the electrical rating of the appliance.
2. The extension cord must be earthed (three wire cord)
3. Where a long cord is used, it should be properly arranged and not drape over the counter top or table where it can be reached by children or tripped over accidentally.

PARTS IDENTIFICATION



IMPORTANT SAFEGUARDS

Read all instructions **BEFORE** using

WARNING

- To avoid circuit overload, do not operate another high-wattage appliance on the same circuit.



- When disconnecting from power source, always hold and pull the plug, and not the power cord



- To avoid risk of fire, electric shock or other injuries - never attempt to disassemble, repair and modify the structure of the unit yourself.



- To protect against a risk of electric shock, do not immerse the product in water or other liquids.



- Always ensure that the fill water volume should never be higher than the FULL-scale level.

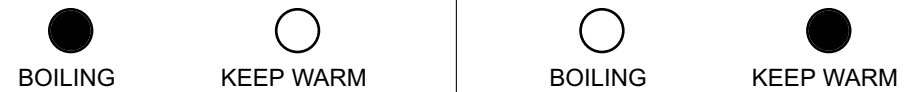


- Do not cover the unit with cloth or anything similar on the top.

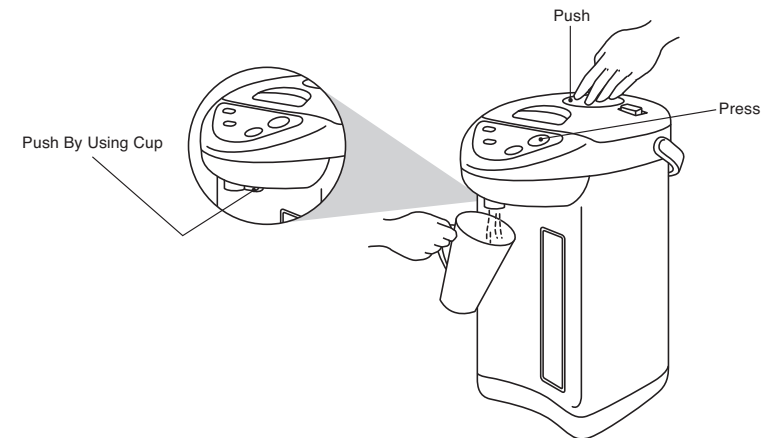


HOW TO USE

- After connecting to the power supply, the power indicator light will be lit and the pot will begin boiling the water.
 - Once the water is boiled, it automatically switch to "Keep Warm" mode.



- While water is boiling, never open the upper lid to pour hot water out. To continue Keep warm mode, leave the power on. (As this is not a vacuum bottle, it cannot keep the water warm unless electricity is turned on.)
- 3 Button for Pouring Water
 - Do not press the Push button forcibly as it may cause the hot water to rush out which will cause scalding.
 - When you turn the pot around the power cord attachment will also turn. Handle with care.



AFTER USE

- Disconnect the power supply plug from the outlet, and remove the appliance plug from the air pot.
- Be sure to remove the upper lid when you pour out unused hot water.
- Be sure to pour out unused hot water everyday. If you retain water, water fungus will form.

HOW TO CLEAN USING CITRIC ACID

1. Ensure that the filter net has been installed to the inner container.
2. Pour citric acid into the inner container. Dosage: about 20g for every litre of water.
3. Add cold water to the 'full' mark and stir water thoroughly.
4. Turn on the power immediately and heat until water is boiling then switch to keep warm. Repeat steps if there are still scales inside the inner container.
5. After steps 1 - 4, remove the plug and top cover, empty water from the water drainage mark.
6. Add in cold water, boil accordingly and empty water to remove the taste of lemon (citric acid).

- **Please follow the instructions to use citric acid for cleaning the pot.**
- **Lemon Acid is a food additive and is harmless to humans.**

TROUBLESHOOTING

PROBLEM	REASONS	SOLUTIONS
White or glittery particles suspended in boiled water	Water Scale.	Clean with citric acid
	Water with more minerals (mineral water, water after treated with ionised water purifier) will easily generate scale that may attach onto the inner container or suspend in the water.	Clean with citric acid
Slight smoky odour	Tap water contains more chlorine which may generate a 'chlorine' odour	Press "Reboil" button
	During initial use of this product some smoke or odour may be detected. This is normal with many heating appliances and will not recur after repeated use.	
Water output is lesser than normal or difficulty in dispensing	Check if the filter is clogged	Clean the filter with brush
	After boiling water, bubbles may appear for a while and make it difficult to dispense water.	Open the top cover, dispense water and close it back. (Be careful of steam when opening the top cover)
Hot water dispenses itself	Does water exceed the FULL mark?	Drain some water to lower the water level
Boiling function does not work	The power plug has been disconnected	Reconnect the electricity or insert the power plug
Hot outer cover	Since the unit keeps water warm at a high temperature, the external temperature of the pot may reach 65°C.	This is normal