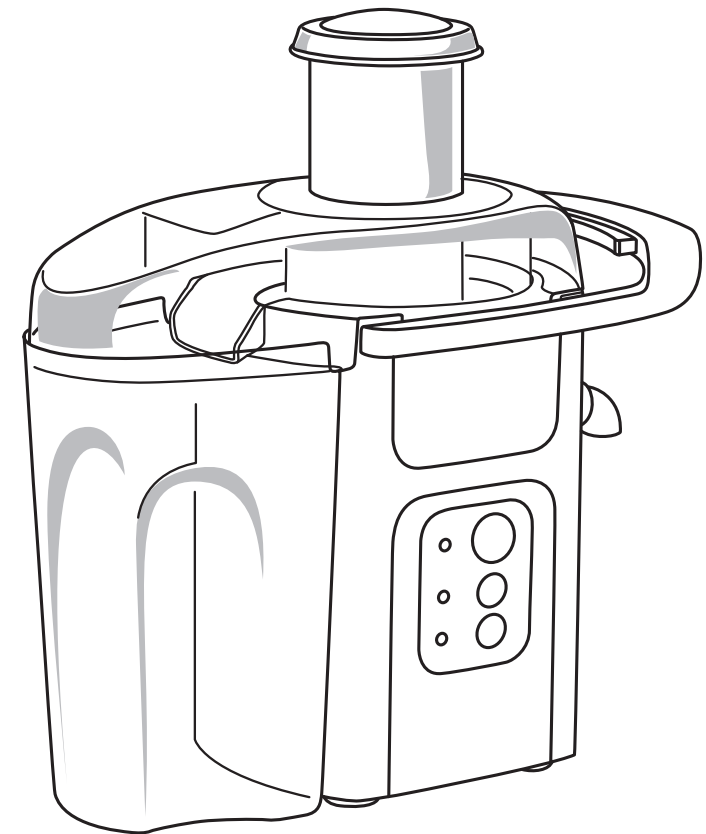


 **Mórgan<sup>®</sup>**

## USER MANUAL



# Juice Extractor

**MJE-SB145W**

 **Mórgan<sup>®</sup>**



DKSH Marketing Services Sdn Bhd (254544-V)  
E-mail: [electrical.appliance@dksh.com](mailto:electrical.appliance@dksh.com)

# C O N T E N T S

**4** Important Safeguards

**5** Parts Identification

**6** Product Specification

**6-7** Assembling and Disassembling

**8-9** Operating Instructions

**9-10** Cleaning and Maintenance

## IMPORTANT SAFEGUARDS

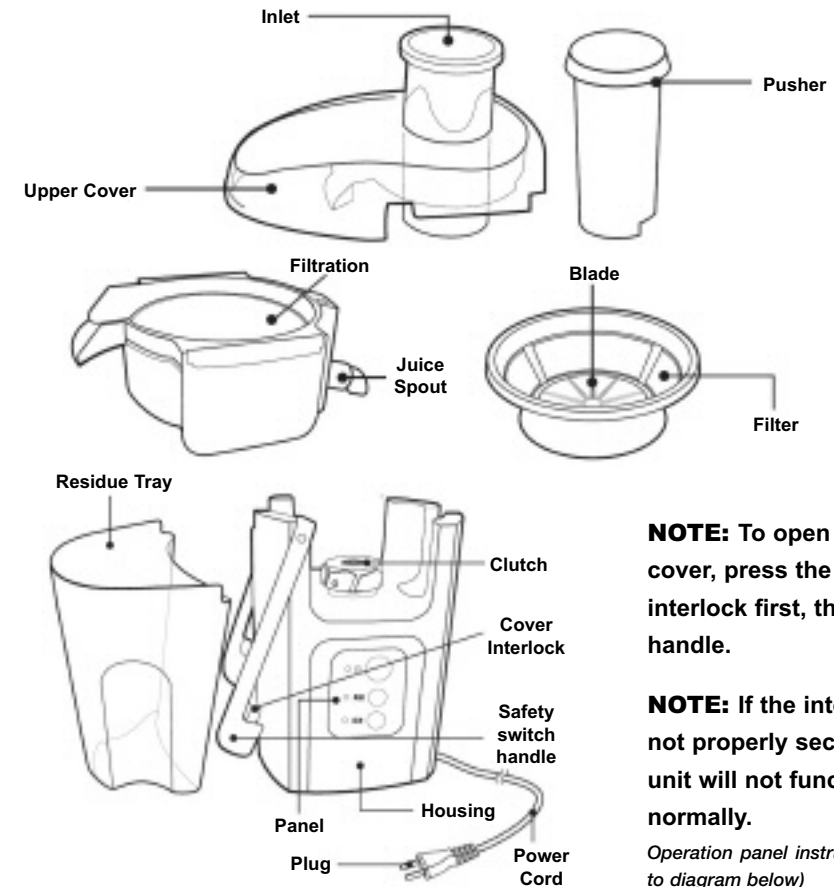
When using electrical appliances, basic safety precautions should always be followed, including the following.

1. Do not attempt to modify, dismantle or repair this appliance without consulting an approved technician. If the appliance needs repairing, you should contact the manufacturer or its authorized service agents for assistance. Otherwise, it may render your warranty void and in certain instances, cause fire, electric shock or bodily injuries.
2. Never immerse the appliance into water or any other liquids to avoid electric shock or malfunction.
3. Close supervision must be exercised at all times when operating this appliance. Do not operate in places that children can reach easily, or allow children, elderly and physically-impaired people to operate without supervision. as there is constant danger of electric shocks or other injuries when the appliance is used against instructions.
4. Never insert spoon, non-food things or fingers into the inlet during operation to avoid accidents and damage to the appliance.
5. Do not disconnect from the power supply by yanking on the power cord. Unplug the power cord by the plug to prevent electric shock or other personal injuries.
6. Do not operate the appliance in damp or wet areas, or operate on unstable surfaces.
7. Always disconnect the power plug from the power supply if the appliance is not in use. Failure to do so may result in short circuit or possible risk of fire.
8. Do not operate the unit if the power cord or plug is damaged or loose, otherwise it will cause electric shock, injury by short circuit, and fire.
9. **WARNING:** The blades are sharp. Never touch the blades with your fingers.
10. Do not damage the power cord by using excessive force, pull, twisting or placing heavy objects on it to prevent the risk of fire and electric shock.
11. Use a socket-outlet rated above 110V/15A separately to minimize the risk of any unforeseen accidents.
12. Never put food that is above 40°C into the container! The high temperature will cause the container to crack and pose a hazardous risk.
13. Make sure the power cord and cable are disconnected when dismantling or moving the unit, otherwise it will damage the power cord and cause fire and electric shock.
14. Do not allow power cord to hang over the edge of table or counter.
15. Do not place the appliance near an open flame for fear of damage to the finishing, malfunction and deformation of the appliance.
16. This appliance is only intended for household use.

**Attention: Always follow the above safety instructions to avoid fire, electric shock, burn, and other potential accidents.**

## PARTS IDENTIFICATION

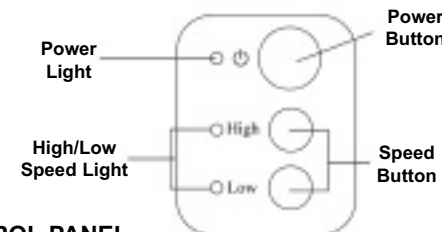
**WARNING:** It is dangerous to insert fingers into the inlet



**NOTE:** To open the cover, press the cover interlock first, then lift the handle.

**NOTE:** If the interlock is not properly secured, the unit will not function normally.

*Operation panel instructions (refer to diagram below)*



### CONTROL PANEL

- Indicating the unit is in standby mode. Even after pressing the speed switch, the power light will remain lit.
- When pressing the High/Low speed button, the blue High/Low speed light will remain lit.

### THE USE OF POWER CORD

- For all electrical appliances, the rated power of extension cord must be at least equivalent to the rated power of electrical appliance.
- No user serviceable parts
- The unit is not self-maintainable
- Please save this manual
- For household use only
- Do not use other than 110V AC

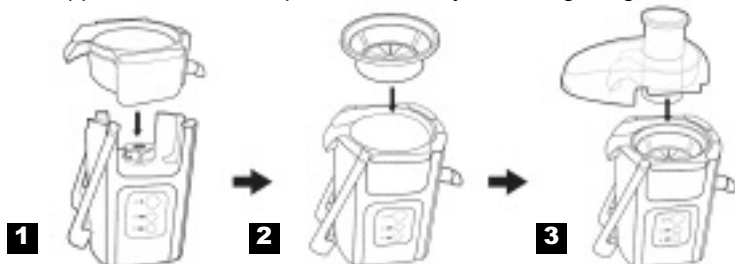
## PRODUCT SPECIFICATION

PRODUCT NAME	MJE-SB145W
RATED VOLTAGE	220-240V~ 50/60Hz
RATED WATTAGE	600-750W
WEIGHT	(About) 4.5KG
DIMENSION	(About) L 39.3 x W 21.7 x H 43 (CM)
RUNNING TIME	Run about five minutes, rest about two minutes, repeat this operation

## ASSEMBLING AND DISMANTLING

### ASSEMBLY

1. Attach the filtration tray to the housing according to figure 1.
2. Attach the filter base set to the filtration tray according to figure 2.
3. Attach the upper-cover on the top of filtration tray according to figure 3.



- ATTENTION:** 1. Ensure the filter base set is attached securely to the top of the clutch.  
2. CAUTION: Blades are sharp & may cause injuries

4. Lock the safety switch handle onto the upper cover tightly according to figure 4. A "click" sound can be heard indicating that the handle is properly secured.
5. Tilt and insert the residue tray to the filtration tray, and press to close to the housing, according to figure 5.
6. To unlock, push the upper-cover interlock first. Then lift the handle gently, according to figure 6.



- ATTENTION:** 1. For the safety of user, the motor will not operate until the safety switch handle is properly secured.  
2. Never plug in or turn on the power before it is completely assembled, to avoid unforeseen accidents or malfunction to the appliance.

## ASSEMBLING AND DISMANTLING

### DISMANTLING

Dismantling is contrary to the method of assembly.

### PROCESSING FRUITS AND VEGETABLES

1. Remove the core seed and skin of the fruit if they are hard. If the size of food is larger than the inlet, cut them into smaller portions. If a hard object is accidentally fed into the unit, shut down the power immediately, and remove the obstruction after the motor has completely come to a halt. CAUTION: Blades are sharp.
2. Because the motor spins at very high speeds, use the appliance only for foods which are difficult to extract (for example apples).

**Apple:** Please cut it into the size that same as the inlet.

**Orange:** Fruits with peel. Peel skin and cut into a size that fits the inlet.

**Rootstock:** Cut into smaller portions to fit into the inlet.

**Leaf:** Roll leaves into scroll-like and feed into the inlet.



- ATTENTION:** 1. Remove grape seeds and insert into the inlet one by one with the food stick pusher immediately. Otherwise small particles will escape through the inlet.  
2. Sticky and soft fruits, like banana and durian, are not suitable for juice extractor, hard fruit like burdock, is not suitable too.  
3. Consume fresh juice immediately to retain its rich vitamins and minerals.

## OPERATING INSTRUCTIONS

1. Ensure the appliance is correctly assembled, then plug in the power.

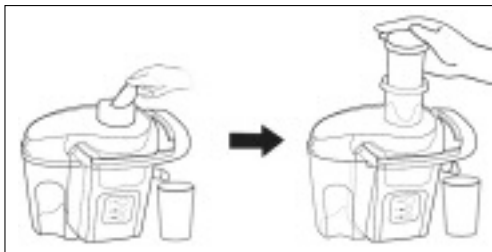
**ATTENTION: The Food Pusher should not remain in the inlet.**



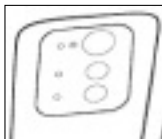
2. Place a cup under the Juice Spout.



3. When pressing the power button, the red power light will flash, indicating the unit is in standby mode. After pressing the speed button, the power light will remain lit.



4. Put the chopped fruit into the inlet, push the food using the food pusher lightly.



5. Select proper speed according the hardness of food:.

- The high speed is suitable for hard food, like carrot, apple etc..
- The low speed is suitable for soft food, like spinach, orange etc..

When pressing the High / Low speed button, the blue speed indicator light will illuminate, meanwhile the red power light will also be lit.

6. Press the power button again after every use to turn the power off. Only then should you remove the food pusher.

**ATTENTION: The stainless steel spinner will be obstructed when used continuously for 10 minutes, affecting the juicing efficiency. It is advisable to stop midway during operation to clean the stainless steel spinner before operating again.**

## OPERATING INSTRUCTIONS

7. **Midway Stop**

Press the speed button again if there is too much pulp. The power light will extinguish, causing the motor to stop working temporarily. Remove the residue tray to remove the pulp. Next, replace the residue tray, then push the speed button again. If the speed of motor is too low and last about 5 seconds, the power will shut off automatically. Push the power button again to restart.

**ATTENTION: 1. During first time use, the appliance will make a sound. This is normal**

**2. Ensure close supervision when appliance is in use.**

**3. Do not operate longer than 5 minutes continuously. If repeated operation is required, allow the unit to rest for about 2 minutes before operating again.**

**4. Do not forcibly push the food pusher. Cut fruit into small portions**

## CLEANING AND MAINTENANCE

### MAINTENANCE

#### CAUTION:

1. Use only mild dish detergent and soft cloth or sponge to clean the unit.
2. Metal brush, nylon brush and other harsh cleansers may damage the exterior finish of the appliance.

#### ATTENTION:

1. This appliance is NOT intended for use with Dishwashers.
2. Always unplug from power supply before cleaning.
3. Blades are sharp. Handle carefully during maintenance.

## CLEANING AND MAINTENANCE



### EXTERIOR

Clean only with damp soft cloth. Never immerse the body into water or other liquids.

### RESIDUE TRAY, FILTER SET, PUSHER, UPPER COVER

Wash with clean or warm water only.



### FILTER BASE SET

*(Including filter and blade)*

Be careful when cleaning the blade, to avoid injury, use a tooth brush to clean the groove in the gap of the filter and blade.

### THE POWER CORD

Wipe any residuals adhered to the power cord with a dry soft cloth



- Thank you for choosing our product.
- Please study this manual carefully before use.
- If abnormalities are found during operation, please stop operation immediately. Send the unit to the authorized service centre for inspection and repair, if required.
- Save this manual future reference.