



Market Expansion  
Services by  
[www.dksh.com](http://www.dksh.com)

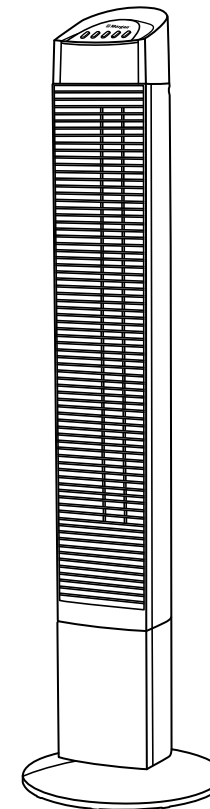


**DKSH**

E-mail: [electrical.appliance@dksh.com](mailto:electrical.appliance@dksh.com)  
[www.morgan.my](http://www.morgan.my)

[facebook.com/morganappliances](https://facebook.com/morganappliances)

## USER MANUAL



# Tower Fan

**MFT-AC46ED**

# C O N T E N T S

## 3 IMPORTANT SAFETY INSTRUCTIONS

## 4 INSTALLATION INSTRUCTIONS

## 4-6 OPERATING INSTRUCTIONS

## 7 CLEANING AND MAINTENANCE

## 7 SPECIFICATION

## IMPORTANT SAFETY INSTRUCTIONS

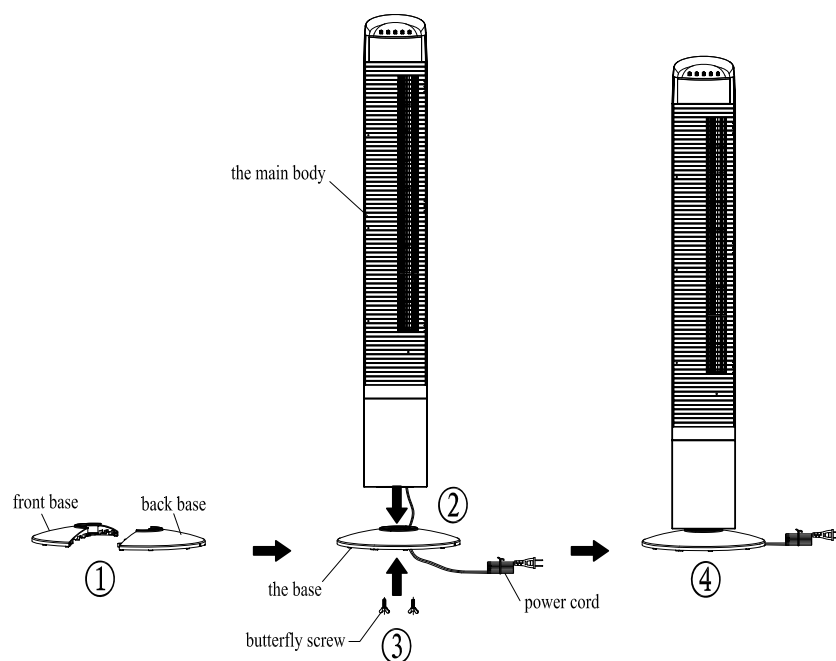
Please read these instructions carefully and keep for future reference.

1. Read all instruction carefully and keep this manual for future reference.
2. Do not let the appliance touch any hot surfaces.
3. To avoid electric shock, do not place the cord, the plug or the appliance in water or other liquids.
4. Close supervision is necessary when the appliance is used by or near the children.
5. Unplug the plug outlet when not in use and before cleaning.
6. Do not operate the appliance with a damaged cord or plug or after the appliance malfunctions or has been damaged in any manner. Return the appliance to our customer service centre for examination.
7. Do not let the cord hang over the edge of a table or counter or touch hot surfaces. Do not place the appliance on an unsteady or cloth covered surface.
8. Please check the power cord & the plug firstly to see if they are normal, and check the body to see if there is any cracks or damages. If there is any abnormal, please call the customer service hotline for assistance.
9. When you are going to move the fan or not in use, please cut off the power and unplug the plug.
10. Do not use the fan in the area at high humidity, temperature higher then 40°C or dusty area.
11. Do not insert the fingers or another objects into the fan during operation. Especially take care of the children.
12. Do not spray any detergent such as bug or mosquito killer into the fan to prevent it from damages to the plastic material.
13. The appliance is for household use only. Do not use at outdoors or for any commercial or industrial purpose.
14. This appliance is not intended for use by persons (including children) with reduced physical, sensory or mental capabilities, or lack of experience and knowledge, unless they have been given supervision or instruction concerning use of the appliance by a person responsible for their safety.
15. Children should be supervised to ensure that do not play with the appliance.
16. Always disconnect the mains power, before any user maintenance.
17. If the supply cord is damaged, it must be replaced by the sole distributor, its service agent or similarly qualified persons in order to avoid a hazard.
18. Please ensure that the fan is switched off from the supply mains before removing the guard.
19. Wet hand is not allowed and dangerous to pull out power cord plug from the electrical outlet.
20. Do not put any sundries into guard to avoid destroying the fan.
21. The unit should be used under the rated voltage and rated frequency indicated..

## OPERATING INSTRUCTIONS

### ASSEMBLY INSTRUCTION

1. Remove all packaging items from the tower fan.
2. Install the front support base and rear support base as a whole unit.
3. Follow the installation diagram: guide the power cord through the inner hole of the support base (2). Install the base to the bottom spindle of the product. **CAUTION: Ensure the spindle is aligned vertically and secured tightly into the inner hole of the support base.**
4. Insert the two pieces of butterfly screws into the corresponding screw holes (3) and rotate it securely into place. The base is now assembled to the main body successfully.
5. Align the power cord to the card slot of the support base. Assembly is now complete and your tower fan is ready to be used.

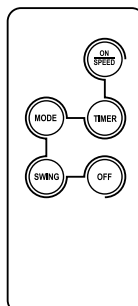


### FAN OPERATION

#### A. BATTERY INSTALLATION

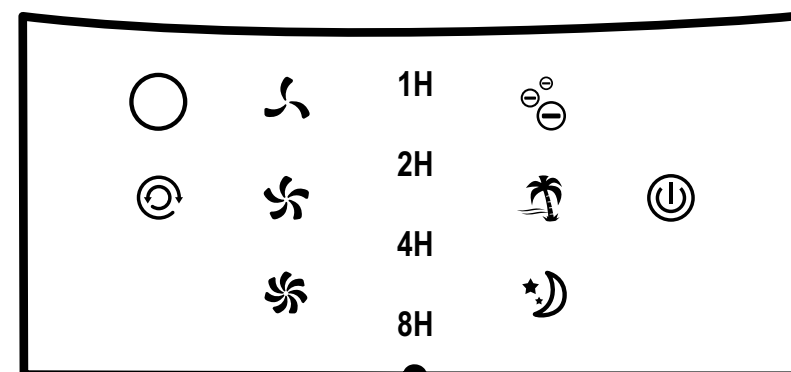
One button CR2032 3V battery has been used in our remote control. Please insert the battery to remote control tightly based on the direction of the polarity. If it does not use for a long time, please pull the battery out from the remote control.

#### B. REMOTE CONTROL PANEL

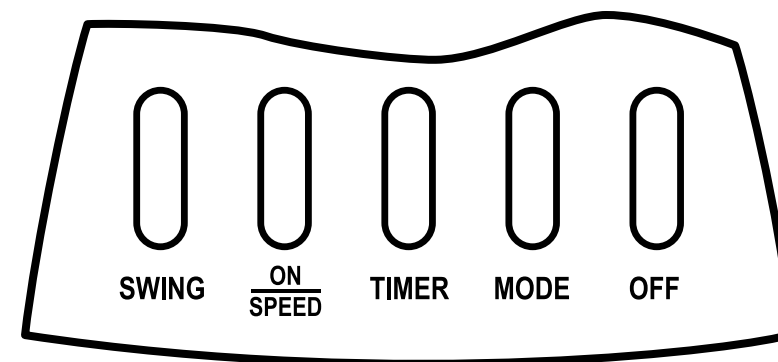


## OPERATING INSTRUCTIONS

### C. CONTROL DISPLAY PANEL



### D. BUTTON CONTROL PANEL



### ATTENTION:

Before switch to power, please read this manual carefully and make sure the voltage matches the unit's rating request before use it.

(Rated Electric Power: 220-240V~; 50Hz)

Connect Product to power (220-240V~), if the machine Issues a "Bi Bi" sound power, all functions and display do not work, the machine is in standby mode.

#### 1. ON/SPEED

At this time, press button ON  
SPEED to turn on the unit first. Then other buttons/functions can be available. During the operation, if the unit is working, press ON  
SPEED can adjust the speed. It will work as : Low→Mid→High→Low, repeating.

## OPERATING INSTRUCTIONS

## CLEANING AND MAINTENANCE

### 2. TIMER

Press the TIMER button and come into the timing setting.

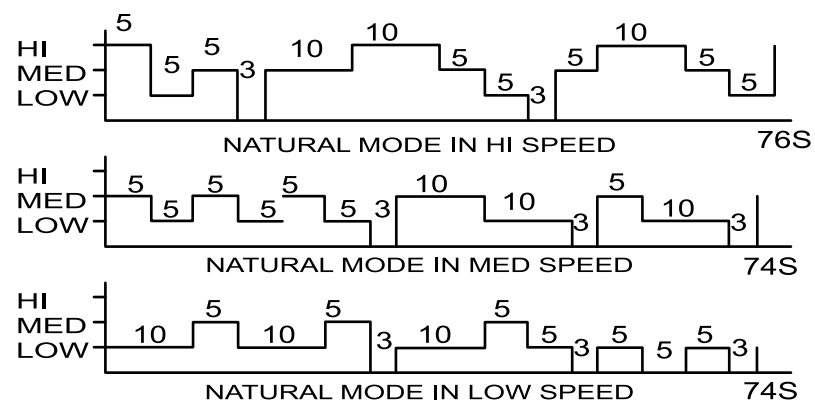
Initially no timer function is on and temp indicates is on. Press the TIMER button, the LED indicates "0". Press **TIMER** can set the time, 1h→2h→4h→8h, repeating and the timer will be indicated by LED. If the remaining time is "0", the unit will be in standby mode.

### 3. MODE

on the normal working status, press MODE it will be: normal→nature→sleeping→normal, repeating and the LED will show the mode type accordingly.

**NORMAL:** the unit will run as designed & constant speeded.

**NATURAL:** the motor will work as high-mid-low, and repeat automatically (as the diagram showing below).



**SLEEP:** Press the Mode button until the LED corresponding to the Sleep mode glows.

- Under this mode the fan speed switches ON and OFF at set speeds thus saving energy during the night. If to start the fan speed is set to High the fan will operate for half an hour in each fan speed setting. The cycle will continue until the preset time is reached or the unit is turned off.
- If the fan speed is set to Medium the unit will operate for 0.5hr in medium and then switch to Low setting and will operate for 0.5hr. After 0.5hr the unit will switch back to Medium and the cycle continues until the preset time is reached or the unit is turned off.
- If the fan is set to Low speed setting the fan will continue to operate in low setting until the preset time is reached or the unit is turned off.

### 4. SWING

Press "Swing" once: the fan will swing horizontally with the relative control light on. Press twice the fan will not swing.

Press it finally and the function of swing will relieve.

Notice: You can turn the head of the unit by hand if the angle of swinging doesn't meet your need.

### 5. OFF

Press "Off" to turn the device off and the fan will stop working.

**PS:** The operation of Remote Control is the same as the main body.

- Before you clean the fan, you must disconnect the main power and pull out the plug from the plug base.
- Rub the stand pole with clean cloth.
- Do not wash the fan with any solution. Do not immerse the appliance in water; otherwise a short circuit may damage the unit.
- If the fan do not use for a long time, please pack and store it.
- When the fan wheels do not roll or have any peculiar smell, please cut off the power source, and contact our Reparation Services Center.
- Please clean the back cover once a week by vacuum cleaner.

## SPECIFICATION

<b>RATED VOLTAGE / FREQUENCY</b>	<b>220-240V, 50HZ</b>
<b>RATED WATTAGE</b>	<b>65 W</b>
<b>NET WEIGHT</b>	<b>3.7KG</b>
<b>GROSS WEIGHT OF THE COLOR BOX</b>	<b>5.2KG</b>
<b>NOISE</b>	<b>≤55DB</b>
<b>PRODUCT SIZE (mm)</b>	<b>1109 × 290.2 × 290.2</b>
<b>SUITABLE ENVIRONMENT</b>	<b>0~+40°C, Relative Humidity 85%</b>