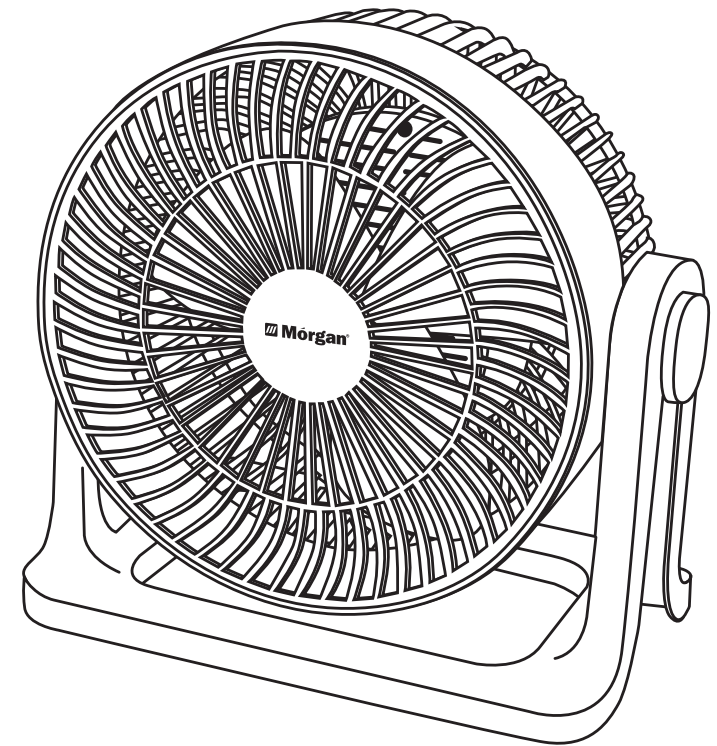


 **Mórgan®**

## USER MANUAL



## Circulation Fan

MFQ-SB35W (PK) BREEZER  
MFQ-SB35W (GR) BREEZER  
MFQ-SB35W (BL) BREEZER

 **Mórgan®**

Market Expansion  
Services by  
[www.dksh.com.my](http://www.dksh.com.my)



E-mail: [electrical.appliance@dksh.com](mailto:electrical.appliance@dksh.com)  
[www.morgan.my](http://www.morgan.my)

 [facebook.com/morganappliances](https://facebook.com/morganappliances)

## IMPORTANT SAFETY INSTRUCTIONS

1. Read all instruction carefully and keep this manual for future reference.
2. Do not allow the appliance to come into contact with any hot surfaces.
3. To avoid the risk of electric shocks, do not immerse the power cord, power plug or the appliance in water or any other liquids.
4. Close supervision is necessary when the appliance is used by or near young children.
5. Unplug the appliance from the power supply when not in use and before cleaning.
6. Do not operate the appliance with a damaged power cord or power plug or after the appliance malfunctions or has been damaged in any manner. Return the appliance to our customer service centre for examination.
7. Do not allow the power cord to hang over the edge of a table or counter or come into contact with hot surfaces. Do not place the appliance on unstable or cloth covered surfaces.
8. Always inspect the power cord & power plug and check for defects before using them. Examine the body for signs of cracks or other faults. Contact the nearest authorized dealer or a similarly qualified technician for assistance should you discover any anomalies.
9. Always unplug the appliance from the power supply before moving or not in use.
10. Do not operate the fan in a high humidity area where the temperature is higher than 40°C or in a dusty area.
11. Do not insert fingers or foreign objects into the fan during operation. This is especially important when operating the appliance near young children.
12. Do not direct the fan at children or the elderly for prolonged period of time to avoid serious health issues.
13. Do not directly spray detergent or water-based insect repellants into the fan during operation to avoid damaging the fan's plastic components.
14. This appliance is intended for household use only. Do not use it outdoors or for commercial or industrial purposes.
15. This appliance is not intended for use by persons (including children) with reduced physical, sensory or mental capabilities, or lack of experience and knowledge, unless they have been given supervision or instruction concerning the use of the appliance by a person responsible for their safety.
16. Children should be supervised to ensure that do not play with the appliance.
17. Always disconnect the appliance from the power supply before cleaning or for routine maintenance purposes.
18. If the power cord is damaged, it must be replaced by the sole distributor, its service agent or similarly qualified persons in order to avoid a hazard.
19. Always ensure that the fan is switched off from the power supply before removing the protective housing.
20. Do not operate the fan near flammable items and fumes.
21. Do not place the fan or any parts near an open flame, cooking or other heating appliances.
22. Do not hang or mount the fan on a wall or ceiling.
23. Do not use the fan if the housing is damaged in any manner.

## SPECIFICATIONS

<b>Model</b>	<b>MFQ-SB35W (PK) / (GR) / (BL) BREEZER</b>
<b>Rated Voltage / Frequency</b>	<b>220-240V~ 50/60Hz</b>
<b>Rated Wattage</b>	<b>35W</b>
<b>Ambient Operating Temperature</b>	<b>25°C</b>

## OPERATING INSTRUCTIONS

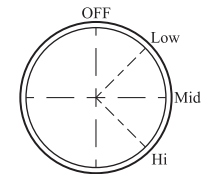
The unit is equipped with a 8-position speed control switch.

**OFF:** Turns off power

**Low:** Operates in low fan speed.

**Mid:** Operates in medium fan speed.

**Hi:** Operates in high fan speed.

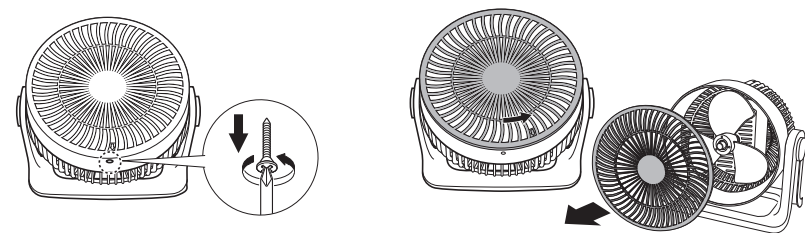


## CLEANING AND MAINTENANCE

**WARNING: ALWAYS UNPLUG THE UNIT FROM THE POWER SUPPLY BEFORE MOVING OR SERVICING. DO NOT IMMERSE THE POWER CORD, PLUG AND THE ENTIRE UNIT INTO WATER OR ANY OTHER LIQUIDS NOR RINSE IT UNDER A RUNNING TAP!**

**Caution: Do not use detergent, gasoline, benzene, thinner, or other solvents to clean the unit to avoid damaging the appliance.**

1. Remove the power plug from the power supply before disassembling the fan for cleaning.
2. Remove the screw under the cover and then twist the front cover to the left to detach it.



3. Twist the fan blade screw to the right and detach the fan blade.
4. Proceed to clean the fan blade.
5. Ensure all parts are thoroughly dry before reassembly.

