

 **Mórgan<sup>®</sup>**

 **Mórgan<sup>®</sup>**

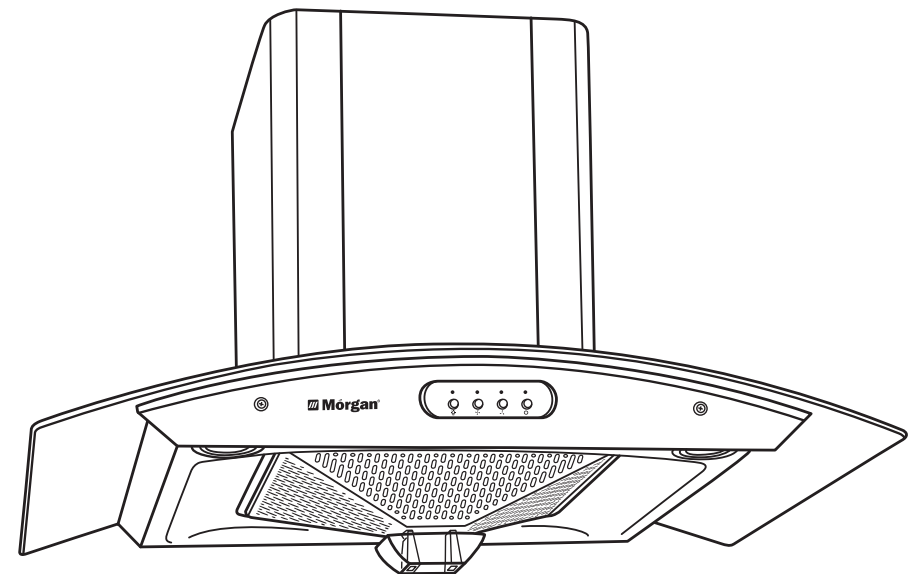
Market Expansion  
Services by  
[www.dksh.com.my](http://www.dksh.com.my)



E-mail: [electrical.appliance@dksh.com](mailto:electrical.appliance@dksh.com)  
[www.morgan.my](http://www.morgan.my)

 [facebook.com/morganappliances](https://facebook.com/morganappliances)

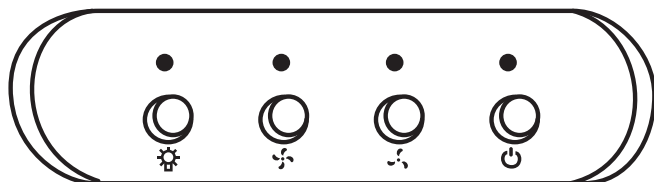
## USER MANUAL



# Designer Hood

**MDH-920OC**

## OPERATING INSTRUCTIONS



- Turn on the power and push the "⏻" button, the buzzer will buzz once and the indicator orange LED light will illuminate, indicating that the cooker hood is on stand by and ready for use. Push the "⏻" button again to stop.
- Push the "🌀" button and the indicator orange LED light will illuminate, the buzzer will buzz once, and the motor will run at low speed. Push the "🌀" button again to stop operation.
- Push the "🌀⚡" button and the indicator orange LED light will illuminate, the buzzer will buzz once, and the motor will operate at high speed. Push the "🌀⚡" button again to stop operation.
- Push the "💡" button and the indicator orange LED light will illuminate and with both LED lamps switched on. Push the button again to turn the LED lamps off.

**Note: with every push of the button the buzzer will buzz once.**

## MAINTENANCE & CLEANING

1. There is a fire risk if cleaning is not carried out in accordance with the instructions.
2. Be mindful of the flame when cooking food with alcoholic contents, which may cause burn the designer hood.
3. Ensure there is adequate ventilation when using both glass hob and designer hood.
4. Wipe the designer hood with a soft damp cloth.
5. Do not spray water directly on the designer hood to avoid electric shock or damage to it.
6. Use mild detergent to clean the impeller. Pull out the oil cup, and wash it.
7. Always wash or change the filter, and clean the designer hood regularly.
8. It is recommended to clean the designer hood once a week.
9. If the power cord is damaged, have it replaced by the manufacturer, its service agent or similarly qualified persons in order to avoid a hazard.
10. To degrease the filter, pull downwards to remove it and wash.
11. Do not allow young children, mentally or physically challenged persons from using, playing with or tampering with the designer hood. Older children and infirm persons should be supervised if they are using the designer hood.

## IMPORTANT NOTES

**This User Instruction Manual contains important information, including safety & installation points, which will enable you to get the most out of your appliance. Please keep it in a safe place so that it is easily available for future reference; for you or any person not familiar with the operation of the appliance.**

**NOTE:** Your safety is of the utmost importance to us. Please ensure that you read this instruction booklet before attempting to install or use the appliance. If you are unsure of any of the information contained in this booklet, please contact the Customer Care Department.

## SPECIFICATIONS

### DIMENSIONS

<b>WIDTH (CANOPY)</b>	<b>900mm</b>
<b>HEIGHT (WITH CHIMNEY)</b>	<b>600 – 755mm</b>
<b>DEPTH (CANOPY)</b>	<b>490mm</b>
<b>DIMENSIONS OF THE CHIMNEY SECTION</b>	<b>375mm x 297mm</b>

### SPECIFICATIONS

<b>MODEL</b>	<b>MDH-920OC</b>
<b>MATERIAL</b>	<b>201 Stainless Steel + Car Grade Tempered Glass</b>
<b>VOLTAGE / FREQUENCY</b>	<b>220-240V~ 50/60Hz</b>
<b>TRANSMISSION STYLE</b>	<b>Single Motor</b>
<b>LED LIGHTING POWER (LAMP)</b>	<b>2 x 1.5W</b>
<b>CONTROL</b>	<b>2 Speed Electronic Switch</b>
<b>FILTER</b>	<b>Double Layers Stainless Steel Filter + Charcoal Filter</b>
<b>MOTOR SPEED</b>	<b>1100rpm</b>
<b>MOTOR POWER</b>	<b>160W</b>
<b>EXTRACTION CAPACITY</b>	<b>800-1000m<sup>3</sup>/hr</b>

## INSTALLATION

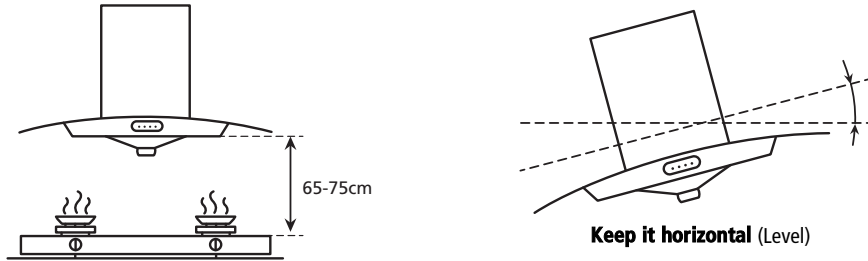
### IMPORTANT

- Before installation and usage read all instructions carefully and ensure that the voltage (V) and the frequency (Hz) indicated on the rating plate are exactly the same as the voltage and frequency in your home. Please refer to the rating plate that can be found behind the grease filter.
- All installation work must ONLY be carried out by a qualified electrician or similarly competent person.

### INSTALLING YOUR DESIGNER HOOD

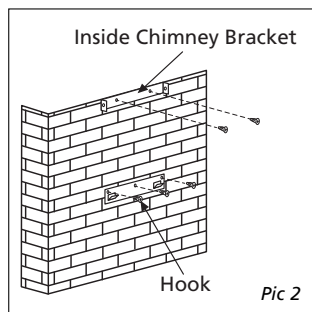
#### 1. Main Set Installation:

The minimum distance between the cooker and the appliance is 65-75cm. Drill holes on the wall and secure the screws to the main unit. Adjust the main unit until it is aligned horizontally.

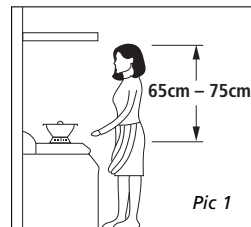


#### 2. Fitting The Chimney

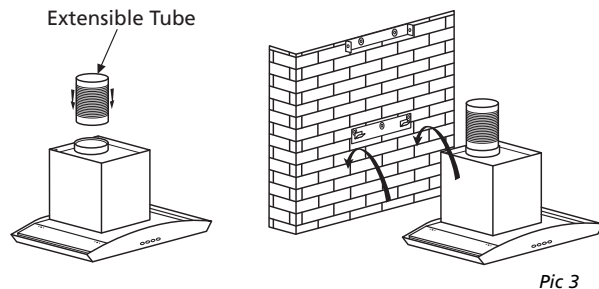
- a) The cooker hood should be placed at a distance of 65-75cm (26-30inch) from the cooking surface for the best effect. (See Pic 1).



- b) Install the hook on a suitable place once the installation height is ascertained, and keep it in line. The ascertained position of the inside chimney bracket will correspond to that of the chimney (See pic 2).



- c) Fix the extensible pipe according to the lead direction, and then attach the cooker hood onto the hook. (See pic 3).

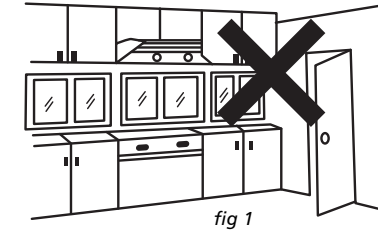


## CAUTION

### SURROUNDING ENVIRONMENT

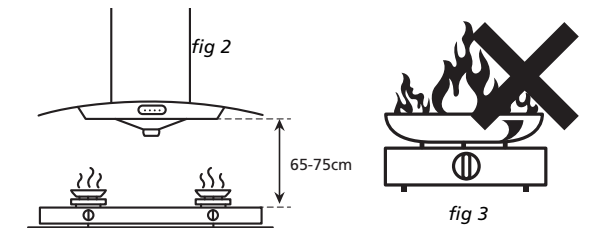
The designer hood must be installed in accordance with the installation instructions and all measurements followed. The designer hood should be installed near an outdoor window so that the exhaust fumes from the tube can exit easily through the window.

Alternatively, make a hole on the wall to allow the exhaust fumes exit from the aluminium tube. Do not force the aluminium tube into the hole. Similarly, do not select a place that has too many windows to prevent excess ventilation that may affect the designer hood performance. (fig 1)



### WARNING: UNPLUG THE POWER SOCKET BEFORE UNINSTALLATION.

1. Please keep a minimum 65 – 75cm distance between designer hood and cooker. Different types of cooker may require bigger space allowance. (fig 2)
2. Do not cook with an open flame under the designer hood. (fig 3)



3. Adjust the chimney height to ensure the exhaust fumes has exited completely.
4. Ensure adequate ventilation of the room when the designer hood is used at the same time as using cooking appliances that depend on gas or other fuels.
5. Accessible parts may become hot when used with cooking appliances.
6. The fumes must not be discharged into a flue that is used for exhausting fumes from other appliances burning gas or other fuels.
7. Securely tighten the screws after fixing the designer hood.
8. Do not tamper with or attempt to modify the appliance in any way to prevent accidents/hazards.
9. CAUTION: The edges of the designer hood are sharp – be mindful of this as you handle your appliance, especially during installation and cleaning.
10. Ensure the ducting for the extractor mode has the same diameter as the outlet hole throughout.

# C O N T E N T S

- 3** IMPORTANT NOTES
- 3** SPECIFICATIONS
- 4** INSTALLATION
- 5** CAUTION
- 6** OPERATING INSTRUCTIONS
- 6** CLEANING AND MAINTENANCE
- 7** TROUBLESHOOTING

## TRUBLE SHOOTING

<b>FAULT</b>	<b>CAUSE</b>	<b>SOLUTION</b>
Light & motor does not function	Lights are damaged	Replace lights
	Power cord is loose	Connect the wires
Heavy vibration from The body during operation	The leaf is damaged and causes vibration	Replace the leaf
	The motor is not tightly secured	Secure the motor tightly
	The body is not tightly secured	Secure the body tightly
Power light & motor does not work	Power cord is loose	Connect the wires
	The capacitor may be damaged	Replace capacitor
	The motor is jammed or bearing is damaged	Replace motor
	The fuse on the PCB has damaged	Replace fuse