

 **Mórgan®**

 **Mórgan®**

Market Expansion  
Services by  
[www.dksh.com](http://www.dksh.com)

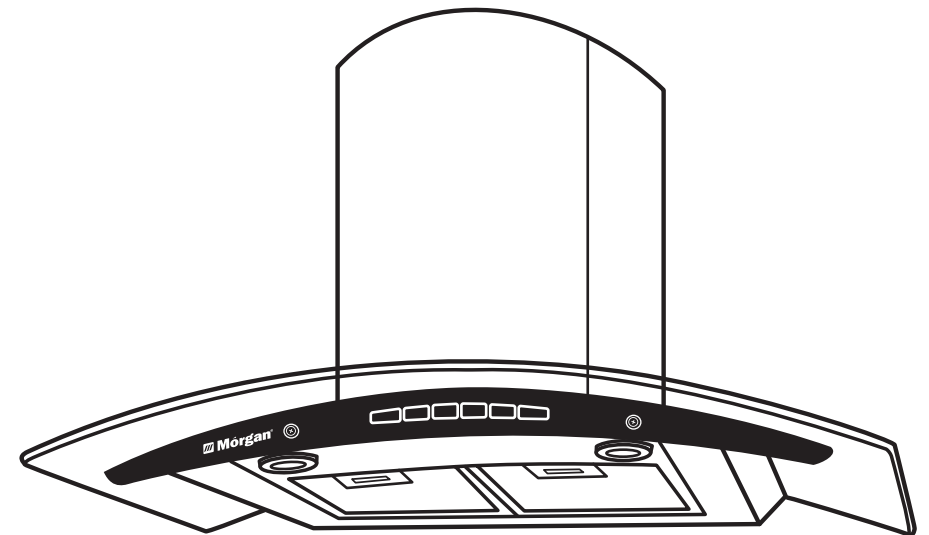


**DKSH**

E-mail: [electrical.appliance@dksh.com](mailto:electrical.appliance@dksh.com)  
[www.morgan.my](http://www.morgan.my)

 [facebook.com/morganappliances](https://facebook.com/morganappliances)

## USER MANUAL



# Designer Hood

**MDH-912ST**

## OPERATING INSTRUCTIONS

### NOTE

- Light settings are independent from other settings (including delay-off) and lights have to be manually turned on or off.
- The designer hood will save user configurations, setting such as fan speed and they will remain the same until next use.

**IMPORTANT: IDEALLY YOU SHOULD TURN ON YOUR HOOD TEN MINUTES BEFORE YOU START TO COOK, OR AT THE VERY LEAST WHEN YOU BEGIN COOKING. YOU SHOULD ALSO RUN YOUR HOOD FOR TEN MINUTES AFTER YOU HAVE FINISHED COOKING.**

## MAINTENANCE & CLEANING

- There is a fire risk if cleaning is not carried out in accordance with the instructions.
- Be mindful of the flame when cooking food with alcoholic contents, which may cause burn the designer hood.
- Ensure there is adequate ventilation when using both glass hob and designer hood.
- Wipe the designer hood with a soft damp cloth.
- Do not spray water directly on the designer hood to avoid electric shock or damage to it.
- Use mild detergent to clean the impeller. Pull out the oil cup, and wash it.
- Always wash or change the filter, and clean the designer hood regularly.
- It is recommended to clean the designer hood once a week.
- If the power cord is damaged, have it replaced by the manufacturer, its service agent or similarly qualified persons in order to avoid a hazard.
- To degrease the filter, pull downwards to remove it and wash.
- Do not allow young children, mentally or physically challenged persons from using, playing with or tampering with the designer hood. Older children and infirm persons should be supervised if they are using the designer hood.

## IMPORTANT NOTES

**This User Instruction Manual contains important information, including safety & installation points, which will enable you to get the most out of your appliance. Please keep it in a safe place so that it is easily available for future reference; for you or any person not familiar with the operation of the appliance.**

**NOTE:** Your safety is of the utmost importance to us. Please ensure that you read this instruction booklet before attempting to install or use the appliance. If you are unsure of any of the information contained in this booklet, please contact the Customer Care Department.

## SPECIFICATIONS

### DIMENSIONS

<b>WIDTH (CANOPY)</b>	<b>900mm</b>
<b>HEIGHT (WITH CHIMNEY)</b>	<b>450 – 850mm</b>
<b>DEPTH (CANOPY)</b>	<b>500mm</b>
<b>DIMENSIONS OF THE CHIMNEY SECTION</b>	<b>365mm x 310mm</b>

### SPECIFICATIONS

<b>MODEL</b>	<b>MDH-912ST</b>
<b>MATERIAL</b>	<b>201 Stainless Steel + Curved Tempered Glass Wing</b>
<b>VOLTAGE / FREQUENCY</b>	<b>240V~ 50Hz</b>
<b>AMP</b>	<b>1.5A</b>
<b>ILLUMINATION (LAMP)</b>	<b>2 x ≤ 20W</b>
<b>CONTROL</b>	<b>3 Speed Finger Touch Switch</b>
<b>FILTER</b>	<b>2 x Washable 5 Layers Aluminum Grease Filter + Charcoal Filter</b>
<b>MOTOR SPEED</b>	<b>1000rpm</b>
<b>CONSUMPTION POWER</b>	<b>270W</b>
<b>EXTRACTION CAPACITY</b>	<b>1000m<sup>3</sup>/hr</b>
<b>AUTO SHUT OFF TIMER</b>	

## INSTALLATION

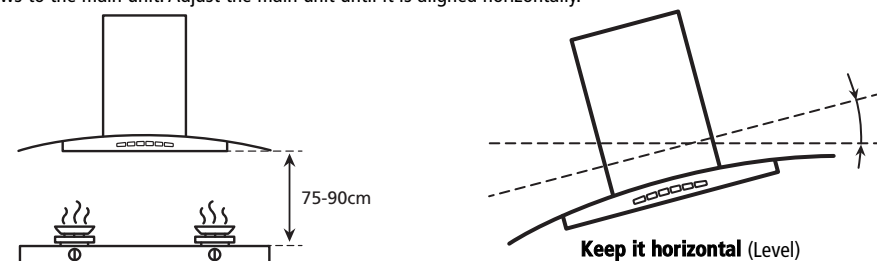
### IMPORTANT

- Before installation and usage read all instructions carefully and ensure that the voltage (V) and the frequency (Hz) indicated on the rating plate are exactly the same as the voltage and frequency in your home. Please refer to the rating plate that can be found behind the grease filter.
- All installation work must ONLY be carried out by a qualified electrician or similarly competent person.

### INSTALLING YOUR DESIGNER HOOD

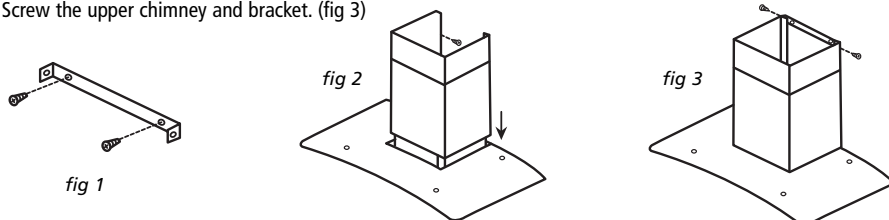
#### 1. Main Set Installation:

The minimum distance between the cooker and the appliance is 75-90cm. Drill holes on the wall and secure the screws to the main unit. Adjust the main unit until it is aligned horizontally.



#### 2. Fitting the chimney

- Install the chimney bracket according to your kitchen cabinet design. Find a suitable location and install it on the wall. (fig 1)
- Adjust chimney height according to your kitchen cabinet design. Insert the aluminium tube into the indentation. (fig 2)
- Screw the upper chimney and bracket. (fig 3)

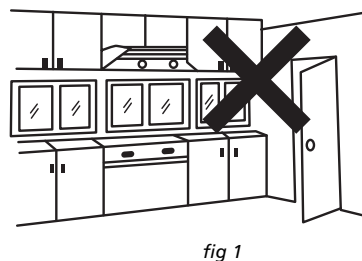


## CAUTION

### SURROUNDING ENVIRONMENT

The designer hood must be installed in accordance with the installation instructions and all measurements followed. The designer hood should be installed near an outdoor window so that the exhaust fumes from the tube can exit easily through the window.

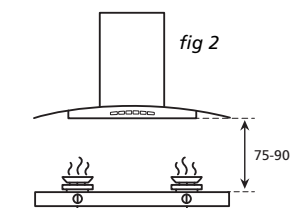
Alternatively, make a hole in the wall to allow the exhaust fumes exit from the aluminium tube. Do not force the aluminium tube into the hole. Similarly, do not select a place that has too many windows to prevent excess ventilation that may affect the designer hood performance. (fig 1)



## CAUTION

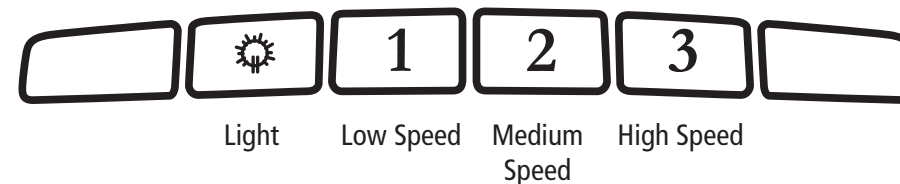
### WARNING: UNPLUG THE POWER SOCKET BEFORE UNINSTALLATION.

1. Please keep a minimum 75 – 90cm distance between designer hood and cooker. Different types of cooker may require bigger space allowance. (fig 2)
2. Do not cook with an open flame under the designer hood. (fig 3)



3. Adjust the chimney height to ensure the exhaust fumes has exited completely.
4. Ensure adequate ventilation of the room when the designer hood is used at the same time as using cooking appliances that depend on gas or other fuels.
5. Accessible parts may become hot when used with cooking appliances.
6. The fumes must not be discharged into a flue that is used for exhausting fumes from other appliances burning gas or other fuels.
7. Securely tighten the screws after fixing the designer hood.
8. Do not tamper with or attempt to modify the appliance in any way to prevent accidents/hazards.
9. CAUTION: The edges of the designer hood are sharp – be mindful of this as you handle your appliance, especially during installation and cleaning.
10. Ensure the ducting for the extractor mode has the same diameter as the outlet hole throughout.

## OPERATING INSTRUCTIONS



### FAN SPEED SETTING

- The designer hood is operates at 3 fan speed settings. Touch the high speed button to turn on high speed ventilation, medium speed button to turn on low speed ventilation, and low speed button to turn on low speed ventilation. The previously used fan speed will be automatically memorized and the designer hood will adjust itself to the previously used fan speed in the next operation.

### LIGHT

- The user can turn on the designer hood illumination by touching the 'Light' button. Touch once to turn it on and once more to turn it off. The light function is independent from other function which will not be affected by other functions or adjustment.

# C O N T E N T S

- 3** IMPORTANT NOTES
- 3** SPECIFICATIONS
- 4** INSTALLATION
- 4-5** CAUTION
- 5-6** OPERATING INSTRUCTIONS
- 6** CLEANING AND MAINTENANCE
- 7** TROUBLESHOOTING

## TRUBLE SHOOTING

**IMPORTANT:** Refer to the checklist below if your designer hood appears to have malfunctioned before contacting the Customer Care Department.

**1. Designer hood will not start.**

- Check that the hood is connected to the electricity supply
- Check that the fan speed control is set correctly.

**2. Designer hood is not working effectively.**

- The fan speed is not set high enough
- The grease filter is dirty and requires cleaning.
- The kitchen is adequately ventilated.
- If the hood is set up for recirculation mode, check that the carbon filters do not need replacing.
- If the hood is set up for extraction mode, check that the ducting hose and discharge outlet are not blocked.

**3. Designer hood switches off during operation.**

- The safety cut-out device has tripped.
- Turn off the hob and then wait for the safety cut-out device to reset.

**IMPORTANT**

- If you have installed your designer hood too low, the safety cut-out device will frequently trip. Your designer hood may become damaged if the safety cut-out device is tripped frequently.
- If your appliance appears not to be operating correctly, then you should disconnect it from your mains supply and then contact the Customer Care Department.

**DO NOT ATTEMPT TO REPAIR THE APPLIANCE YOURSELF.**