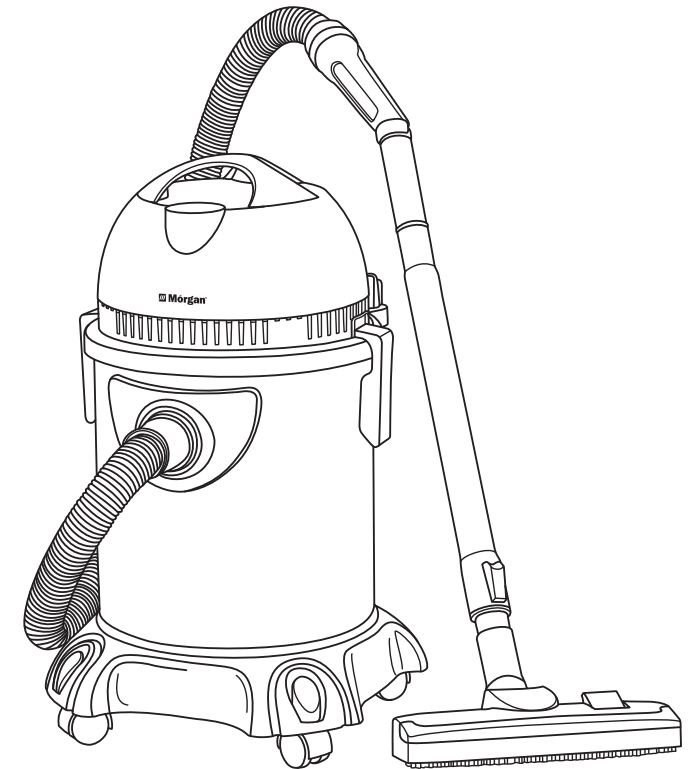


 **Mórgan®**

USER MANUAL



3-in-1 Vacuum Cleaner

MVC-TC181SS

 **Mórgan®**

Market Expansion
Services by
www.dksh.com.my



DKSH

E-mail: electrical.appliance@dksh.com
www.morgan.my

 facebook.com/morganappliances

C O N T E N T S

- 3 Parts Identification
- 3 Specifications
- 4 Important Safeguard
- 4 Operating Instructions
- 7 Troubleshooting

PARTS IDENTIFICATION

- A. Motor Head
- B. Switch
- C. Float *(prevents water from entering motor when is full tank)*

- D. Polyester filter *(removable for liquid suction)*

- E. Hand Lock
- F. Suction Inlet

- G. Tank

- H. Flexible Hose

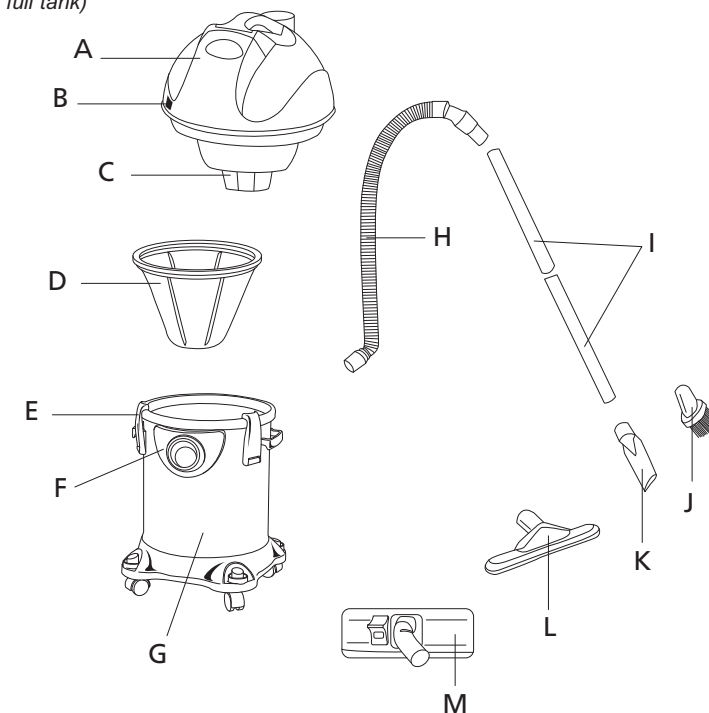
- I. Extension Wands

- J. Ellipse Brush

- K. Crevice Nozzle

- L. Squeegee Nozzle *(for wet suction)*

- M. Master Nozzle *(for dry suction)*



SPECIFICATIONS

RATED VOLTAGE / FREQUENCY	220-240V~ 50/60Hz
RATED WATTAGE	1800 W
CAPACITY	32 L

IMPORTANT SAFEGUARD

1. This appliance is strictly for indoor use only and not for commercial or industrial use.
2. Before using the appliance, ensure that the voltage indicated on the appliance corresponds to the local rated voltage before connecting the appliance to the power supply.
3. If the power cord is damaged, switch off immediately and have it replaced by the manufacturer or authorized service technician.
4. Never suck up asbestos or asbestos dust or anything that is burning or smouldering.
5. Never suck up flammable substances and do not suck up ashes they are cold. Do not use the appliance in rooms with explosive vapours (petrol, thinners, Solvents).
6. Never suck up inflammable or corrosive liquids such as petrol or other volatile substances.
7. Avoid sucking up sharp object or objects can obstruct the hose.
8. Always use the appliance horizontally position. Never operate it on a slanted surface or hang it upside down, otherwise the water may enter the motor to damage it.
9. Do not pull, lift or carry by the power cord. Do not use the cord as handle. Avoid closing the motor head on the cord or yank the cord around or against sharp edges or corners.
10. Do not use the appliance without the filter in place.
11. Never leave refuse in the dust box for long period of time.
12. Do not handle the power plug, switch or the appliance with wet hands.
13. Always remove the power plug from the power socket in the event of any malfunction, and after use or before cleaning.
14. Do not positions the appliance or power cord on or near hot surfaces or near open flames.
15. Keep the appliance out of children's reach. This appliance should only be used by adults.

OPERATING INSTRUCTIONS

ATTENTION

TO ENSURE THE EFFICIENT PERFORMANCE OF THE MACHINE, CLEAN THE POLYESTER AND DRUM AFTER EVERY USE

THE VACUUM CLEANER DESIGN IS DESIGN FOR:

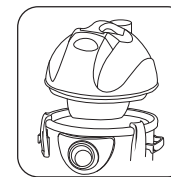
1. Dry vacuum suction of dust.
2. Wet vacuum suction of water based liquids.
3. Blow vacuuming can be useful for dusting out the garage or workshop.

OPERATING INSTRUCTIONS

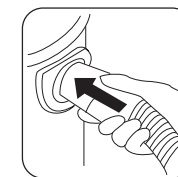
DRY VACUUMING



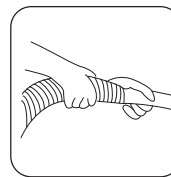
1. Insert the cloth filter bag in the tank.



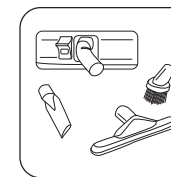
2. Assemble the motor head on the tank and lock it manually.



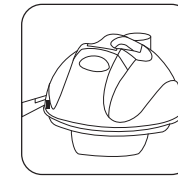
3. Connect the flexible hose to the Suction Inlet.



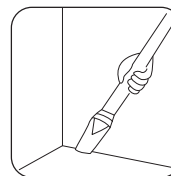
4. Connect the wand and the extensions to other side of the Flexible Hose.



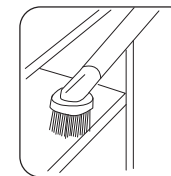
5. Select & connect the most suitable accessory.



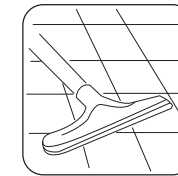
6. Connect the power plug to the power outlet and switch on the power.



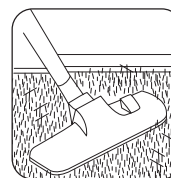
7. Uses of the Crevice Tool.



8. Uses of the Ellipse Brush.



9. Uses of the Squeegee Nozzle for floor cleaning.



10. Uses of the Master Nozzle for carpet tool.

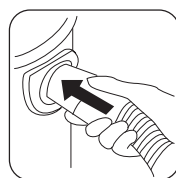
WET VACUUMING



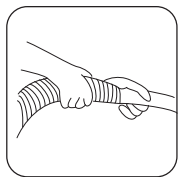
1. Remove the cloth filter bag.



2. Assemble the Motor Head on the tank and lock it manually.



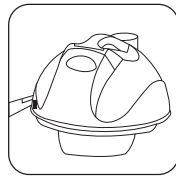
3. Connect the flexible hose to the Suction Inlet.



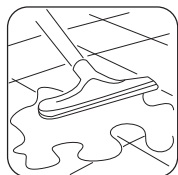
4. Connect the wand and the extensions to other side of the Flexible Hose.



5. Connect the Squeegee Nozzle.



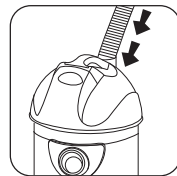
6. Connect the power plug to the power outlet and switch on the power.



7. Uses of the Squeegee Nozzle.

BLOWING VACUUM

- Empty and clean the tank.
- Fill the hose directly into the exhaust opening.



If a problem occurs always switch off the unit immediately

1. MOTOR DOES NOT OPERATE

- Ensure unit is plugged in correctly to the power outlet and switched on.

2. SUCTION POWER IS REDUCED OR MOTOR OPERATE BUT SUCTION POWER IS WEAK

- The maximum level of dust or water collection has reached the limit. Press the ON/OFF button, disconnect the power cord from the power outlet and empty tank.
- Check and clear any blockages within the system or accessory.
- Ensure the filter is clean and not damaged in any way.

3. HEAT FROM APPLIANCE

- Heat generated from appliance is normal.