



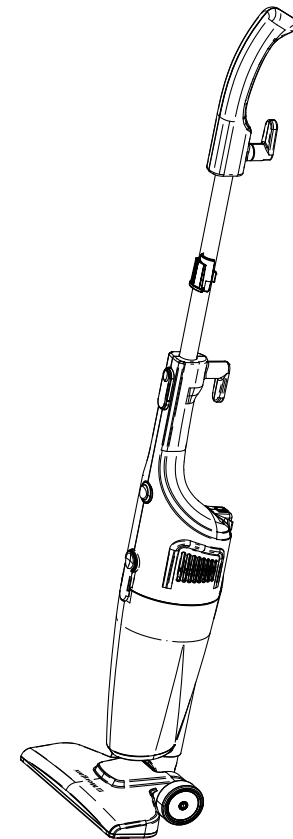
Market Expansion
Services by
www.dksh.com.my



E-mail: electrical.appliance@dksh.com
www.morgan.my

facebook.com/morganappliances

USER MANUAL



Vacuum Cleaner

MVC-CYCLONE 60

C O N T E N T S

3 Important Safeguards

4 Parts Identification

4 Specifications

5 Operating Instructions

6 Care & Cleaning

7 Troubleshooting

IMPORTANT SAFEGUARDS

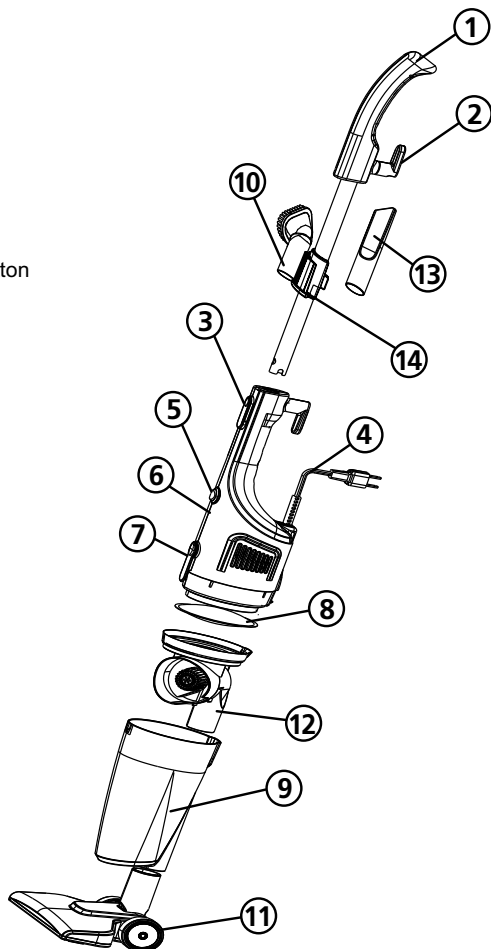
READ ALL INSTRUCTIONS BEFORE USING THE APPLIANCE.

When using electrical appliances, basic precautions should always be followed, including the following:

1. Please read this instruction manual carefully before first use. It is advisable to keep this instruction manual for future reference
2. This appliance can be used by children aged from 8 years and above and persons with reduced physical, sensory or mental capabilities or lack of experience and knowledge if they have been given supervision or instruction concerning use of the appliance in a safe way and understand the hazards involved.
3. Do not allow children to play with the appliance, clean or carry out maintenance works without supervision.
4. DO NOT vacuum water, wet objects, liquids, ashes, hot coals, cigarette butts, matches or any hot, smoking or burning objects, etc.
5. DO NOT vacuum flammable or combustible materials (i.e. lighter fluid, petrol, kerosene, etc.) or use in the presence of explosive liquids or vapour.
6. DO NOT vacuum large objects, hard or sharp objects such as glass, nails, screws, coins, etc. that are likely to cause damage to the appliance.
7. DO NOT use the vacuum without installing all the filters.
8. DO NOT store or use the appliance near high temperature areas.
9. DO NOT run over the power cord with the vacuum cleaner.
10. DO NOT use the vacuum cleaner if it is obstructed. Turn the appliance off and remove all obstructions before continuing.
11. Never pull the appliance by the power cord. Instead, grasp the power plug and pull to disconnect.
12. Never leave the appliance unattended when connected to the power supply and/or switched on.
13. Never operate the appliance with a damaged power cord or power plug. If the power cord is damaged, it must be replaced by the manufacturer, its service agent or similarly qualified persons in order to avoid a hazard.
14. Do not attempt to modify this product in any way.
15. Empty the Dust box and clean the filters regularly to ensure optimal operation of the appliance.
16. Always turn off function controls before you connect or disconnect the appliance to or from the power supply.
17. IMPORTANT: Always disconnect the appliance from the power supply when not in use, before cleaning the filters or connecting/disconnecting the accessories.
18. Ensure that the voltage stated on the appliance's rating label matches the appliance's power supply voltage.
19. Never immerse the appliance in water or other liquids.
20. Never operate the appliance with a damaged power cord/plug or after a malfunction or if it has been dropped or damaged in any manner.
21. This appliance is for domestic use only.

PARTS IDENTIFICATION

1. Hand grip
2. Power cord hook
3. Separation button
4. Power cord
5. Power switch
6. Main body
7. Dust box release button
8. Filter
9. Dust box
10. Suction brush
11. Floor brush
12. Cyclone separator
13. Nozzle
14. Brush clip



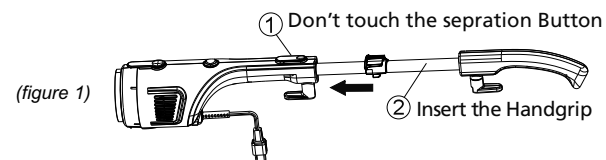
SPECIFICATIONS

MODEL	MVC-CYCLONE 60
RATED VOLTAGE / FREQUENCY	220-240V~ 50/60Hz
RATED POWER	600W
MAX. SUCTION	16Kpa
DUST BOX CAPACITY	1.2L

OPERATING INSTRUCTIONS

OPERATING AS AN UPRIGHT VACUUM CLEANER

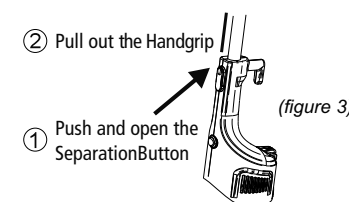
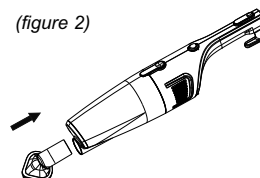
1. Ensure there is a filter inside the dust box.
2. Ensure all parts are correctly connected and power is turned off before operating this appliance.
3. Installing the hand grip into the main body (*refer to Fig. 1*):
 - Apply a little force to ensure it locks into the interlocking tube.
 - **WARNING:** Don't overexert force when installing into the main body to prevent damaging the lock.



4. Connect power plug into power supply.
5. Turn on power supply.
 - NOTE:** Do not entwine the power cord over your feet or other heavy objects.
6. Move the floor nozzle up and down to clean the floor.
 - IMPORTANT:** Keep appliance on a level surface.
7. Avoid pressing the floor nozzle on the floor or move it breadthwise to prevent damaging the floor.
8. Always detach the power cord from the power supply after every use.

OPERATING AS A COMPACT VACUUM CLEANER

1. Detach the hand grip and floor nozzle.
2. Attach the suction brush (*refer to Fig. 2*).
3. Ensure there is a filter inside the dust box.
4. Ensure all parts are correctly connected and power is turned off before operating this appliance.

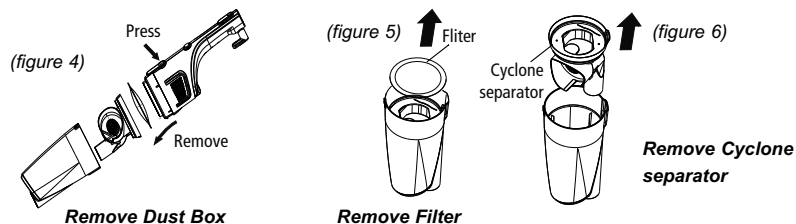


5. To detach the hand grip, push and open the separation button and detach the hand grip (*see Fig. 3*).
6. Connect power plug into power supply.
7. Turn on power supply.
8. Move suction brush along surface to be cleaned such as table, corners and clothing.
9. Always detach the power cord from the power supply after every use.

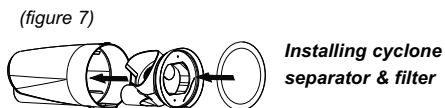
CARE & CLEANING

It is recommended to clean the vacuum cleaner regularly to ensure optimal performance and lengthen its lifespan.

1. Detach the power plug from the power supply before cleaning and/or storing.
2. Do not use caustic or abrasive products to clean the housing or you may damage the surface.
3. Never immerse the appliance in water or any other liquids.
4. Press the dust box button to release and detach the dust box (see Fig. 4 & Fig. 5)



5. Detach the cyclone separator from the dust box (see Fig. 6).
6. Hold the dust box over a dustbin and empty it.
7. The dust box and nozzles can be washed in water. Allow to dry before reassembling.
NOTE: Do not use alcohol, gasoline or other abrasive cleansers to wash.
8. Use a clean damp cloth to clean the hand grip and main body.
9. Do not wash the filter in a washing machine. Clean it free of dust, wash in water and allow to dry before assembling.
10. Assemble the filter and cyclone separator back into the dust box. (see Fig. 7)



TROUBLESHOOTING

WARNING: Do not perform repairs yourself for your own safety if your appliance does not function, is damaged or require spare part(s). The following table contains tips on how to deal with minor problems yourself:

PROBLEM	POSSIBLE CAUSES	SOLUTIONS
Motor not operating	<ul style="list-style-type: none"> • Ensure power plug connected to the power supply. • Ensure there is power supply. • Check if the power switch is turned on. 	<ul style="list-style-type: none"> • Insert the power plug into the power supply again securely. • Ensure there is proper power supply. • Ensure that the power switch is turned on.
Suction power has reduced considerably	<ul style="list-style-type: none"> • Check whether air inlet is blocked by dirt and grime. • Check whether the dust box is full. • Check if the filter is blocked. 	<ul style="list-style-type: none"> • Remove dirt and grime. • Empty the dust box. • Clean the filter.