

Mórgan®

USER MANUAL



Mórgan®

Market Expansion
Services by
www.dksh.com.my



E-mail: electrical.appliance@dksh.com
www.morgan.my

 [facebook.com/morganappliances](https://www.facebook.com/morganappliances)

Blender

MBL-401WG

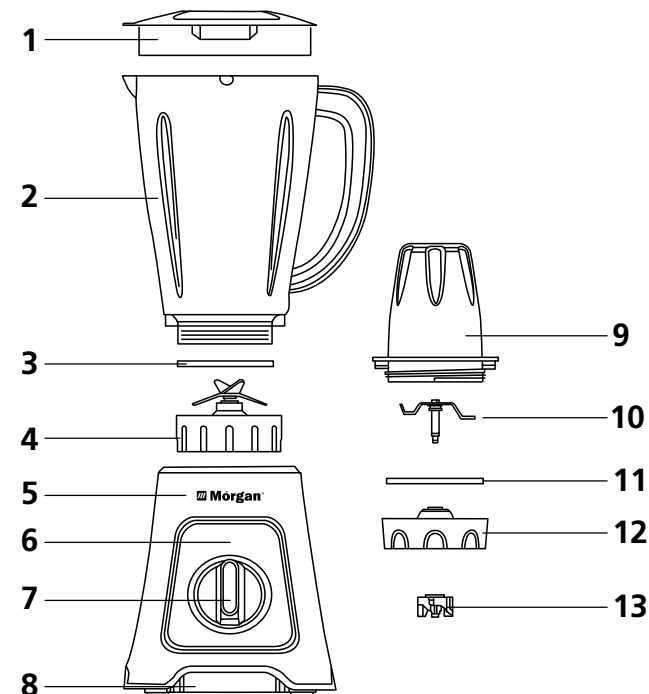
C O N T E N T S

- 3** PARTS IDENTIFICATION
- 3** SPECIFICATIONS
- 4** IMPORTANT SAFEGUARDS
- 5** BEFORE FIRST USE
- 5** OPERATING INSTRUCTIONS
- 7** CLEANING & MAINTENANCE

Thank you for purchasing a quality MORGAN appliance. We trust that you will have a pleasant experience with your new product. To guarantee safety and best efficiency, please read this manual carefully and keep a copy for future reference.

IMPORTANT SAFEGUARDS

1. Jar Cover
2. Jar
3. Jar Base Seal Ring
4. Jar Base
5. Body
6. Control Panel
7. Switch Button
8. Base
9. Grinder Jar
10. Blade
11. Jar Base Seal Ring
12. Grinder Jar Base
13. Upper Connector



SPECIFICATIONS

Model	MBL-401WG
Rated Voltage / Frequency	220-240V~ 50/60Hz
Rated Wattage	400W
Capacity	1.5L

IMPORTANT SAFEGUARDS

When using electric appliances, basic safety precautions should always be followed including the following:

1. Read all instructions carefully and retain them for future reference.
2. Before connecting to the power supply, ensure that the voltage of the appliance corresponds to the voltage indicated on the power supply rating label at the bottom of the appliance.
3. Always disconnect appliance from the power supply when not in use or before cleaning.
4. Always attach the power cord to the appliance BEFORE connecting it to the power supply. To disconnect, switch off appliance first before detaching the power plug from the power supply.
5. Close supervision is necessary when any appliance is used by or near children.
6. To protect against electric shock, do not immerse power cord, power plug, or any electrical parts of the blender in water or other liquids.
7. Do not allow power cord to hang over edge of table or counter or touch hot surfaces.
8. Do not operate appliance with damaged power cord or power plug or after the appliance malfunctions or has been damaged in any manner. In such a situation, it is recommended to return the appliance to your nearest Authorized Service Centre for examination, repair, or adjustment.
9. The use of accessory attachments not recommended by the appliance manufacturer may cause hazard or injury.
10. Always operate appliance on a flat, stable and sturdy surface.
11. Do not leave the appliance operating unattended.
12. When removing the blender from the motor unit, wait until the blades have completely stopped.
13. Always operate blender with cover in place.
14. Keep hands and utensils out of jar while blending to reduce the risk of severe injury to persons or damage to the blender. A scraper may be used but only when the blender is not in operation.
15. Do not place on or near a hot gas, electric burner, or heated oven.
16. This appliance is for HOUSEHOLD USE ONLY. Do not use outdoors.
17. Disconnect the appliance from the power supply when not in use, before assembling on disassembling parts, and before cleaning or maintenance. To disconnect, turn the control to "0", then grasp and detach the power plug from the power supply. Do not pull on the power cord.
18. To reduce the risk of injury, never attach blade assembly on motor unit without the jar attached.
19. Do not use appliance for other than its intended use.
20. This appliance is intended to be used in household and similar applications such as:
 - staff kitchen areas in shops, offices and other working environments; farmhouses;
 - by clients in hotels, motels and other residential type environments;
 - bed and breakfast type environments.
21. Avoid any contact with blades or moveable parts.
22. Switch off the appliance and disconnect from the power supply before changing accessories or approaching movable parts that move during use.
23. Exercise caution when handling sharp cutting blades, emptying the bowl and during cleaning.
24. Be careful if hot liquid is poured into the appliance as it can be ejected from the appliance due to sudden steaming.
25. This appliance is not intended for use by persons (including children) with reduced physical, sensory or mental capabilities or lack of experience and knowledge, unless they have been given supervision or instruction concerning use of the appliance by a person responsible for their safety.
26. Children should be supervised to ensure that they do not play with the appliance.

BEFORE FIRST USE

1. Inspect and ensure all parts are complete and not damaged in any manner.
2. Choose the appropriate attachment to perform your desired task.
3. The blender attachment is suitable for blending fruits or vegetables, while the grinder attachment for grinding coffee beans.
4. Clean the attachment according to the section "CLEANING AND MAINTENANCE".
5. **WARNING: SHARP BLADES!** Handle with great care and be sure to detach appliance from power supply before assembling and removing parts.

OPERATING INSTRUCTIONS

BLENDER OPERATION

1. Lay the motor unit on a flat and stable horizontal surface and ensure it is detached from the power supply.
NOTE: A safety interlocking device at the bottom of the jar will prevent the jar from operating if it is not assembled correctly in place.
2. Open the jar cover by turning anti-clockwise and place it on the surface.
3. Peel or core the fruits or vegetables and then cut it into small pieces before putting them into the jar. Add a small amount of purified water to facilitate the smooth running of the appliance.
4. The amount of mixture should not exceed the max level as indicated on the jar, nor sit lower the min level. The best proportion of the fruits or vegetables and water is 2:3.
NOTE: The blender is not suitable for beating egg white, mashing potatoes, mixing dough, extracting juice from fruit and vegetable.
5. Replace jar cover on the jar and turn it clockwise.
NOTE: A safety interlocking device at the side of jar cover will prevent the appliance from operating if the jar cover is not assembled properly in place.
6. You may add ingredients into the jar through its centre opening during operation.
7. Make sure the jar cover is placed in position completely before operating, and never open the jar cover during operation.
8. Do not operate the appliance for more than 2 minutes per cycle. Allow appliance to cool down to room temperature before performing the next operation cycle.
9. Turn the Speed Selector to position "0" once the mixture has been blended to your desired consistency.
10. To serve, turn the jar anti-clockwise and carefully detach it from the motor unit, open the jar cover and then pour contents.

GRINDER OPERATION

1. Place the motor unit on a flat and stable horizontal surface and make sure it is not plugged into the power supply.
2. Fill the grinding bowl with coffee beans & assemble the grinding blade assembly and grinding bowl together. *(please refer to Fig.1)*

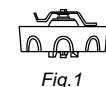
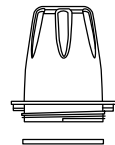


Fig.1

NOTE: The max. allowable quantity of coffee beans for the grinding bowl is 50g.

3. Place the grinder attachment on the motor unit *(please refer to Fig. 2)*

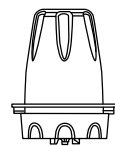


Fig.2

NOTE: A safety interlocking device at the bottom of grinder will prevent the grinder from operating if it is not assembled properly in place.

4. Ensure the Speed Selector is set to "0" Position before connecting it into the power supply.
5. Select the desired speed setting & the appliance will begin grinding.
6. During grinding, you may press down the Pulse without releasing it if want to accelerate the grinding process.
7. Turn the Speed Selector to "0" Position once the coffee has been ground to your desired result.
8. Disconnect from the power supply once grinding ends. Disassemble the grinder attachment from the unit, keep the grinding bowl downward and turn it anti-clockwise *(please refer to Fig.3)*, then empty the bowl and serve.

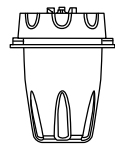


Fig.3

CAUTION: Do not operate the appliance for more than 30 seconds per cycle. Wait for it to cool down to room temperature before performing the next operation cycle.

WARNING

1. Never operate the appliance continuously for more than 2 minutes per cycle.
2. Blades are very sharp! Handle with care.
3. Do not operate without the jar cover in place.
4. Do not disassemble the jar or bowl from the jar base or bowl base.
5. This appliance can be used by children aged from 8 years and above and persons with reduced physical, sensory or mental capabilities or lack of experience and knowledge if they have been given supervision or instruction concerning use of the appliance in a safe way and understand the hazards involved.
6. Children must not play with the appliance. Cleaning and user maintenance shall not be made by children without supervision.
7. Set the speed selector to the highest speed (Speed 2) when blending maximum level load or hard fruits and vegetables. If low speed is used, the motor may be damaged due to insufficient torque.

NOTE: Immediately increase speeds or turn the speed selector to "0" if blending speed is too slow.

IMPORTANT: Ensure blender is disconnected from the power supply before cleaning.

CLEANING & MAINTENANCE FOR BLENDER

1. The Auto Clean function can clean the blender easily and rapidly in complete safety.
2. Pour a little warm soapy water into the jar and turn the Speed Selector to position "1" and press down the Pulse button without releasing it for a few seconds.
3. Dismantle all detachable parts.

- Disassemble the jar from the motor unit and rinse it under running water.
- Detach the blade assembly from the jar assembly, remove blades & jar base seal ring *(please refer to Fig. 4)*.
- Rinse the jar, blade, jar base and jar cover under running water.

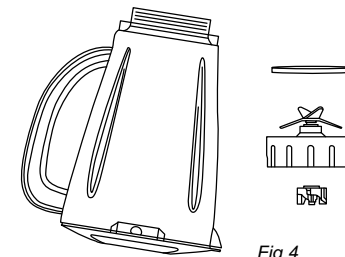


Fig.4

4. Wipe the outer surface of motor unit and with a damp cloth.

NOTE: Do not use abrasive cleansers and never immerse motor unit in water or other liquids.

5. Dry all parts before assembling them opposite of its disassembling sequence.

NOTE: Never disassemble the motor unit yourself. There are no user serviceable parts inside. Only contact the authorized service facility for examination and repair.

CLEANING & MAINTENANCE FOR GRINDER

1. Detach the bowl base from the grinding blade assembly.

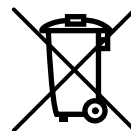
NOTE: While detaching, only grasp the unsharpened part of grinding blade or wear gloves to protect hands from cuts or other injuries.

2. Immerse blade, bowl base and grinding bowl into warm soapy water for cleaning, and then rinse them under running water.
3. Wipe the outer surface with damp cloth.

NOTE: Never immerse the motor unit into water for cleaning.

4. Dry all parts thoroughly and assemble them in position.

CORRECT DISPOSAL OF THIS PRODUCT



This marking shown on the product or its literature indicates that it should not be disposed with other household wastes at the end of its working life. In order to prevent any possible harm to the environment or human health from the uncontrolled waste disposal, please separate this from other types of wastes and recycle it responsibly to promote the sustainable reuse of material resources.

Household users should contact either the retailer where purchasing this product from or their local government office for details of where and how they can take this item for environmentally safe recycling.

Business users should contact their supplier and check the terms and conditions of the purchase contract. This product should not be mixed with other commercial wastes for disposal.